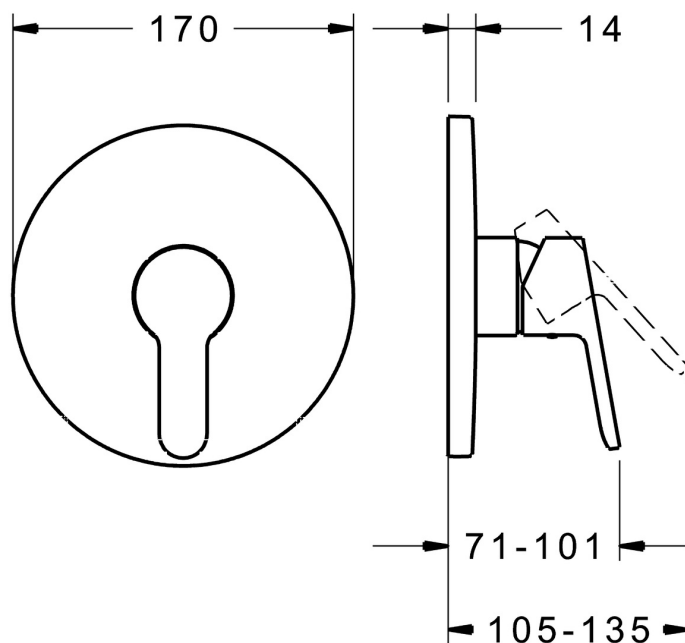
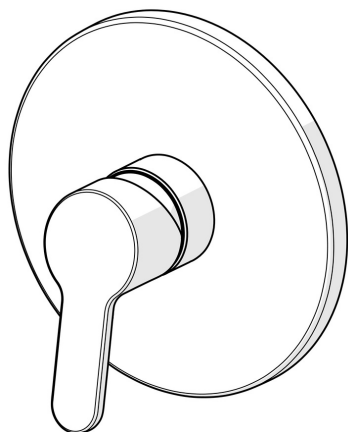


EAN: 4015474278691
static.hansa.com/89919003



- Shower solutions
- Single-lever, Trim Kit
- Concealed wall mounting
- Chrome
- Hot/Cold symbols, Single operating lever/handle
- Limitation option for maximum temperature and flow-rate, Adjustable hot water stop (included, retrofittable)
- ø 35 mm ceramic cartridge for flow and temperature control
- Inner body made of DZR brass
- Round rosette, Fastening of the function unit with screws, BLUECLICK for an easy, screwless trim plate installation



Technical data

Flow properties

Flow-rate at 3 bar

20.4 l/min

Technical properties

Hot water supply

max. +80°C

Working pressure

0.5-10 bar

Regulations

EN standard

EN 817

Noise class

I (ISO 3822)

Approvals and Declarations

DVGW

DW-6506CS0196

ABP

PA-IX 38160/IB

EPD

S-P-07752

Sustainability

EPD module A1 (kg CO2 eq.)

11,32

EPD module A2 (kg CO2 eq.)

0,36

EPD module A3 (kg CO2 eq.)

7,06

EPD module A1-A3 (kg CO2 eq.)

18,67

EPD module A4 (kg CO2 eq.)

0,31

EPD module B7 (kg CO2 eq.)

3937,20

EPD module C2 (kg CO2 eq.)

0,02

EPD module C3 (kg CO2 eq.)

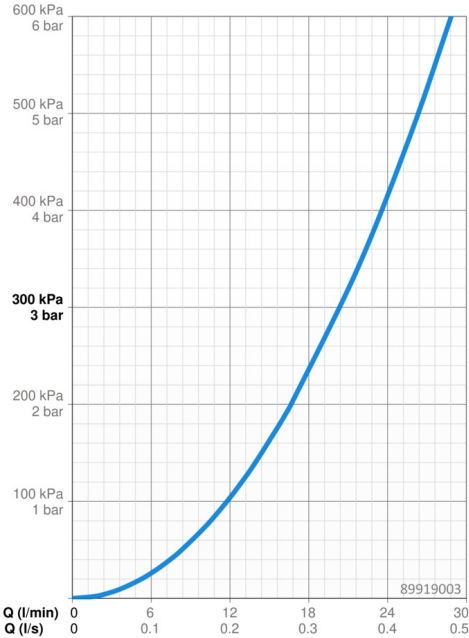
0,02

EPD module C4 (kg CO2 eq.)

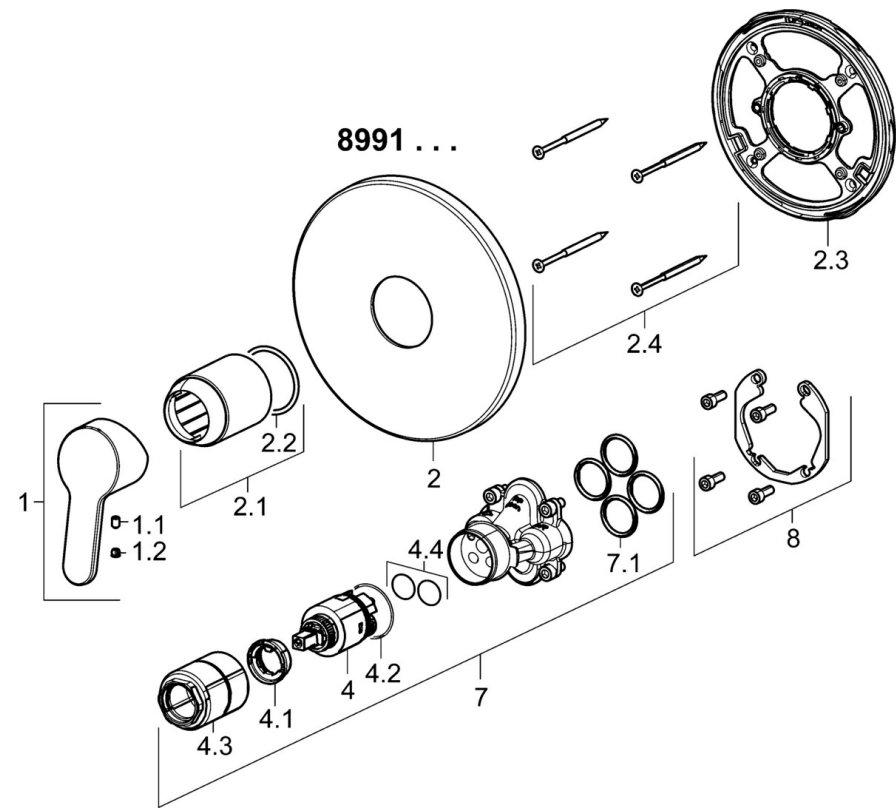
0,24

EPD module D (kg CO2 eq.)

-5,78



Spare parts



SP89919003

| | Name | Code |
|------|-----------------------------------|----------|
| 1 | Lever | 59913827 |
| 1.1 | Screw, M5x8, SW2.5 | 59904755 |
| 1.2 | Symbol plug Grey | 59912112 |
| 2 | Cover flange, d 170 mm | 59914310 |
| 2.1 | Cover sleeve | 59912511 |
| 2.2 | O-ring, 41x3 | 59913215 |
| 2.3 | Fixing part | 59914296 |
| 2.4 | Screw, M4.5x80 | 59912890 |
| 4 | Cartridge, 3.5 Classic | 59913075 |
| 4.1 | Temperature adjustment limiter | 59912325 |
| 4.2 | O-ring, d 28.24x2.62 Discontinued | 59912590 |
| 4.3 | Screw sleeve, M38x1 | 59912115 |
| 4.4 | O-ring, d 10.10x1.60 Discontinued | 59905072 |
| 7 | Functional unit, 3.5 | 59914303 |
| 7.1 | O-ring, 23.47x2.62 | 59914304 |
| 8 | Installation kit | 59914186 |
| N.I. | Fixing screw, M6x13 | 59914657 |
| N.I. | Adapter, H/C reversed | 59914184 |
| N.I. | Raising kit, 15 mm | 59914182 |
| N.I. | Raising kit, 15 mm, d 170 mm | 59914191 |