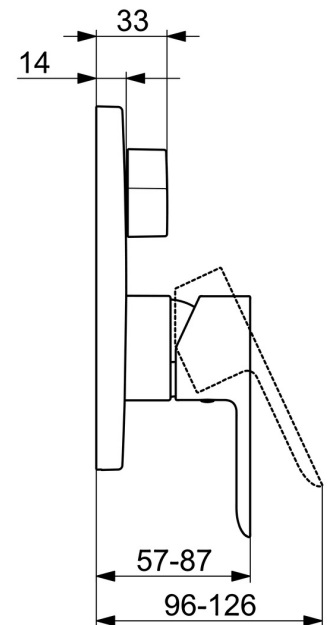
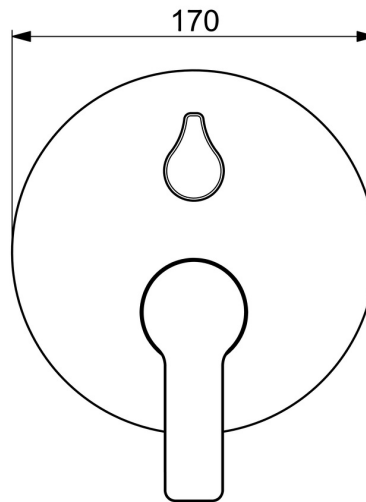
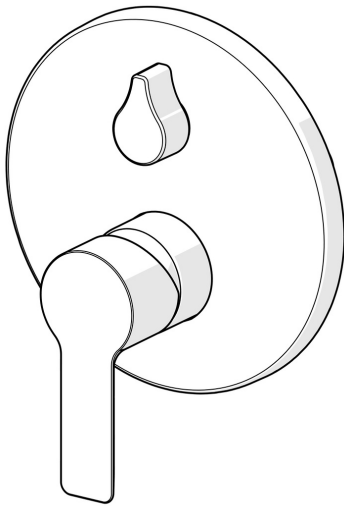


EAN: 4015474279421  
[static.hansa.com/83859503](https://static.hansa.com/83859503)



- Bathtub & Shower
- Single-lever, Trim Kit
- Concealed wall mounting
- Chrome
- Single operating lever/handle, Hot/Cold symbols
- Turn operated diverter
- Limitation option for maximum temperature and flow-rate, Adjustable hot water stop (included, retrofittable)
- $\varnothing$  35 mm ceramic cartridge for flow and temperature control
- Inner body made of DZR brass
- Round rosette, Fastening of the function unit with screws, BLUECLICK for an easy, screwless trim plate installation, BLUETUNE alignment after installation of +/- 3,5°



Technical data

Flow properties

Flow-rate at 3 bar

21.0 / 21.0 l/min

Technical properties

Hot water supply

max. +80°C

Working pressure

0.5-10 bar

Regulations

EN standard

EN 817

Noise class

I (ISO 3822)

Approvals and Declarations

DVGW

DW-6506CS0196

ABP

PA-IX 38161/IDC

EPD

S-P-07752

Sustainability

EPD module A1 (kg CO2 eq.)

14,18

EPD module A2 (kg CO2 eq.)

0,45

EPD module A3 (kg CO2 eq.)

8,85

EPD module A1-A3 (kg CO2 eq.)

23,39

EPD module A4 (kg CO2 eq.)

0,39

EPD module B7 (kg CO2 eq.)

4053,00

EPD module C2 (kg CO2 eq.)

0,02

EPD module C3 (kg CO2 eq.)

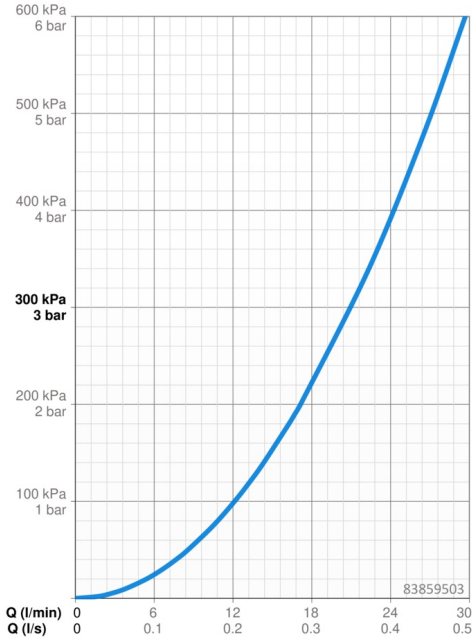
0,02

EPD module C4 (kg CO2 eq.)

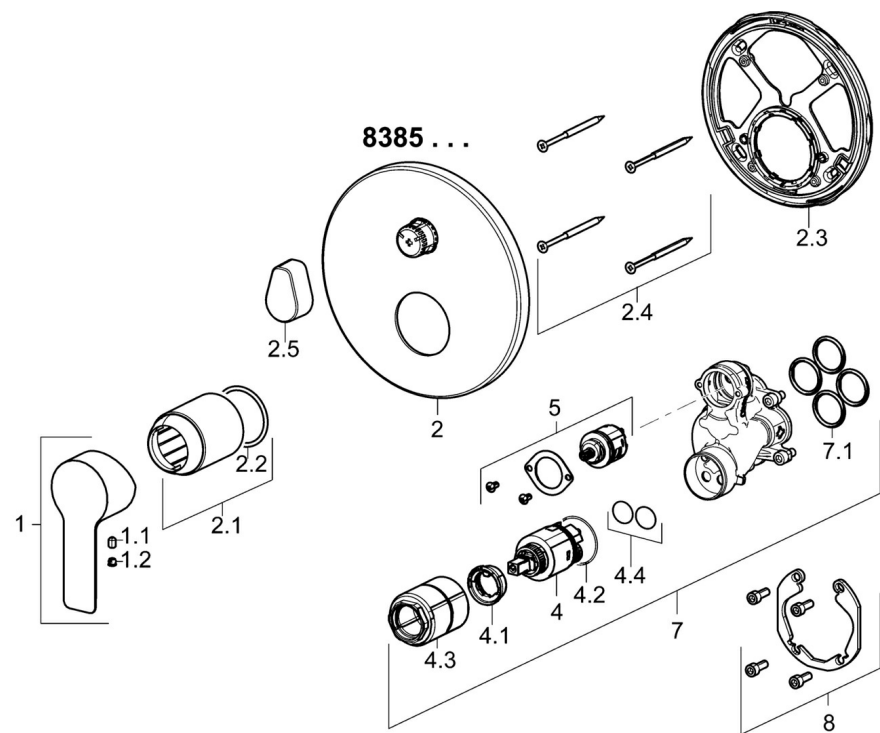
0,31

EPD module D (kg CO2 eq.)

-7,24



Spare parts



SP83859503

	Name	Code
1	Lever	59913650
1.1	Screw, M5x8, SW2.5	59904755
1.2	Cover plug	59913762
2	Cover flange, d 170 mm	59914308
2.1	Cover sleeve	59912511
2.2	O-ring, 41x3	59913215
2.3	Fixing part	59914307
2.4	Screw, M4.5x80	59912890
2.5	Handle	59914576
4	Cartridge, 3.5 Classic	59913075
4.1	Temperature adjustment limiter	59912325
4.2	O-ring, d 28.24x2.62 Discontinued	59912590
4.3	Screw sleeve, M38x1	59912115
4.4	O-ring, d 10.10x1.60 Discontinued	59905072
5	Diverter	59914183
7	Functional unit, 3.5	59914299
7.1	O-ring, 23.47x2.62	59914304
8	Installation kit	59914186
N.I.	Screwdriver, 5 mm	59914334
N.I.	Raising kit, 15 mm, d 170 mm	59914191
N.I.	Adapter, H/C reversed	59914184
N.I.	Raising kit, 15 mm	59914182
N.I.	Diverter, 120°	59914655
N.I.	Fixing screw, M6x13	59914657