

EAN: 4057304008566  
[static.hansa.com/80919001](http://static.hansa.com/80919001)



- Public
- Trim Kit, Thermostatic, Tiptronic, External transformer
- Concealed wall mounting
- Chrome
- Temperature control handle
- Mechanical push button
- Limitation option for maximum temperature and flow-rate, Safety stop against scalding at 38°C
- Thermostatic cartridge for automatic temperature control, Non-return valve(s)
- Solenoid valve, External control unit, Light indicated function(s)
- Software settings adjustable via buttons
- Roundwallrosette, BLUECLICK
- WithoutTransformer
- This item is also available with special programming. For example the duration of possible showering can be preset. For more information please contact our office.

## Technical data

### Flow properties

Flow-rate at 3 bar **13.8 l/min**

### Technical properties

Hot water supply **max. +70°C**  
 Working pressure **1-10 bar**

### Software settings

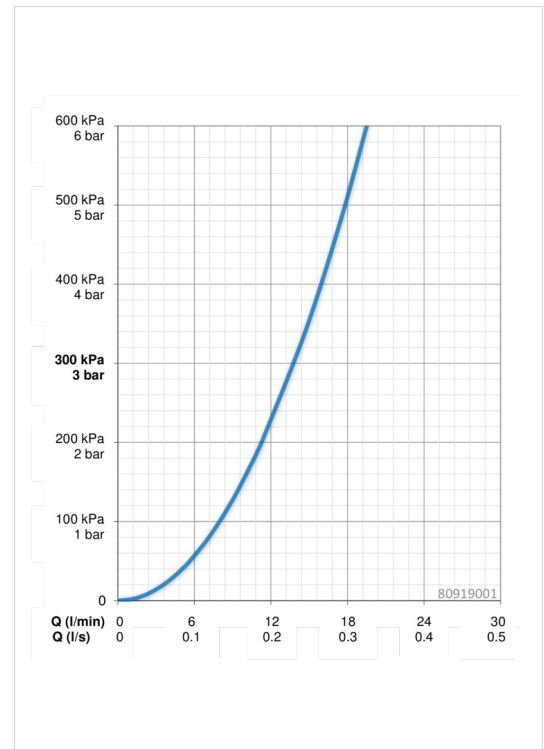
Automatic flush **off (off/6/12/18/24/30/36/48/60/72 h)**  
 Automatic flush period **30 s (30/60/90/120/180/240/300/360/480/600 s)**  
 Max. flow period **45 s (15/30/45/60/75/90/105/120/135/150 s)**

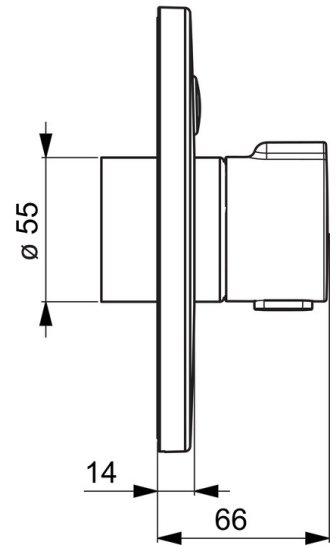
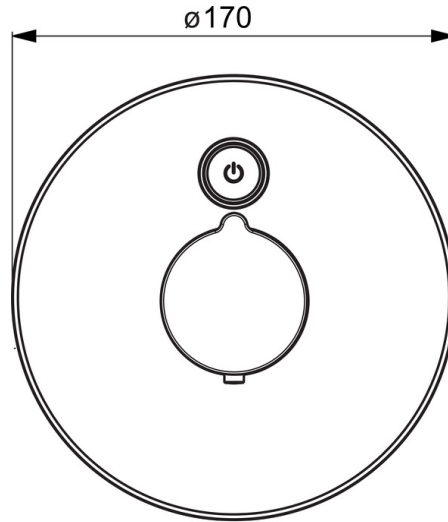
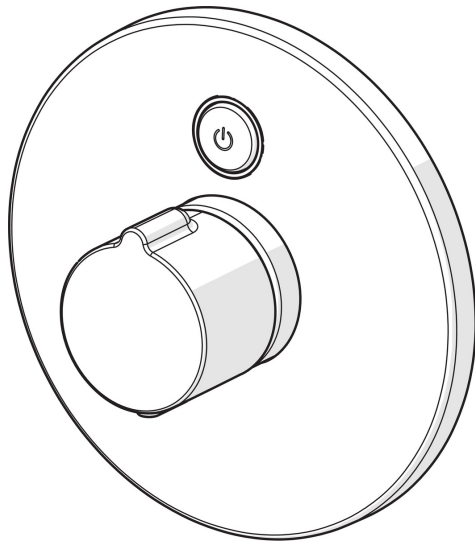
### Electronic properties

Electrical Connection **12 VDC**

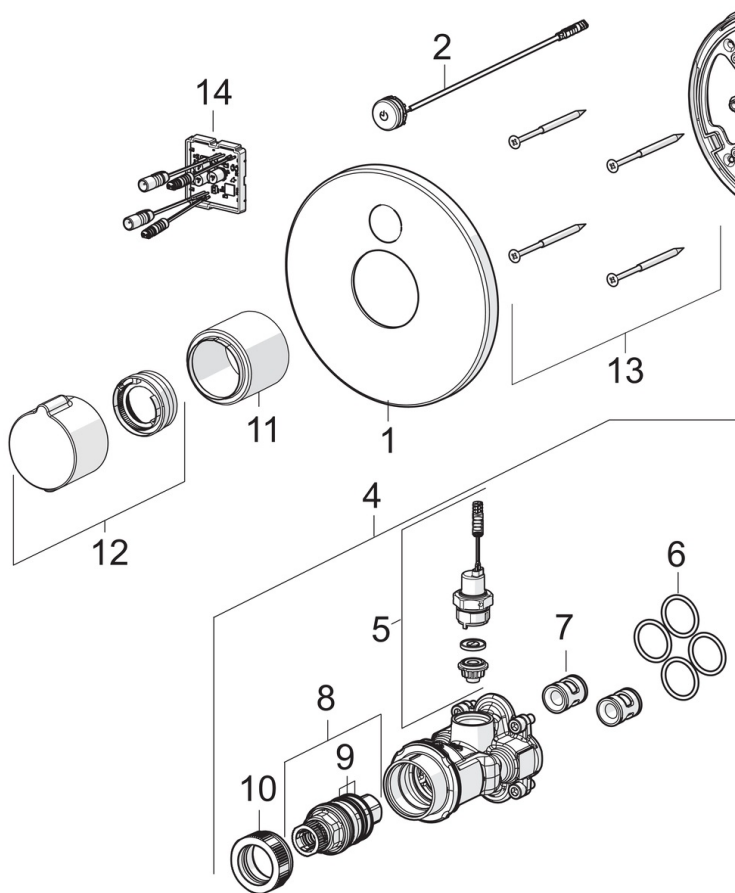
### Regulations

EMC Directive **C E 2014/30/EU**  
 EN standard **EN 15091, EN 1111**  
 Protection class **IP 55**





## Spare parts



### SP80919001

|    | Name                          | Code     |
|----|-------------------------------|----------|
| 01 | Cover plate, d 170 mm         | 59914556 |
| 02 | Push button                   | 59914557 |
| 03 | Fixing part                   | 59914296 |
| 04 | Functional unit               | 59914558 |
| 05 | Solenoid valve complete, 3 V  | 59914125 |
| 06 | O-ring, 23.47x2.62            | 59914304 |
| 07 | Non-return valve              | 59905714 |
| 08 | Thermostatic cartridge, 3.4   | 59914114 |
| 09 | O-ring kit                    | 59914113 |
| 10 | Tightening nut, M36x1.5, SW38 | 59914319 |
| 11 | Cover sleeve                  | 59914294 |
| 12 | Temperature control handle    | 59914320 |
| 13 | Screw, M4,5x80                | 59912890 |
| 14 | Control unit, 12 V            | 59914560 |