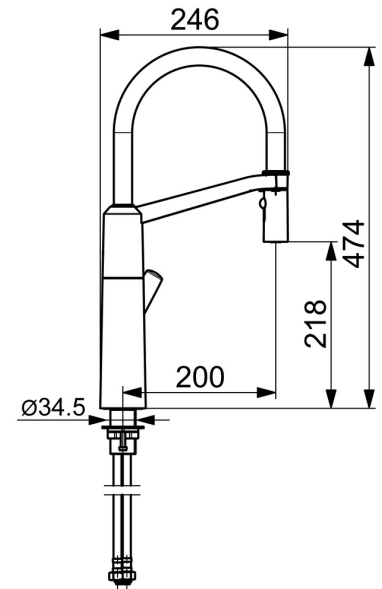
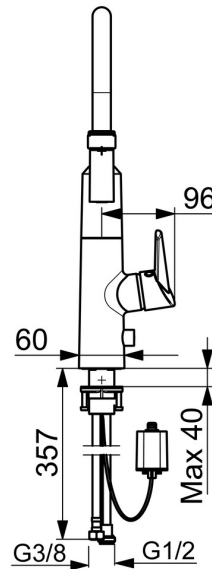
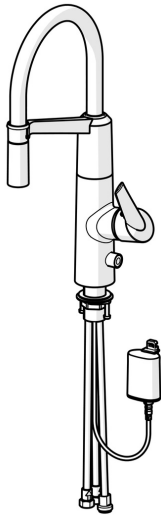


EAN: 4057304004605
static.hansa.com/65292203



- Kitchen
- Single-lever, side operated, Battery-operated, Dishwasher valve
- Deck mounted
- Chrome
- Swivel spout
- Electronic stop valve for external equipment
- Easy-Grip surface, Single operating lever/handle, Hot/Cold symbols
- Push operated diverter, Automatic reset
- Normal - Even and soft water stream, Intense - invigorating water stream
- Pull-out hand spray
- Adjustable hot water stop (included, retrofittable), Limitation option for maximum temperature and flow-rate
- Litter filter(s), Mixing valve for manual temperature control, \varnothing 40 mm ceramic cartridge for flow and temperature control
- Solenoid valve, Light indicated function(s), Low battery indicator
- Flexible inlet pipes
- Surfaces in contact with drinking water contain less than 0.3% lead, Waterways without nickel coating
- 2 spray functions



Technical data

Flow properties

Flow-rate at 3 bar

12.0 l/min

Technical properties

DN-size (nominal dimension)

DN15

Hot water supply

max. +70°C

Working pressure

1-10 bar

Connection size

G3/8

Projection

200 mm

Backflow prevention (EN1717)

EB

Material

Brass/Plastic

Software settings

Dishwasher valve open period

4 h / 12 h

Electronic properties

Battery

Lithium 2CR5 6 V

Regulations

EU Directives

C € EMC Directive 2014/30/EU , RoHS Directive 2011/65/EU

EN standard

EN 15091 , EN 817, ETSI EN 301 489-1 V1.9.2 , ETSI EN 300 328 v2.2.2 , EN 61000-6-1:2007 , EN 61000-6-3:2007+A1:2011+AC:2012 , EN 60335-1:2012+A11+A13+A14+A14+A2+A15:2021, Part 19.11.4

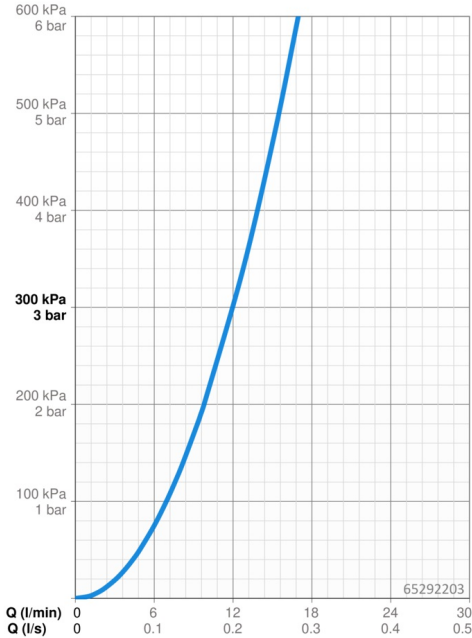
Protection class

IP 55

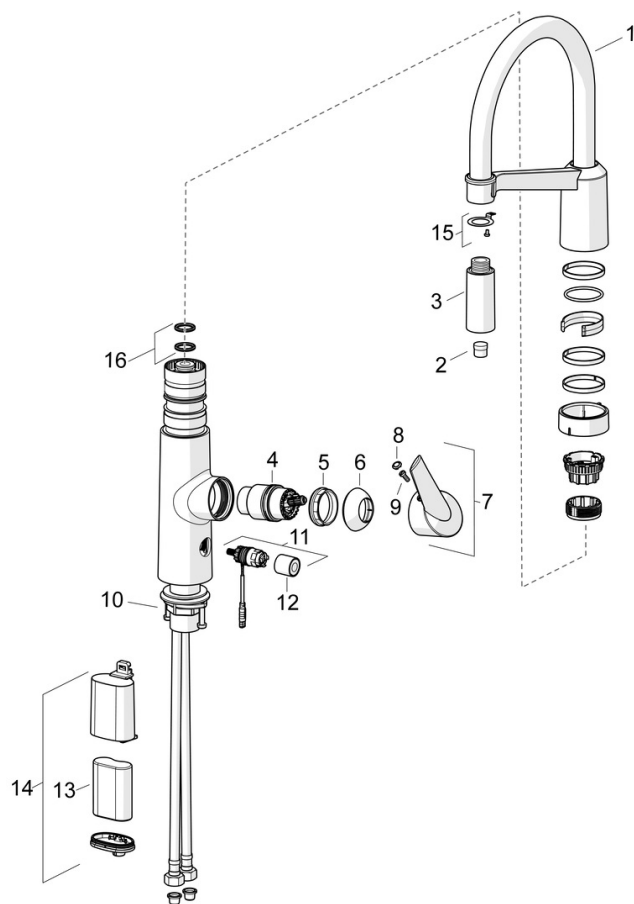
Approvals and Declarations

UN38.3

UN38-3 Maxell 2CR5



Spare parts



SP65292203

	Name	Code
01	High spout	59914582
02	Aerator	59914583
03	Shower head	59914584
04	Cartridge, 4.0 Classic	59914129
05	Tightening nut, M42x1.5, SW 38	59914128
06	Covering cap Discontinued	59914127
07	Lever Discontinued	59914124
08	Symbol plug	59914513
09	Screw set, M4x10	59914586
10	Fixing set	59913371
11	Solenoid valve Discontinued	59914587
12	Cap Discontinued	59914588
13	Battery, 2CR5 6 V	59911670
14	Battery casing, 2CR5 6 V	59914088
15	Fixing part	59914615
16	Sealing kit	59914144