

EAN: 4057304020544
static.hansa.com/6515920180



Designed to impress and give an elegant solution for any bathroom.

This rainshower system gives you a most comfortable and enjoyable shower experience every day. With focus on high performance while still have an eye on the aesthetics and details to secure an easy installation.

The handles are designed to be elegant while still providing a good grip for easy.

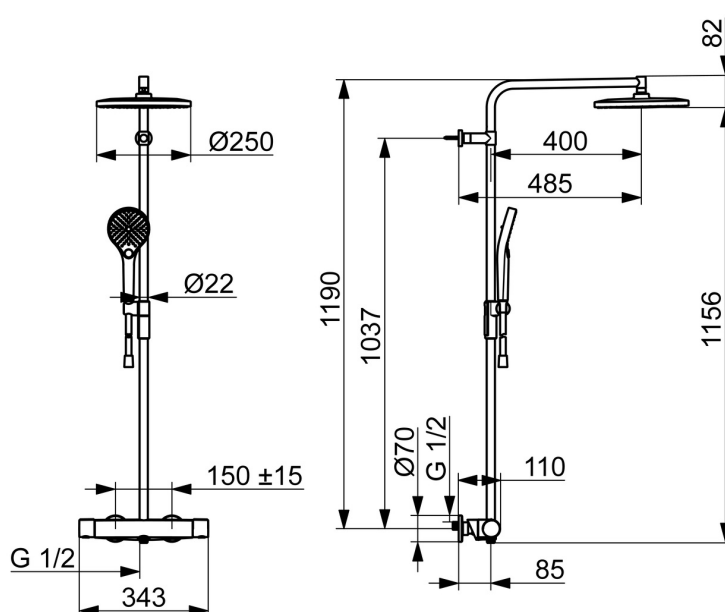
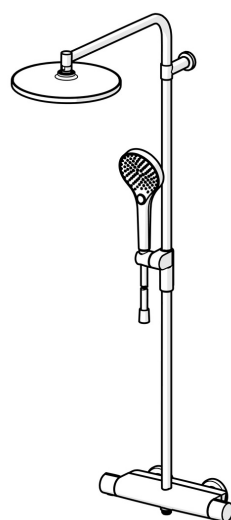
Our new developed magnetic shelf "MagShelf" completes the design while covering the connection to the wall.

The large and flat head shower has a gentle spray that covers the whole body. Enjoy the even and strong water stream for the ultimate relaxation.

Our 3-spray handshower is easy to operate with a nice designed push button to easily change the water sprays.

Elegant design and total enjoyment

- Shower solutions
- Thermostatic
- Wall mounted
- Brushed steel
- Temperature control handle, Flow control handle, Hot/Cold symbols, Easy-Grip surface, Eco feature for water flow
- Turn operated diverter, Integrated into flow control handle
- Rotatable ball joint connection, Hand shower, Lockable in the middle position, MagShelf. Removable shelf with magnetic attachment, Adjustable shower rail bracket, Swivel overhead shower, Shower hose (1750 mm), Shower rail, Anti limescale technology (easy to clean), Twist guard for shower hose, Variable fixing points
- Normal - Even and soft water stream, Massage - Strong water stream due to rotatable spray nozzles, Rain - Even and strong water stream
- Safety stop against scalding at 38°C, The housing of the fittings conducts minimal heat
- Ceramic head part for flow control, Thermostatic cartridge for automatic temperature control, Non-return valve(s), Litter filter(s)
- Eccentric coupling(s), Cover plate(s), Silencer(s)
- Flexible length / can be shortened, Anti-twist hose connector
- 3 spray functions



Technical data

Flow properties

| | |
|-----------------------------------|-----------------|
| Eco-flow at 3 bar | 7.2 l/min |
| Flow-rate at 3 bar | 12.0/12.0 l/min |
| Pressure loss with flow (0.2 l/s) | 2.5 bar |

Technical properties

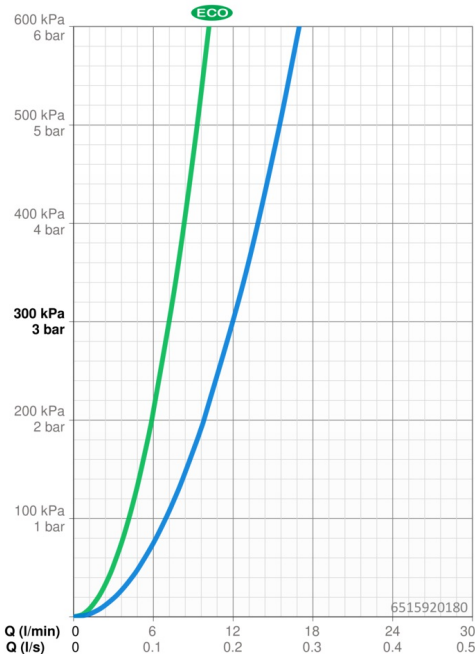
| | |
|------------------------------|---------------|
| Hot water supply | max. +80°C |
| Working pressure | 1-10 bar |
| Connection size | G3/4 |
| Installation width | CC150± 15 mm |
| Backflow prevention (EN1717) | EB |
| Material | Brass/Plastic |

Regulations

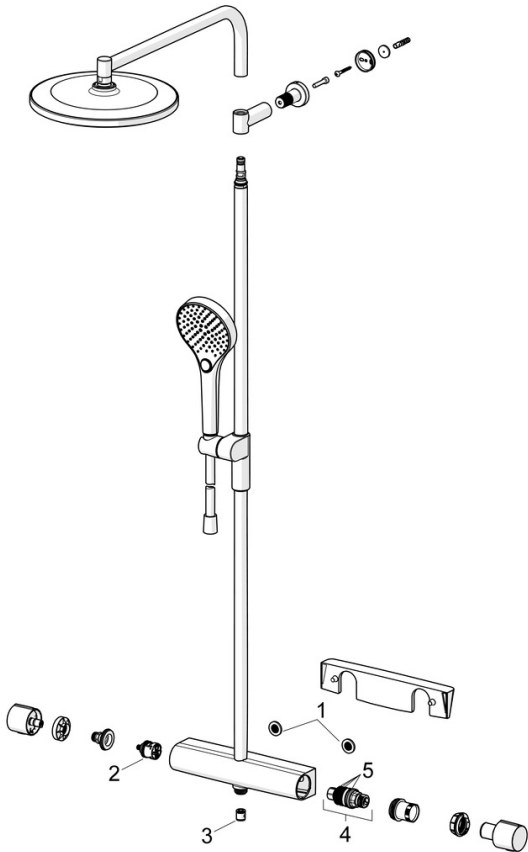
| | |
|-------------|--------------|
| EN standard | EN1111 |
| Noise class | I (ISO 3822) |

Approvals and Declarations

| | |
|---------------------------|-----|
| Declaration of conformity | DoC |
|---------------------------|-----|



Spare parts



SP65159201CLR

| | Name | Code |
|----|-----------------------------|----------|
| 01 | Filter sealing, G3/4 | 59911076 |
| 02 | Diverter | 59914183 |
| 03 | Non-return valve, DN15 | 59914250 |
| 04 | Thermostatic cartridge, 3.4 | 59914114 |
| 05 | O-ring kit | 59914113 |