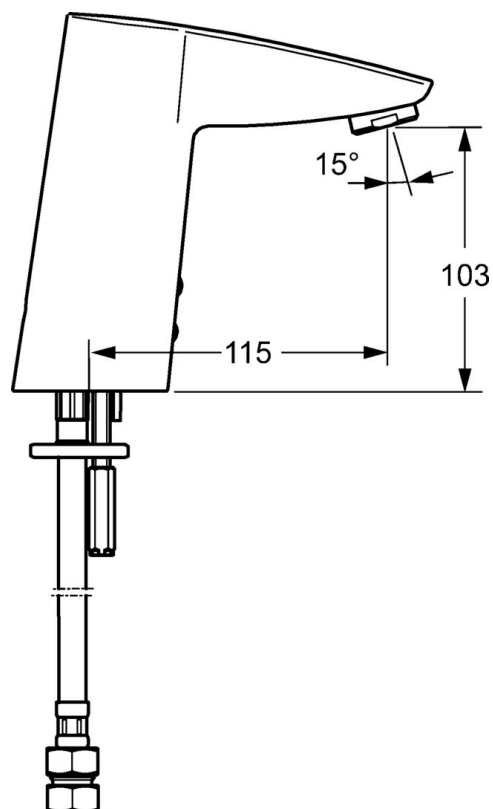
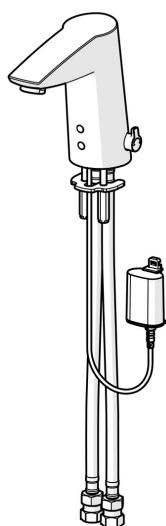


EAN: 4015474277144
static.hansa.com/64912211



- Public & Semi-public
- Battery-operated, Touchless
- Deck mounted
- Chrome
- Fixed spout, Casted construction
- Standard aerator
- Temperature control handle
- Adjustable hot water stop (included, retrofittable)
- Mixing valve for manual temperature control, Non-return valve(s), Litter filter(s)
- Autofocus infrared sensor, Solenoid valve, Low battery indicator
- Flexible inlet pipes
- Without pop-up waste, Without draw-rod opening



Technical data

Flow properties

Flow-rate at 3 bar (with flow controller)

6.0 l/min

Technical properties

DN-size (nominal dimension)

DN15

Hot water supply

max. +70°C

Working pressure

1-10 bar

Connection size

G3/8

Projection

115 mm

Backflow prevention (EN1717)

EB

Material

Brass

Software settings

Afterflow period

2 s ± 1 s

Automatic flush

72 h

Automatic flush period

30 s

Max. flow period

2 min

Electronic properties

Battery

Lithium 2CR5 6 V

Regulations

EU Directives

C € EMC Directive 2014/30/EU , RoHS Directive 2011/65/EU

EN standard

EN 15091, ETSI EN 301 489-1 V1.9.2 , ETSI EN 300 328 v2.2.2 , EN 61000-6-1:2007 , EN 61000-6-3:2007+A1:2011+AC:2012 , EN 60335-1:2012+A11+A13+A1+A14+A2+A15:2021, Part 19.11.4

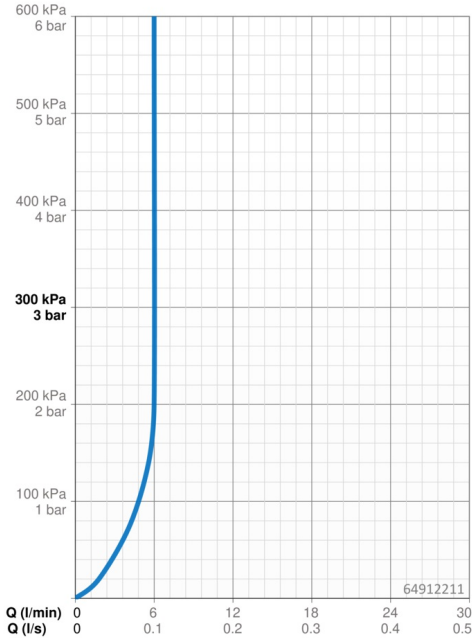
Protection class

IP 55

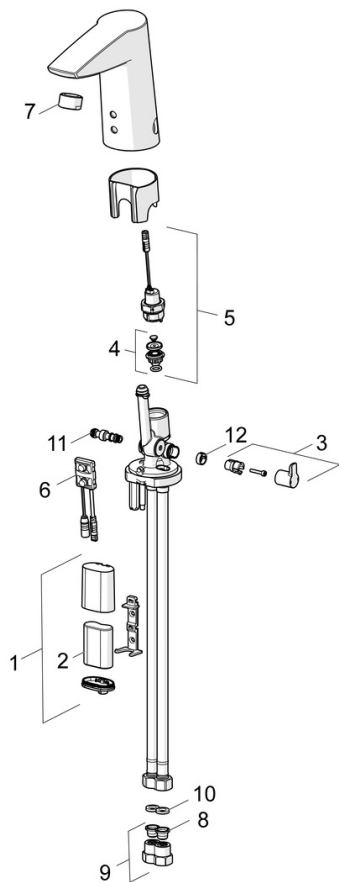
Approvals and Declarations

UN38.3

BP 0001-3



Spare parts



SP64912210

	Name	Code
01	Battery casing, 2CR5 6 V	59914088
02	Battery, 2CR5 6 V	59911670
03	Temperature control handle	59914108
04	Membrane for solenoid valve	1006500V
04	Membrane support ring Discontinued	59914090
05	Solenoid valve, 6 V	59914091
06	Sensor, 6 V Discontinued	59914093
06	Sensor, 6/9/12 V, Bluetooth	59914567
07	Aerator, M24x1, 6 l/min	59913727
08	Litter filters	59914085
09	One-way valve with litter screen	59914086
10	Gasket, 8x14.3x2	59914087
11	Temperature regulator	59914089
12	Cover plug	59914109
N.I.	Flexible pipe, L=375, G3/8-M10x1 (2pcs)	59914095
N.I.	Limiter	59914106