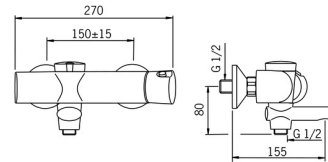
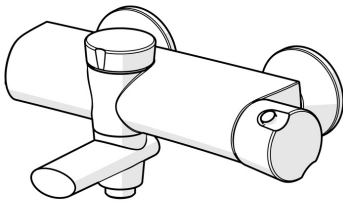


EAN: 4015474277267
static.hansa.com/64632101



- Bathtub & Shower
- Tiptronic, Battery-operated, Thermostatic
- Wall mounted
- Chrome
- Temperature control handle, Flow control handle, Eco feature for water flow, Safety feature for water temperature
- Integrated into spout
- Press pad with EcoLed
- Safety stop against scalding at 38°C
- Thermostatic cartridge for automatic temperature control, Non-return valve(s), Litter filter(s)
- Eccentric coupling(s)
- Filling time: 10 min (0 - 15 min)



Technical data

Flow properties

Flow-rate at 3 bar

20.4 / 19.2 l/min

Technical properties

DN-size (nominal dimension)

DN15

Hot water supply

max. +70°C

Working pressure

1-10 bar

Connection size

G1/2

Installation width

cc150 ± 15 mm

Projection

155 mm

Backflow prevention (EN1717)

EB

Material

Brass

Software settings

Max. flow period

4 min

Electronic properties

Battery

AA 1.5 V Lithium x 2

Regulations

EU Directives

C € EMC Directive 2014/30/EU , RoHS Directive 2011/65/EU

EN standard

EN 1111 , EN 15091, ETSI EN 301 489-1 V1.9.2 , ETSI EN 300 328 v2.2.2 , EN 61000-6-1:2007 , EN 61000-6-3:2007+A1:2011+AC:2012 , EN 60335-1:2012+A11+A13+A14+A15:2021, Part 19.11.4

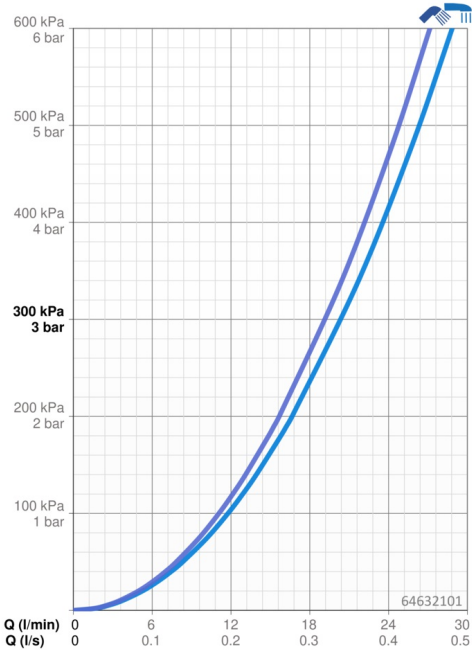
Protection class

IP 55

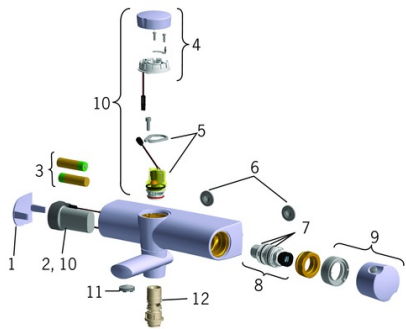
Approvals and Declarations

UN38.3

1118120077



Spare parts



SP64632101

	Name	Code
01	Cover plate Discontinued	59914241
02	Control unit, 3 V	59914399
03	Battery, 1.5 V AA Lithium	59914136
04	EcoLed press pad Discontinued	59914416
05	Solenoid valve	59914366
06	Filter sealing, G3/4	59911076
07	O-ring kit	59914113
08	Thermostatic cartridge, 3.4	59914114
09	Temperature control handle Discontinued	59914242
10	Update kit	59914243
11	Water star, M24x1 Discontinued	59914245
12	Supply pipe bushing Discontinued	59914244