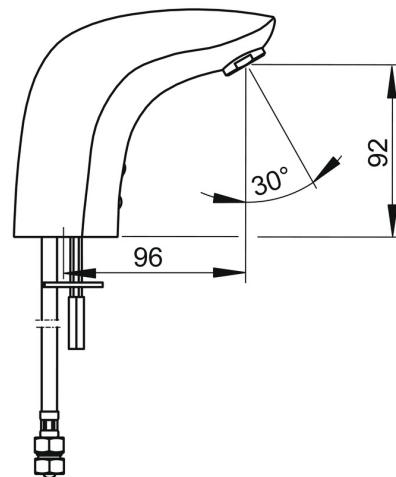
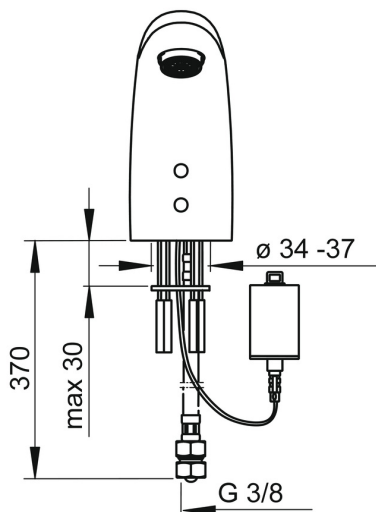
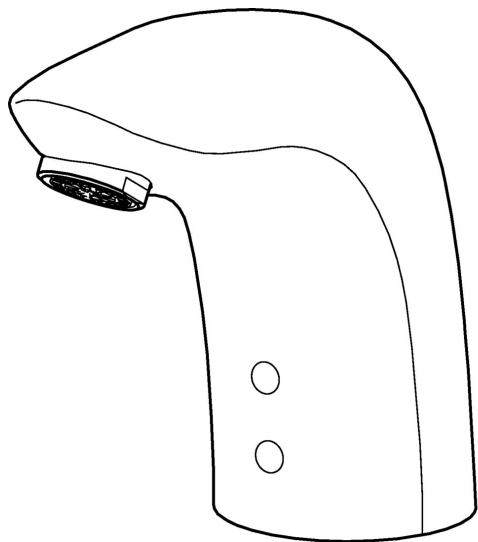


EAN: 4057304001079
static.hansa.com/64402211



- Public & Semi-public
- Battery-operated, Touchless
- Deck mounted
- Chrome
- Fixed spout
- Standard aerator
- Litter filter(s), Non-return valve(s)
- Autofocus infrared sensor, Solenoid valve, Low battery indicator
- One inlet for cold or premixed water
- Without pop-up waste, Without draw-rod opening



Technical data

Flow properties

Flow-rate at 3 bar (with flow controller)	6.0 l/min
---	-----------

Technical properties

DN-size (nominal dimension)	DN15
Hot water supply	max. +70°C
Working pressure	1-10 bar
Connection size	G3/8
Projection	96 mm
Backflow prevention (EN1717)	EB
Material	Brass

Software settings

Afterflow period	2 s ± 1 s
Automatic flush	72 h
Automatic flush period	30 s
Max. flow period	2 min

Electronic properties

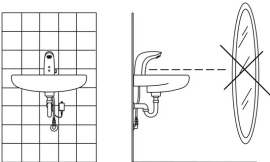
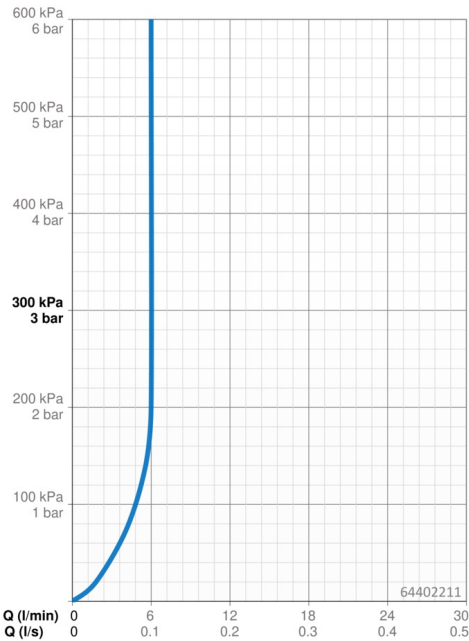
Battery	Lithium 2CR5 6 V
---------	------------------

Regulations

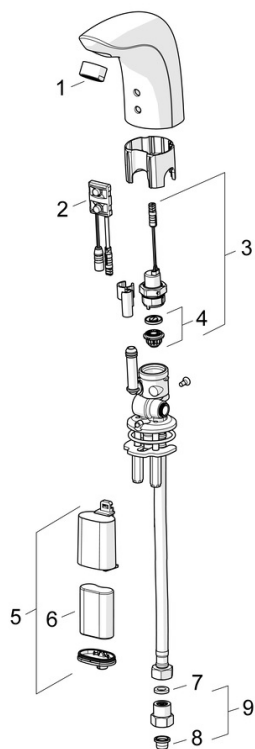
EU Directives	C € EMC Directive 2014/30/EU , RoHS Directive 2011/65/EU
EN standard	EN 15091, ETSI EN 301 489-1 V1.9.2 , ETSI EN 300 328 v2.2.2 , EN 61000-6-1:2007 , EN 61000-6-3:2007+A1:2011+AC:2012 , EN 60335-1:2012+A11+A13+A1+A14+A2+A15:2021, Part 19.11.4
Protection class	IP 55

Approvals and Declarations

UN38.3	UN38-3 Maxell 2CR5
--------	--------------------



Spare parts



SP64402210

	Name	Code
01	Aerator, M24x1, 6 l/min	59913727
02	Sensor, 6 V Discontinued	59914093
02	Sensor, 6 V /72h/2min Discontinued	59914286
02	Sensor, 6/9/12 V, Bluetooth	59914567
03	Solenoid valve, 6 V	59914091
04	Membrane for solenoid valve	1006500V
04	Membrane support ring Discontinued	59914090
05	Battery casing, 2CR5 6 V	59914088
06	Battery, 2CR5 6 V	59911670
07	Gasket, 8x14.3x2	59914087
08	Litter filters	59914085
09	One-way valve with litter screen	59914086