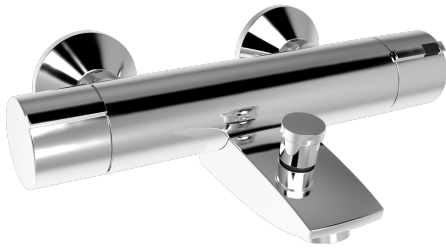
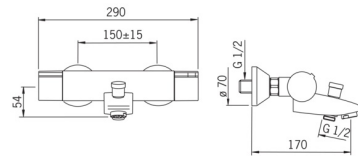
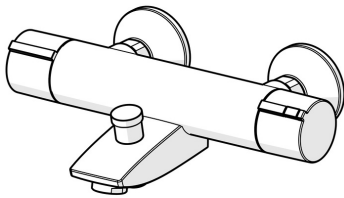


EAN: 4015474277281
static.hansa.com/64132101



- Bathtub & Shower
- Thermostatic
- Wall mounted
- Chrome
- Temperature control handle, Flow control handle, Safety feature for water temperature
- Pull operated diverter, Automatic reset
- Safety stop against scalding at 38°C
- Thermostatic cartridge for automatic temperature control, Litter filter(s), Ceramic head part for flow control
- Eccentric coupling(s)
- Inner body made of DZR brass
- protected against back-flow in domestic use (according to DIN EN 1717)



Technical data

Flow properties

Flow-rate at 3 bar

18.0 / 16.2 l/min

Technical properties

DN-size (nominal dimension)

DN15

Hot water supply

max. +80°C

Working pressure

1-10 bar

Installation width

cc150 ± 15 mm

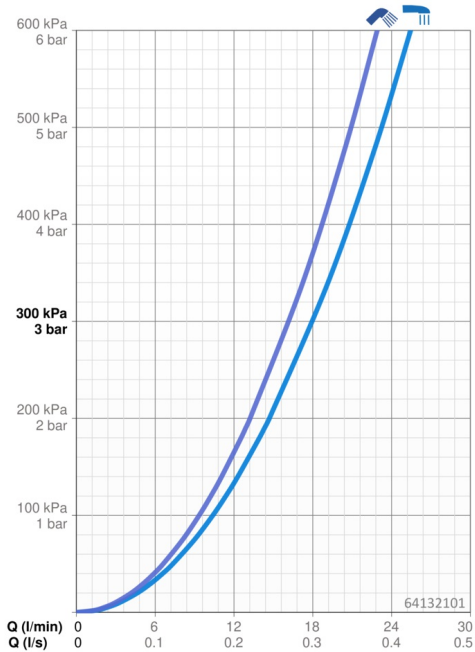
Projection

170 mm

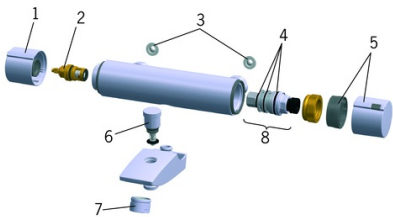
Regulations

EN standard

EN 1111



Spare parts



SP64132101

	Name	Code
1	Flow control handle	59914246
2	Headpart, G1/2	59914111
3	Filter sealing, G3/4	59911076
4	O-ring kit	59914113
5	Temperature control handle Discontinued	59914134
6	Diverter Discontinued	59914247
7	Aerator, M28x1 D	59907198
8	Thermostatic cartridge, 3.4	59914114
N.I.	Temperature adjustment limiter	59914426