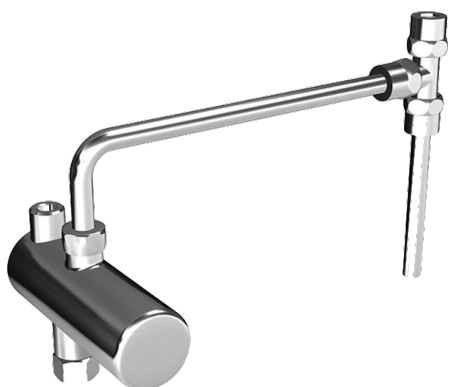
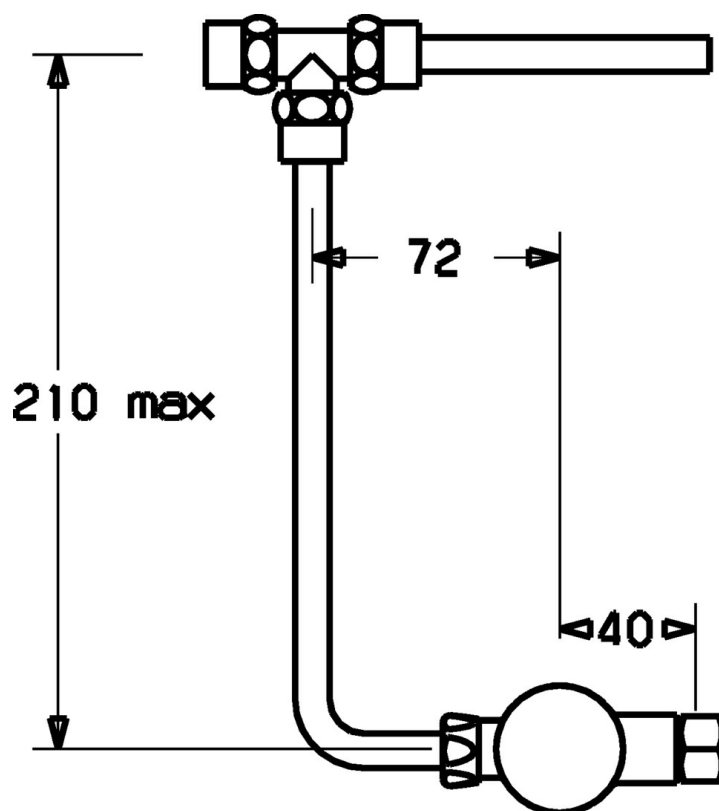
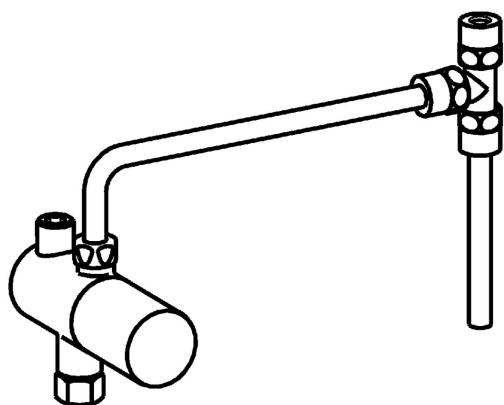


EAN: 4015474106260
static.hansa.com/63410100



- Public & Semi-public, Health & Care
- Chrome
- Non-return valve(s), Litter filter(s)
- Copper inlet pipes
- Thermal disinfection without cartridge readjustment
- T-piece



Technical data

Flow properties

Flow-rate at 3 bar

13.2 l/min

Technical properties

Hot water supply

max. +80°C

Working pressure

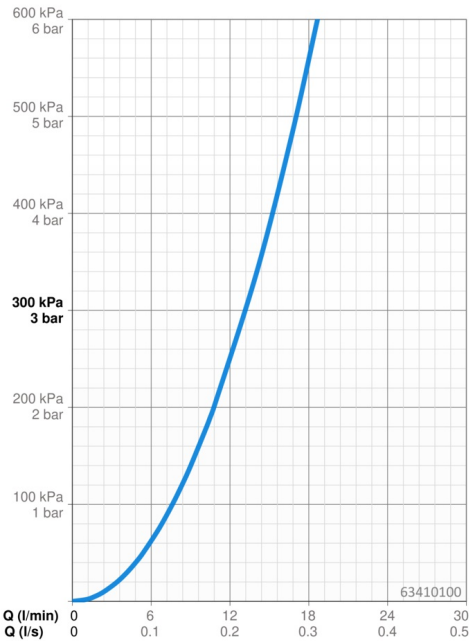
1-10 bar

Connection size

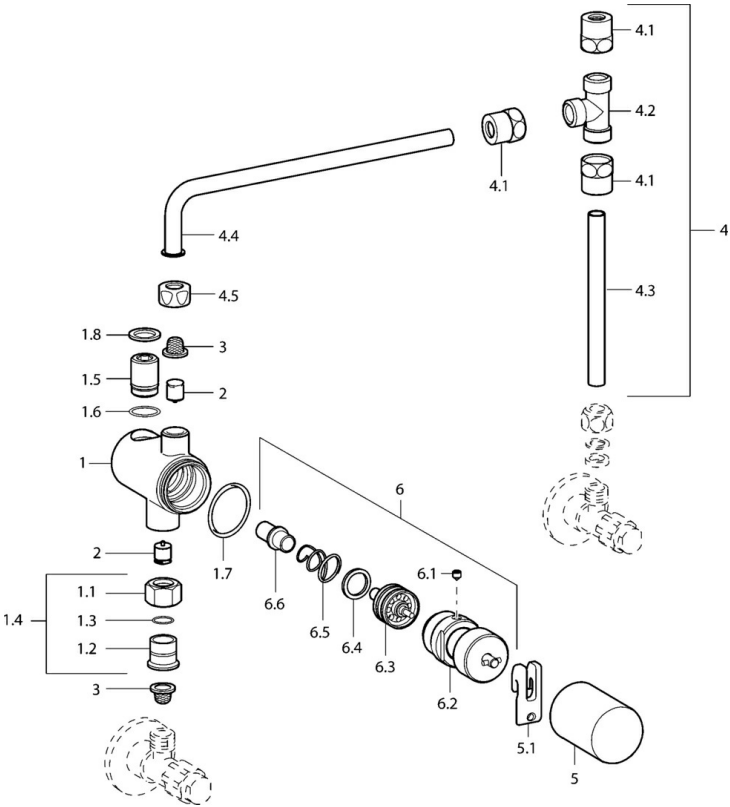
G3/8

Backflow prevention (EN1717)

EB



Spare parts



SP63410100

Name	Code
1.3 O-ring, d 10.10x1.60 Discontinued	59905072
1.4 Connection nipple, G3/8	59912848
1.7 O-ring, d 26.7x1.78 Discontinued	59912849
1.8 Sealing kit, 15x10x1	59902927
2 Non-return valve	59911674
3 Litter filter	59911684
4 Connection nipple, G3/8	59912850
4.1 Cramping connector	59905061
4.5 Cramping connector	59905061
5 Covering cap Discontinued	59912851
5.1 Lever	59912852
6 Thermostatic cartridge	59912847
6.1 Screw, M5x6, SW2.5	59912617
N.I. Rinsing part	59912853