

EAN: 4015474003927  
[static.hansa.com/58649105](https://static.hansa.com/58649105)



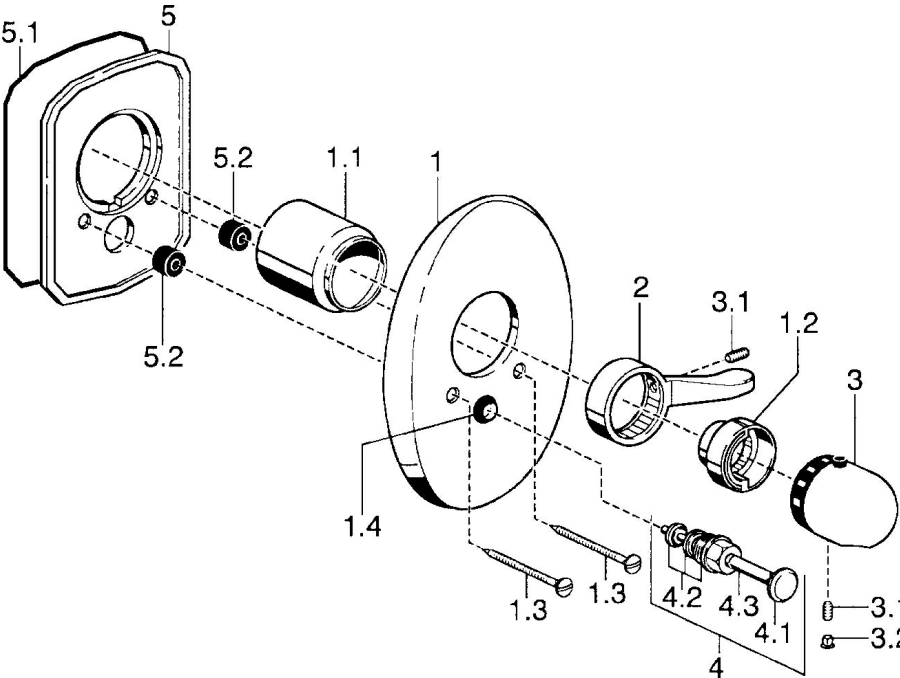
- Bathtub & Shower
- Trim Kit
- Concealed wall mounting
- Chrome
- Temperature control handle
- Pull operated diverter

Technical data

Technical properties

Hot water supply	max. +80°C
Working pressure	0.5-10 bar

Spare parts



SP58649105		
	Name	Code
1	Cover plate Discontinued	59911911
1.1	Covering cap Gold Discontinued	59911575
1.1	Covering cap	59911570
1.2	Temperature adjustment limiter	59906355
1.3	Screw, M5x65 Gold Discontinued	59904849
1.3	Screw, M5x65	59904847
1.4	Flow limiting cap	59904846
2	Lever	59905722
2	Lever Chrome/Satin Discontinued	59906135
3	Temperature control handle, (-38°)	59911280
3	Temperature control handle	59910304
3	Temperature control handle Chrome/Satin Discontinued	59910305
3.1	Screw, M6x9.5	59901609
3.2	Cover plug	59911840
3.2	Plug Chrome/Satin Discontinued	59911917
4	Diverter Gold Discontinued	59906392
4	Diverter	59911156
4	Diverter Chrome/Satin Discontinued	59910903
4.2	Sealing kit	59904791
4.3	O-ring, d 4x1	59902331
5	Fixing plate Discontinued	59911915
N.I.	Raising kit, 35 mm	59911438