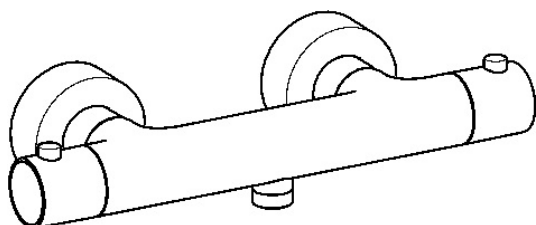


EAN: 4015474270299  
[static.hansa.com/58130901](https://static.hansa.com/58130901)

- Shower solutions
- Thermostatic
- Wall mounted
- Chrome
- Temperature control handle, Flow control handle
- Thermostatic cartridge for automatic temperature control, Non-return valve(s), Ceramic head part for flow control



## Technical data

### Technical properties

DN-size (nominal dimension)	<b>DN15</b>
Hot water supply	<b>max. +80°C</b>
Working pressure	<b>1-10 bar</b>
Backflow prevention (EN1717)	<b>EB</b>

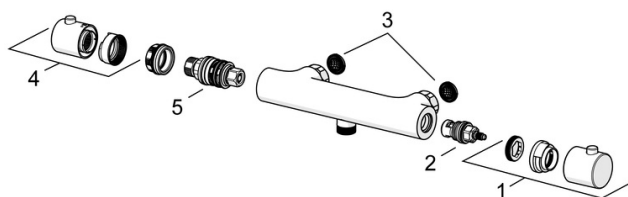
### Regulations

EN standard	<b>EN 1111</b>
-------------	----------------

## Spare parts

### SP58130101(2018)

	Name	Code
01	Flow control handle	59914208
02	Headpart, G1/2	59914207
03	Filter sealing, G3/4	59911076
04	Temperature control handle	602062V
05	Thermostatic cartridge, 3.4	59914114



### SP58130101

	Name	Code
01	Flow control handle	59913854
02	Headpart, G1/2, 180°	59911103
03	Filter sealing, G3/4	59911076
04	Temperature control handle	59913852
05	Thermostatic cartridge, 2.7	59913823

