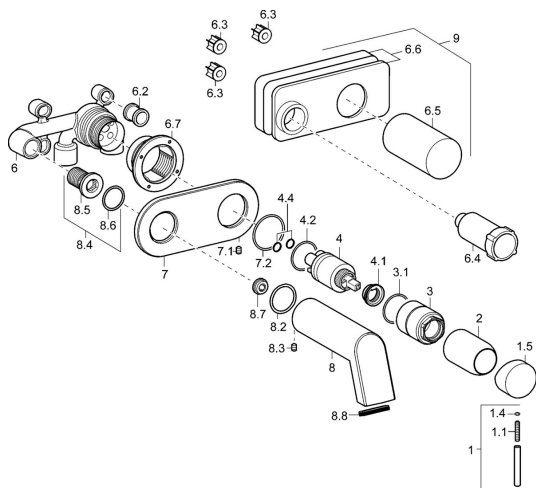


EAN: 4015474144026

static.hansa.com/57832101



- Bathtub & Shower
- Single-lever, Trim Kit
- Concealed wall mounting

- Chrome
- Single operating lever/handle, Hot/Cold symbols

Technical data

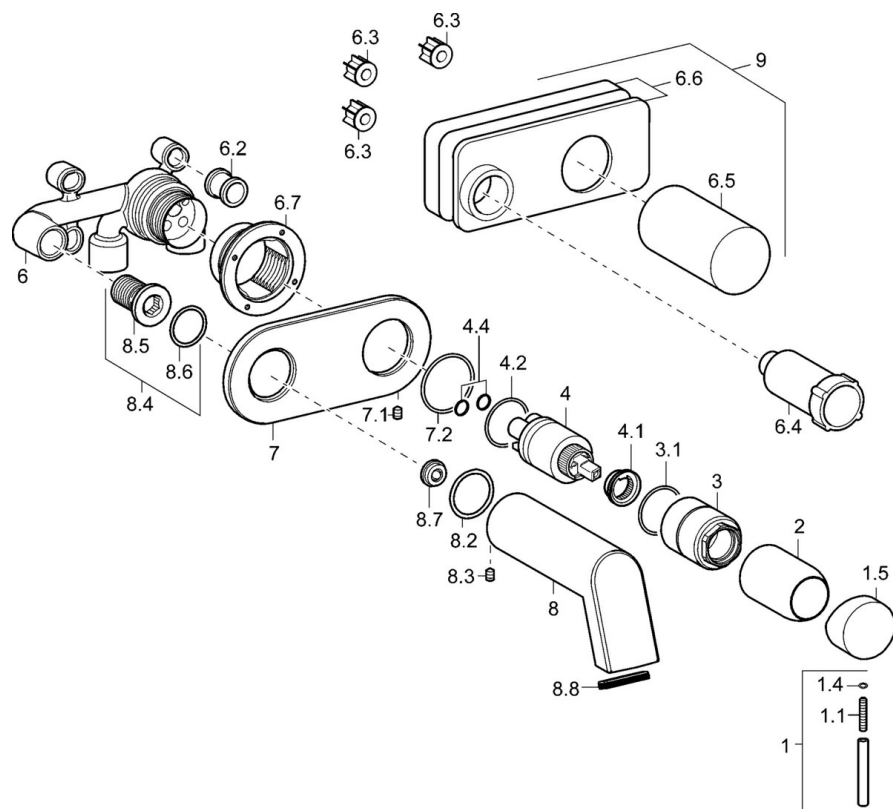
Technical properties

Hot water supply	max. +80°C
Working pressure	0.5-10 bar

Regulations

EN standard	EN 817
-------------	---------------

Spare parts



SP57832101

	Name	Code
1	Lever, 50 mm, d 7 mm	59913097
1.1	Screw, M5x25, SW 2,5	59913099
1.4	O-ring, d 3x1.5	59913100
1.5	Cap	59913098
2	Cover sleeve	59912116
3	Screw sleeve, M38x1	59912115
4	Cartridge, 3.5 Classic	59913075
4	Cartridge, 3.5 Eco	59912324
4.1	Temperature adjustment limiter	59912325
4.2	O-ring, d 28.24x2.62 Discontinued	59912590
4.4	O-ring, d 10.10x1.60 Discontinued	59905072
6.1	Gasket	59913169
6.2	Holder	59913171
6.3	Screw	59913172
6.4	Cover flange Discontinued	59913172
6.5	Cover flange Discontinued	59913172
6.6	Installation box	59913170
6.7	Cover flange Discontinued	59913172
7	Cover flange Discontinued	59913172
7.1	Screw, M4x4	59901027
7.2	O-ring, 42x2	59913173
8	Spout, L=160	59913174
8.1	O-ring, 34x2	59912533
8.2	O-ring, 34x2	59912533
8.3	Screw, M6x9	59911237
8.4	Connection nipple, G1/2	59911229
8.5	O-ring, d 25x2.5	59905053
8.6	O-ring, d 25x2.5	59905053
8.7	Flow limiter, 4L/min	59912951
8.8	Aerator	59913082
9	Installation box	59913170
N.I.	Raising kit, 20 mm	59913136
N.I.	Angle piece	59913086
N.I.	Key, SW30/34	59912108