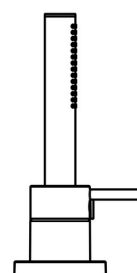
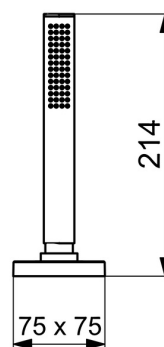
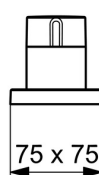
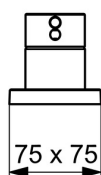
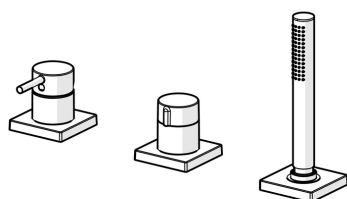


EAN: 4057304014611
static.hansa.com/57319412



- Vasca & doccia
- Set esterno, Monocomando
- Montaggio a bordo vasca
- Cromo
- Leva/Manopola monocomando, Leva con simbolo F+C, Leva pin
- Doccetta a mano, Flessibile doccia (1750 mm)
- Intenso - Getto d'acqua rinvigorente
- Cartuccia a dischi ceramici \varnothing 40mm, Valvola/e di non ritorno, Filtro/i anti-impurità
- Guida flessibile girevole
- 1 getto



Dati tecnici

Caratteristiche flusso

Portata 3 bar

13.2 l/min

Caratteristiche tecniche

Fornitura di acqua calda

max. +80°C

Pressione di esercizio

0.5-10 bar

Backflow prevention (EN1717)

EB

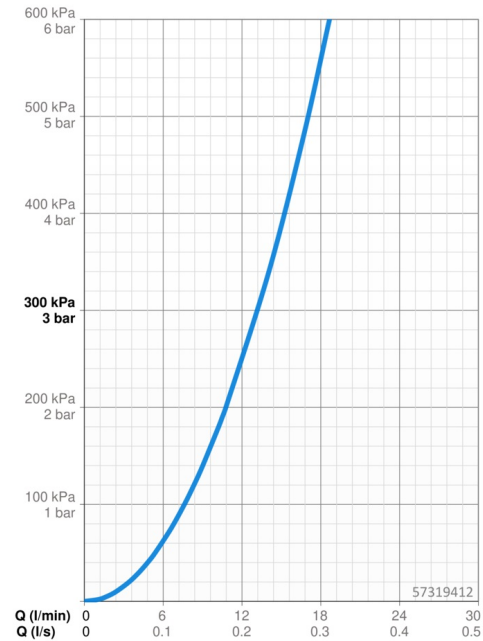
Materiale

Ottone

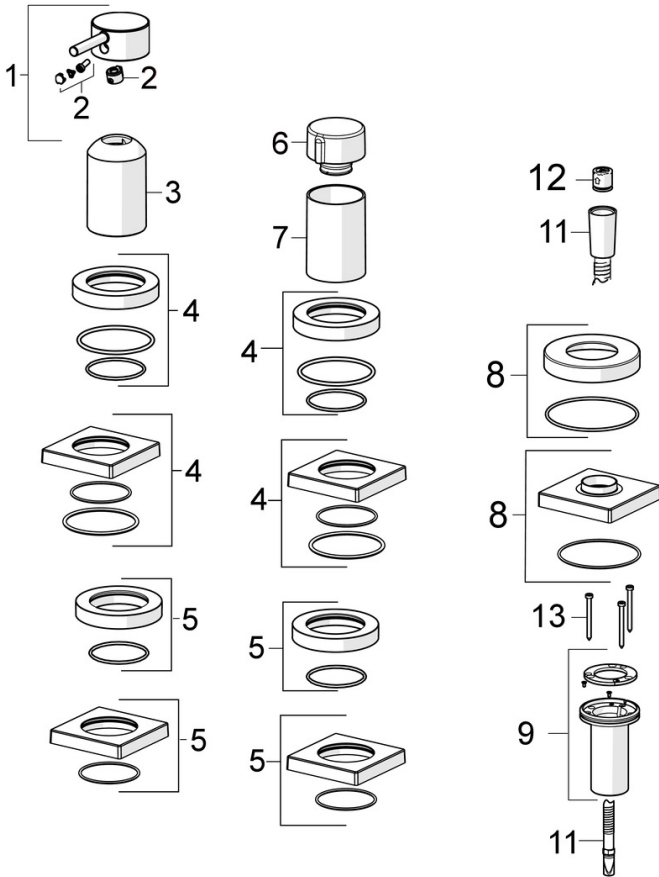
Norme

Standard EN

EN 817, EN 1112, EN 1113



Parti di ricambio



SP57319412

	Nome	Codice
01	Leva Cromo	1006310V
02	Tappo	59914573
03	Rosetta Cromo	59914572
04	Piastra, d 72 mm, for Compact Cromo	59914667
04	Piastra, 75x75 mm Cromo	59914213
05	Piastra, d 72 mm Cromo	59914668
05	Piastra, 75x75 mm Cromo	59914214
06	Manopola di apertura Cromo	59914669
07	Rosetta Cromo	59914671
08	Piastra, 75x75 mm Cromo	1003885V
08	Piastra, d 72 mm Cromo	59914672
09	Supporto per doccetta	59914673
11	Flessibile doccia, L=1750, G1/2-M12x1 Cromo	59912281
12	Valvola antiriflusso	59905714
13	Screw, M4x45	59912291