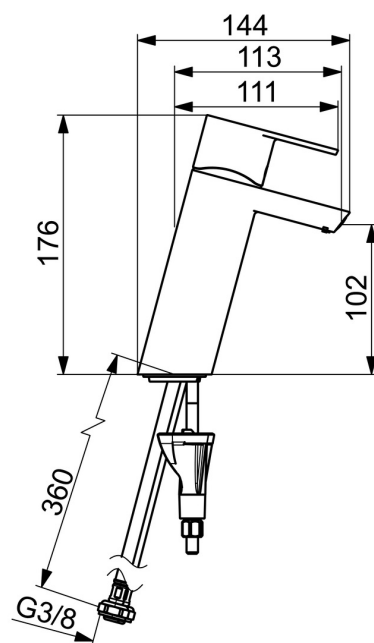
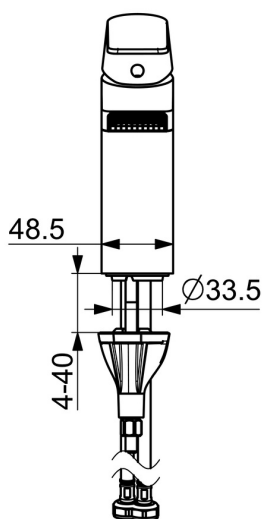
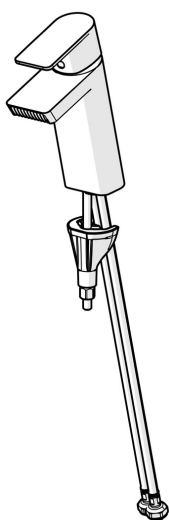


EAN: 4057304015434  
[static.hansa.com/57082273](https://static.hansa.com/57082273)



- Washbasin
- Single-lever
- Deck mounted
- Chrome
- Fixed spout
- Laminar stream
- Single operating lever/handle, Hot/Cold symbols
- $\varnothing$  40 mm ceramic cartridge for flow and temperature control
- Flexible inlet pipes
- Inner body made of DZR brass, 3S-installation system for safe and simple mounting
- Without pop-up waste
- diamond structured water flow



Technical data

Flow properties

Flow-rate at 3 bar (with flow controller)	5.4 l/min
---	-----------

Technical properties

Hot water supply	max. +70°C
Working pressure	0.5-10 bar
Connection size	G3/8
Projection	113 mm
Backflow prevention (EN1717)	AA
Material	Brass

Regulations

EN standard	EN 817
Noise class	I (ISO 3822)

Approvals and Declarations

ABP	P-IX 38183/10
EPD	S-P-06391

Sustainability

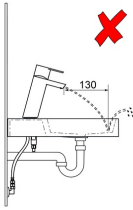
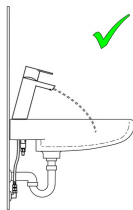
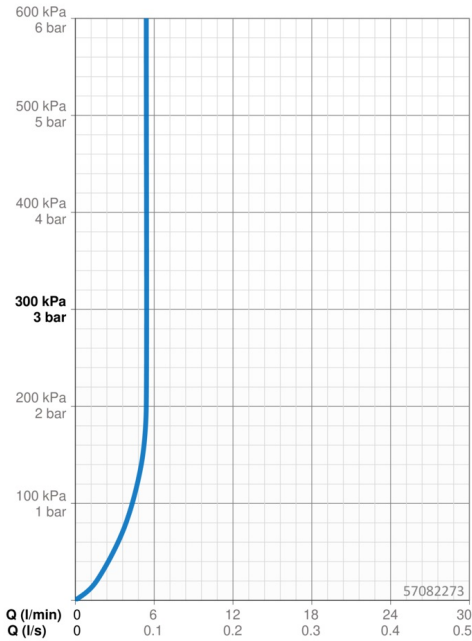
EPD module A1 (kg CO2 eq.)	11,15
EPD module A2 (kg CO2 eq.)	0,53
EPD module A3 (kg CO2 eq.)	1,05
EPD module A1-A3 (kg CO2 eq.)	12,74
EPD module A4 (kg CO2 eq.)	0,35
EPD module B7 (kg CO2 eq.)	1668,60
EPD module C2 (kg CO2 eq.)	0,02
EPD module C3 (kg CO2 eq.)	0,03
EPD module C4 (kg CO2 eq.)	0,10
EPD module D (kg CO2 eq.)	-9,06



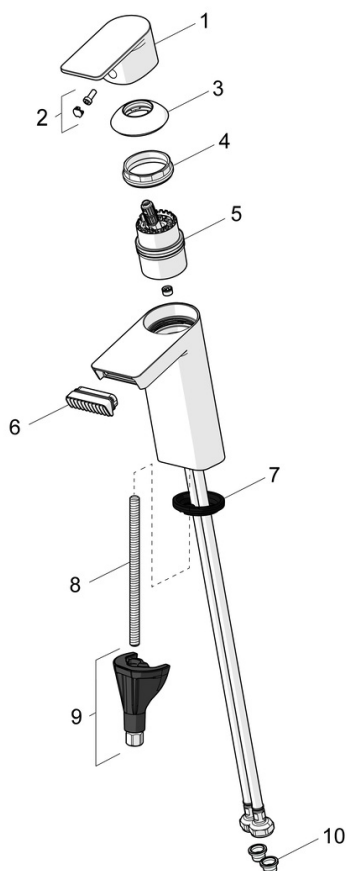
reddot winner 2021



DESIGN  
AWARD  
2021



## Spare parts



### SP57082273

	Name	Code
01	Lever	1009774V
02	Symbol plug	59914573
03	Covering cap	59914649
04	Tightening nut, M42x1.5, SW 38	59914128
05	Cartridge	59914665
06	Aerator	1006714V
07	Bottom seal	59914591
08	Fixing screw, M8x1, L=130	59914474
09	Fixing set	59914475
10	Litter filter	59911684