

EAN: 4057304012051
static.hansa.com/56382203



- Kitchen
- Single-lever
- Wall mounted
- Chrome
- Swivel spout
- Standard aerator
- Hot/Cold symbols, Single operating lever/handle
- Limitation option for maximum temperature and flow-rate, Adjustable hot water stop (included, retrofittable)
- Non-return valve(s), ø 35 mm ceramic cartridge for flow and temperature control
- Eccentric coupling(s)
- Inner body made of DZR brass

Technical data

Flow properties

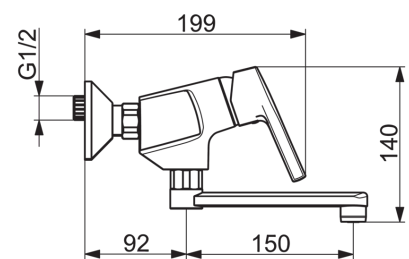
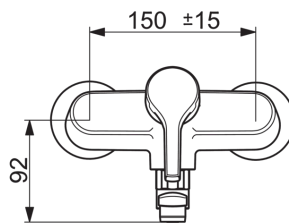
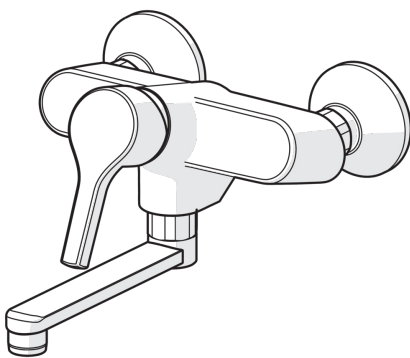
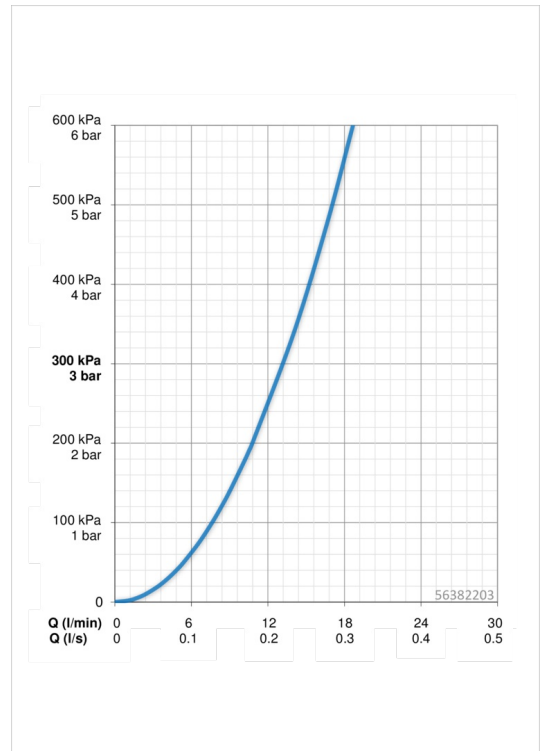
Flow-rate at 3 bar **13.2 l/min**

Technical properties

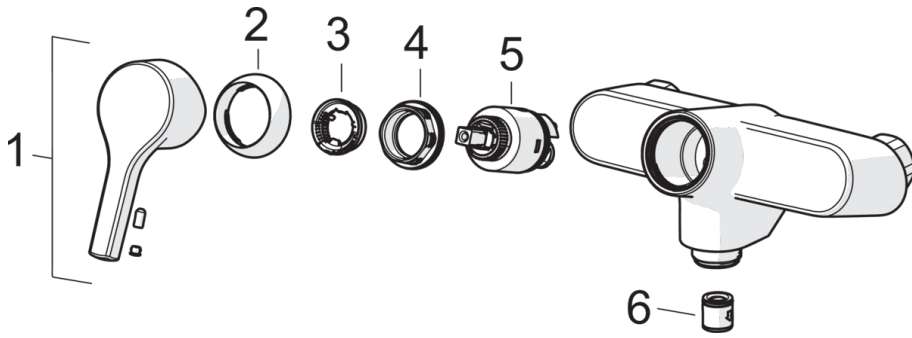
DN-size (nominal dimension) **DN15**
 Hot water supply **max. +90°C**
 Working pressure **0.5-10 bar**
 Connection size **G1/2**
 Installation width **cc150 ± 15 mm**
 Projection **242 mm**
 Material **Brass**

Regulations

EN standard **EN 817**
 Noise class **I (ISO3822)**



Spare parts



SP56382203

	Name	Code
01	Lever	59914712
02	Covering cap, 33 x 3 mm	59912504
03	Temperature adjustment limiter	59912325
04	Tightening nut, M40x1, SW30	59913210
05	Cartridge, 3.5 Classic	59913075
06	Non-return valve	59905714
N.I.	Spout, L=200	59914471
N.I.	Aerator, M22x1	59914469
N.I.	Spout, L=150	59914470