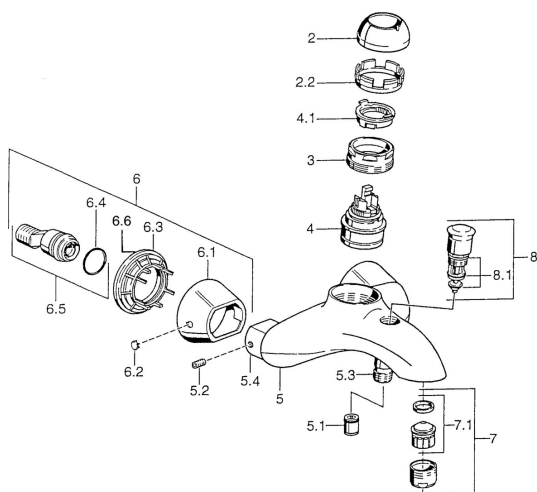


EAN: 4015474002814
static.hansa.com/55742130



- Bathtub & Shower
- Single-lever
- Wall mounted
- Chrome

- Non-return valve(s)
- Without operation lever
- protected against back-flow in domestic use (according to DIN EN 1717)

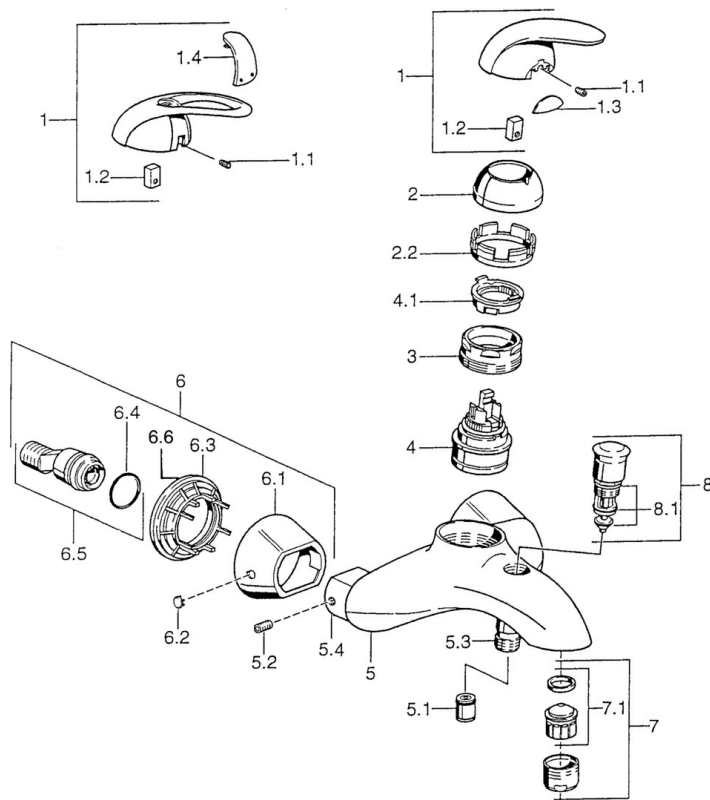
Technical data

Technical properties

Hot water supply
 Working pressure
 Backflow prevention (EN1717)

max. +80°C
0.5-10 bar
EB

Spare parts



SP55742100

	Name	Code
1	Lever Discontinued	599055881
1.1	Screw, M5x8, SW2.5	59904755
1.2	Bushing	59904778
1.3	Symbol plug Discontinued	59911785
1.4	Symbol plug Discontinued	59911786
2	Covering cap Chrome/Satin Discontinued	59906564
2	Covering cap	59906563
2.2	Fixing sleeve	59906695
3	Eye screw, M50x1, SW45	59904775
4	Cartridge, 4.8 eco	59904601
4.1	Hot water limiter	59904759
5.1	Non-return valve	59905714
5.2	Screw, M8x8	59906104
5.3	Thread nipple, G1/2xM18x1	59911384
5.4	Connection nipple Discontinued	59911797
6.1	Cover flange Discontinued	59911473
6.2	Plug Discontinued	59911480
6.3	Adapter Discontinued	59911486
6.4	O-ring, 25.07x2.62	59911479
6.5	Connector, G1/2	59911491
7	Aerator, M28x1 C	59902088
7.1	Aerator, M28x1 C Discontinued	59902089
8	Diverter Discontinued	59911799
8.1	Sealing kit	59904791
N.I.	Gasket, 52x63x5 Discontinued	59911798