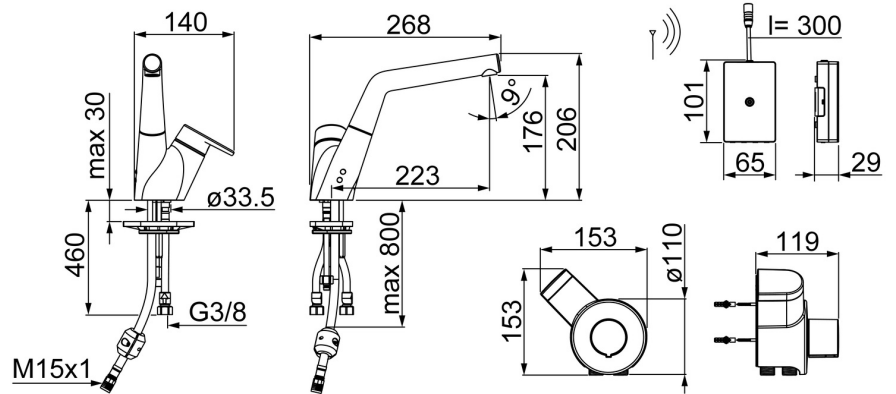
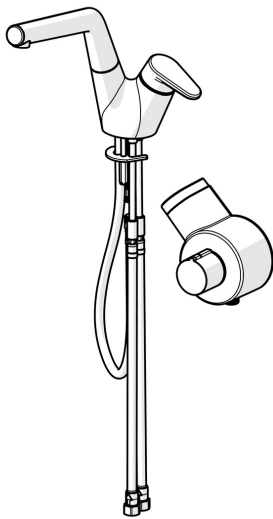


EAN: 4057304002373  
[static.hansa.com/55702203](https://static.hansa.com/55702203)



- Kitchen
- Hybrid, Battery-operated
- Deck mounted
- Chrome
- Swivel spout, Pull-out model
- Hot/Cold symbols, Temperature control handle
- Limitation option for maximum temperature and flow-rate, Adjustable hot water stop (included, retrofittable)
- Thermostatic cartridge for automatic temperature control, Non-return valve(s), Litter filter(s), ø 40 mm ceramic cartridge for flow and temperature control
- Solenoid valve, External control unit, Light indicated function(s)
- Flexible inlet pipes
- Software settings adjustable via magnetic key



Technical data

Flow properties

Flow-rate at 3 bar

12.0 l/min

Technical properties

DN-size (nominal dimension)

DN15

Hot water supply

max. +70°C

Working pressure

1-10 bar

Connection size

G3/8

Projection

225 mm

Backflow prevention (EN1717)

EB

Software settings

Automatic flush

off (off/12/24/48/72 h)

Automatic flush period

30 s (10/30/60/120/180/240/300/600 s)

Electronic properties

Battery

AA 1.5 V Lithium x 2

Regulations

EU Directives

C € EMC Directive 2014/30/EU , RoHS Directive 2011/65/EU

EN standard

EN 15091, ETSI EN 301 489-1 V1.9.2 , ETSI EN 300 328 v2.2.2 , EN 61000-6-1:2007 , EN 61000-6-3:2007+A1:2011+AC:2012 , EN 60335-1:2012+A11+A13+A1+A14+A2+A15:2021, Part 19.11.4

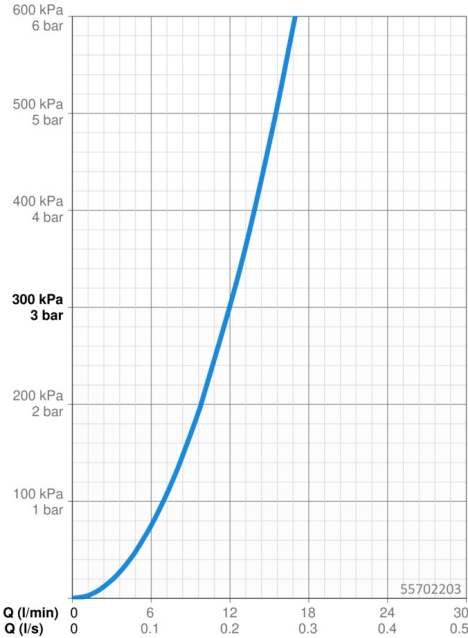
Protection class

IP 55

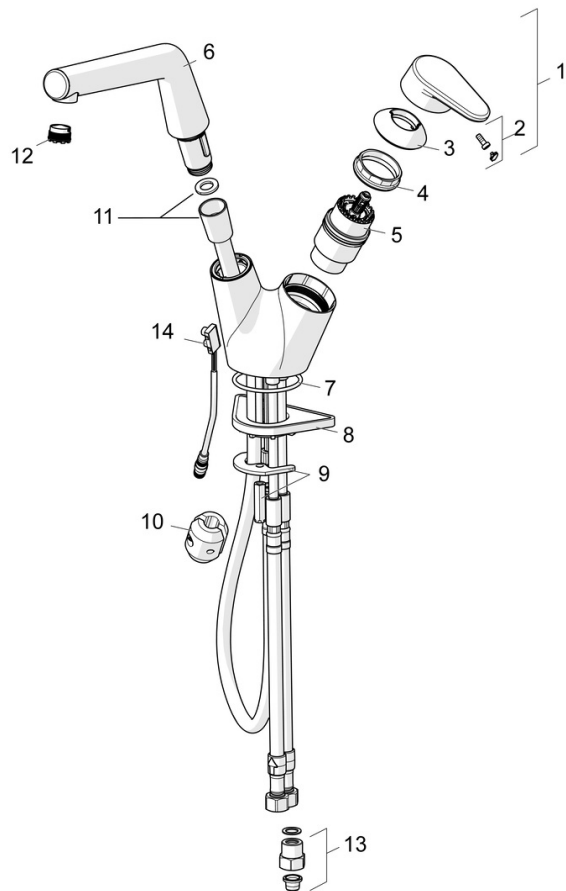
Approvals and Declarations

UN38.3

1118120077

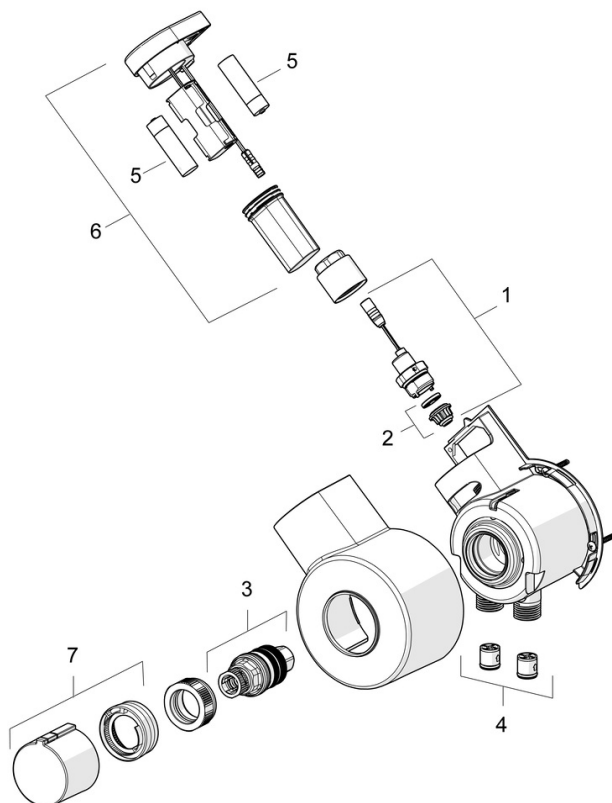


## Spare parts



### SP55702203

	Name	Code
01	Lever	59914340
02	Symbol plug	59914341
03	Covering cap Discontinued	59914342
04	Tightening nut, M4x1.5, SW 38	59914128
05	Cartridge, 4.0 Classic	59914129
06	Spout Discontinued	59914517
07	O-ring, 53.64x2.62 Discontinued	59914369
08	Supporting plate	59910008
09	Fixing plate with a nut	59914344
10	Counterbalance	59914039
11	Hose, L=1500, G1/2-M15x1	59914345
12	Aerator and key, M18.5x1	59914350
13	One-way valve with litter screen	59914086
14	Sensor, 3 V	59914347



### SP601579D

	Name	Code
01	Solenoid valve complete, 3 V	59914125
02	Membrane for solenoid valve	1006500V
02	Membrane Discontinued	59914126
03	Thermostatic cartridge, 3.4	59914114
04	Non-return valve, DN15	59914250
05	Battery, 1.5 V AA Lithium	59914136
06	Control unit, 3 V / RF Discontinued	59914623
07	Temperature control handle Discontinued	59914134