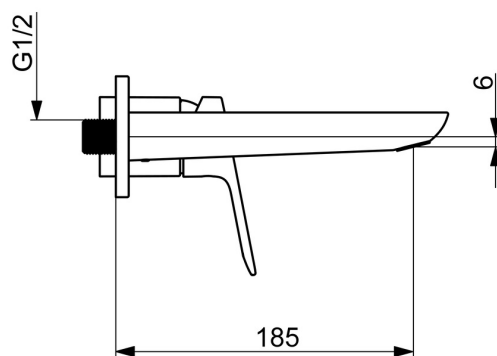
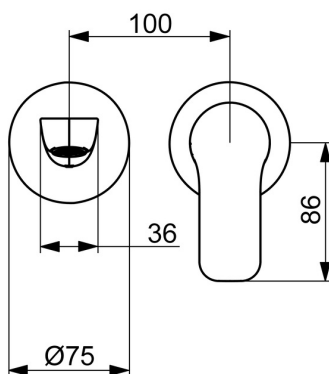
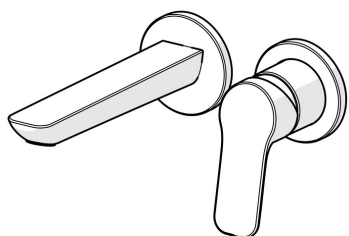


EAN: 4057304019036
static.hansa.com/55602103



- Washbasin
- Trim Kit, Single-lever
- Concealed wall mounting
- Chrome
- Fixed spout
- PCA® - constant flow rate regardless of pressure variations, Hidden aerator
- Hot/Cold symbols, Single operating lever/handle
- ø 35 mm ceramic cartridge for flow and temperature control



Technical data

Flow properties

Flow-rate at 3 bar (with flow controller)

6.0 l/min

Technical properties

Hot water supply

max. +80°C

Working pressure

0.5-10 bar

Projection

185 mm

Backflow prevention (EN1717)

AA

Material

Brass

Regulations

EN standard

EN 817

Approvals and Declarations

Declaration of conformity

DoC

EPD

S-P-07752

Sustainability

EPD module A1 (kg CO2 eq.)

8,27

EPD module A2 (kg CO2 eq.)

0,26

EPD module A3 (kg CO2 eq.)

5,16

EPD module A1-A3 (kg CO2 eq.)

13,64

EPD module A4 (kg CO2 eq.)

0,23

EPD module B7 (kg CO2 eq.)

1158,00

EPD module C2 (kg CO2 eq.)

0,01

EPD module C3 (kg CO2 eq.)

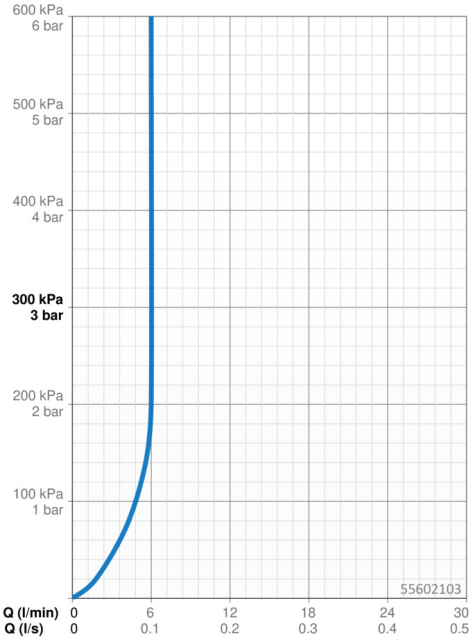
0,01

EPD module C4 (kg CO2 eq.)

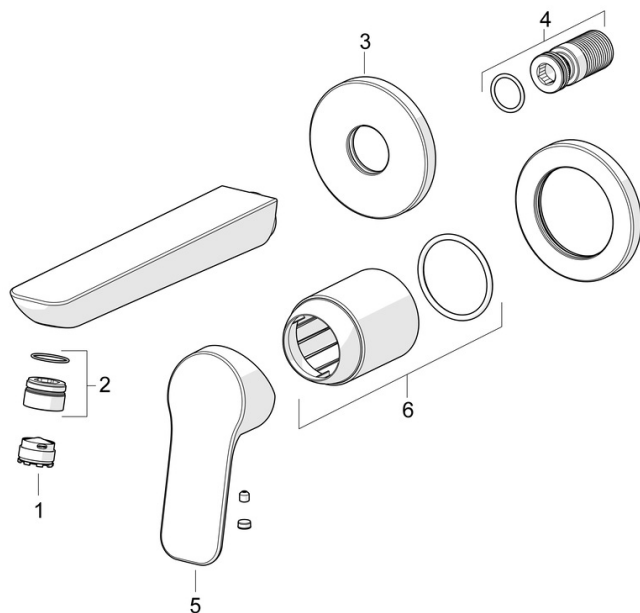
0,18

EPD module D (kg CO2 eq.)

-4,22



Spare parts



SP55602103

	Name	Code
01	Aerator, M18.5x1, TJ	59913366
02	Fitting ring for aerator	59913654
03	Cover flange, d 75 mm	59913246
04	Thread nipple	59913658
05	Lever	1014955V
06	Cover sleeve	59912511