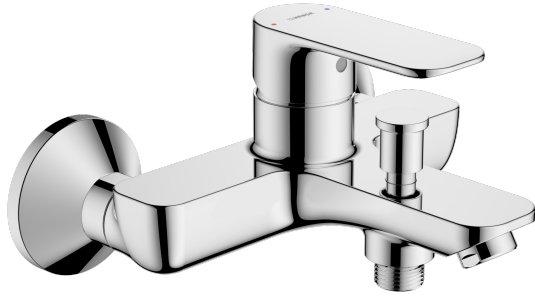
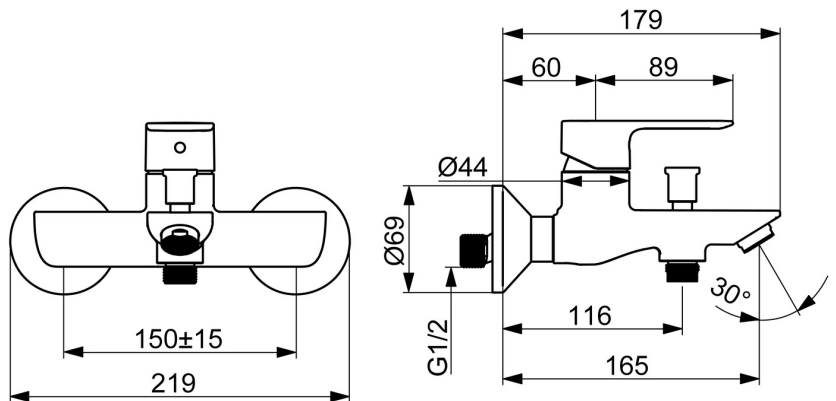
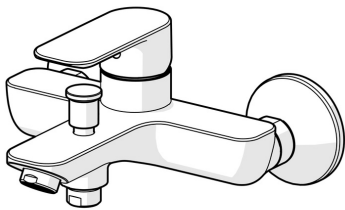


EAN: 4057304019067
static.hansa.com/55442103



- Bathtub & Shower
- Single-lever
- Wall mounted
- Chrome
- Fixed spout
- Standard aerator
- Hot/Cold symbols, Single operating lever/handle
- Pull operated diverter, Automatic reset
- ø 35 mm ceramic cartridge for flow and temperature control
- Eccentric coupling(s)



Technical data

Flow properties

Flow-rate at 3 bar **21.6 / 13.2 l/min**

Technical properties

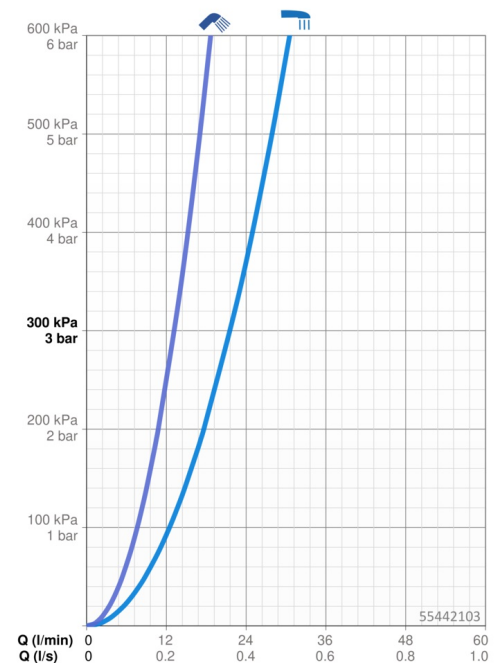
DN-size (nominal dimension) **DN15**
 Hot water supply **max. +80°C**
 Working pressure **0.5-10 bar**
 Connection size **G3/4**
 Installation width **CC150 ± 15 mm**
 Projection **165 mm**
 Backflow prevention (EN1717) **EB**
 Material **Brass**

Regulations

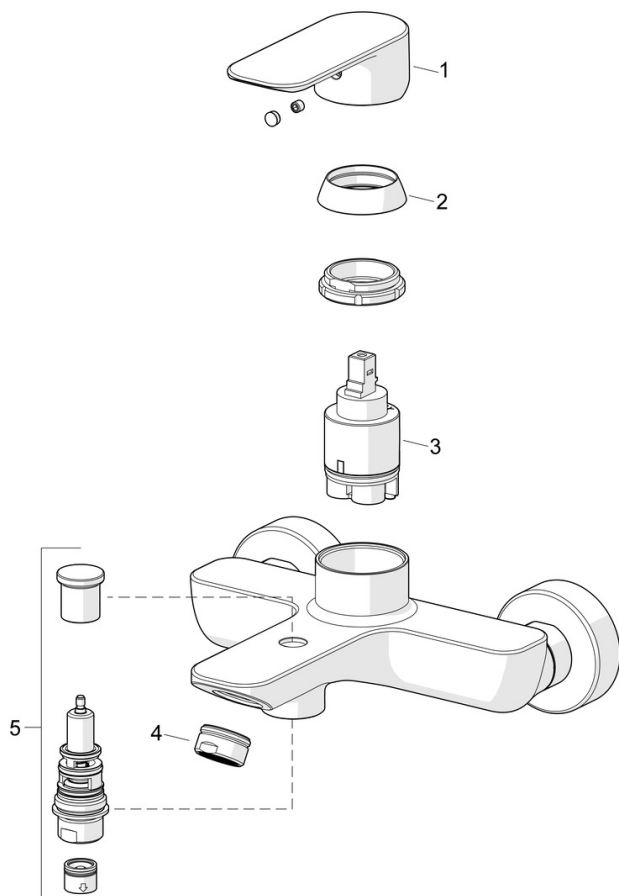
EN standard **EN 817**
 Noise class **I (ISO 3822)**

Approvals and Declarations

DVGW **DW-6506D00165**



Spare parts



SP55442103

	Name	Code
01	Lever	1017126V
02	Covering cap	1017127V
03	Cartridge, 3.5 Classic	59913075
04	Aerator, M24x1 D	59911829
05	Diverter	1017135V