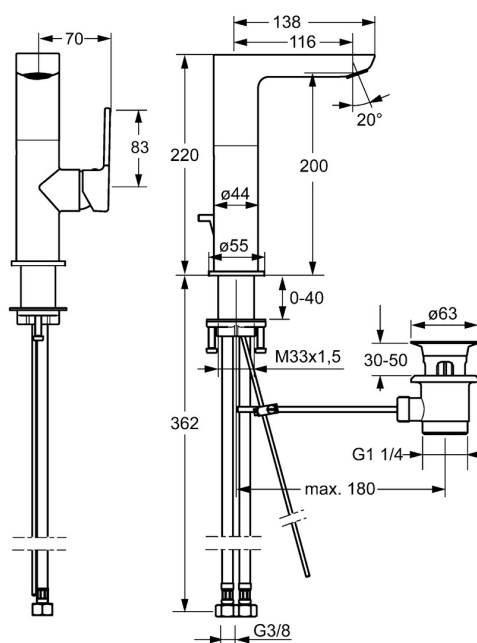
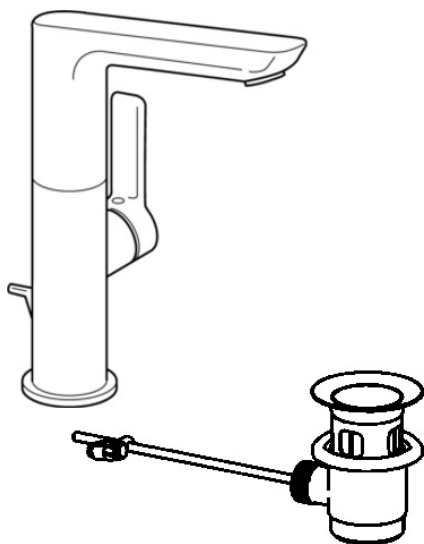


EAN: 4015474261730
static.hansa.com/55302203



- Washbasin
- Single-lever, side operated
- Deck mounted
- Chrome
- Swivel spout
- PCA® - constant flow rate regardless of pressure variations, Hidden aerator
- Hot/Cold symbols, Single operating lever/handle
- Pop-up waste with draw-rod
- ø 25 mm ceramic cartridge for flow and temperature control
- Flexible inlet pipes
- Inner body made of DZR brass



Technical data

Flow properties

Flow-rate at 3 bar (with flow controller)

6.0 l/min

Technical properties

DN-size (nominal dimension)

DN15

Hot water supply

max. +70°C

Working pressure

0.5-10 bar

Connection size

G3/8

Projection

116 mm

Backflow prevention (EN1717)

AA

Material

Brass

Regulations

EN standard

EN 817

Noise class

I (ISO 3822)

Approvals and Declarations

ABP

P-IX 29922/IO

EPD

S-P-06391

Sustainability

EPD module A1 (kg CO2 eq.)

15,68

EPD module A2 (kg CO2 eq.)

0,75

EPD module A3 (kg CO2 eq.)

1,48

EPD module A1-A3 (kg CO2 eq.)

17,92

EPD module A4 (kg CO2 eq.)

0,50

EPD module B7 (kg CO2 eq.)

1854,00

EPD module C2 (kg CO2 eq.)

0,03

EPD module C3 (kg CO2 eq.)

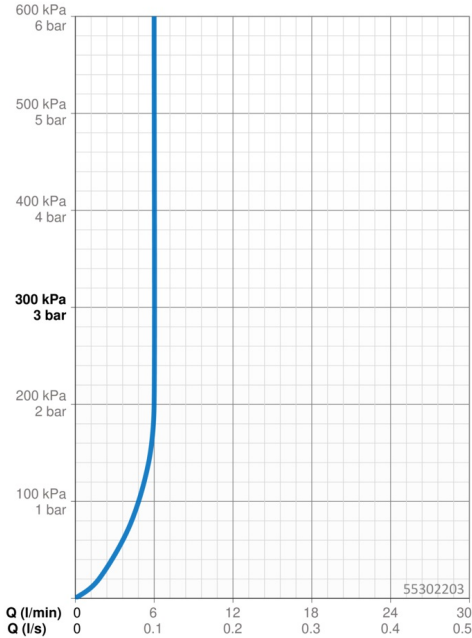
0,04

EPD module C4 (kg CO2 eq.)

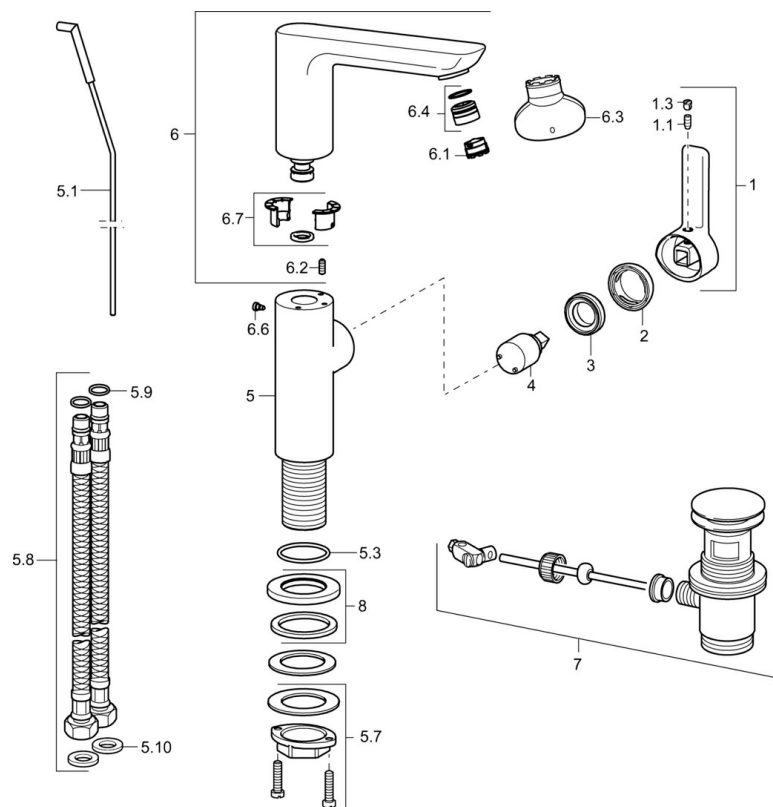
0,14

EPD module D (kg CO2 eq.)

-12,75



Spare parts



SP55302203

	Name	Code
1	Lever, 2.5	59914001
1.1	Screw, M5x8, SW2.5	59904755
1.3	Cover plug	59913762
2	Covering cap	59913957
3	Tightening nut, M32x1, SW24	59913958
4	Cartridge, 2.5	59913914
5.1	Pop-up operating rod	59913959
5.3	O-ring, 35x2.5	59905020
5.7	Fixing set	59913371
5.8	Flexible pipe, L=430, G3/8-M8x1	59913964
5.9	O-ring, 6x1.4	59913266
5.10	Gasket, 9.5x14.4x2	59912551
6	Spout	59914023
6.1	Aerator, M18.5x1, TJ	59913366
6.2	Fixing screw, M4x8	59913989
6.3	Key for aerator, M18.5	59913367
6.4	Fitting ring for aerator	59913654
6.6	Screw, M4x7	59902075
6.7	Sealing kit	59911884
7	Pop-up waste	59911441
8	Cover flange, d 55 mm	59913963