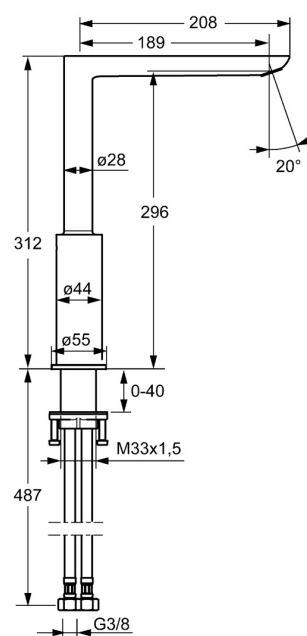
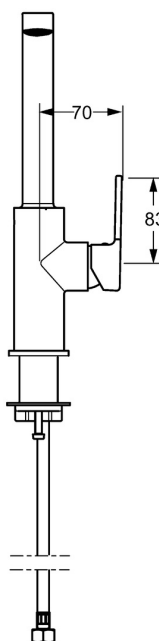
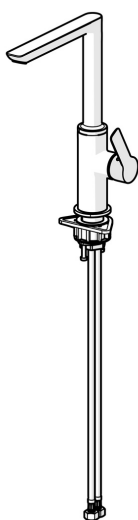


EAN: 4015474261716
static.hansa.com/55282203



- Kitchen
- Single-lever, side operated
- Deck mounted
- Chrome
- Swivel spout
- Standard aerator
- Hot/Cold symbols, Single operating lever/handle, Flow control handle
- \varnothing 25 mm ceramic cartridge for flow and temperature control
- Flexible inlet pipes
- Inner body made of DZR brass



Flow properties

Flow-rate at 3 bar **9.0 l/min**

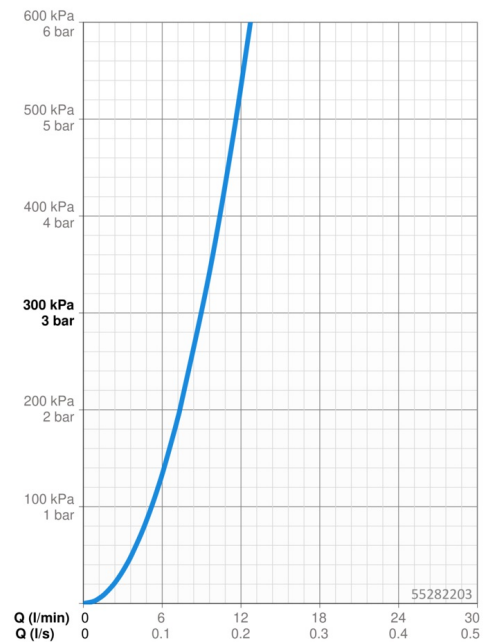
Technical properties

DN-size (nominal dimension)	DN15
Hot water supply	max. +70°C
Working pressure	1-10 bar
Connection size	G3/8
Projection	189 mm
Backflow prevention (EN1717)	AA
Material	Brass

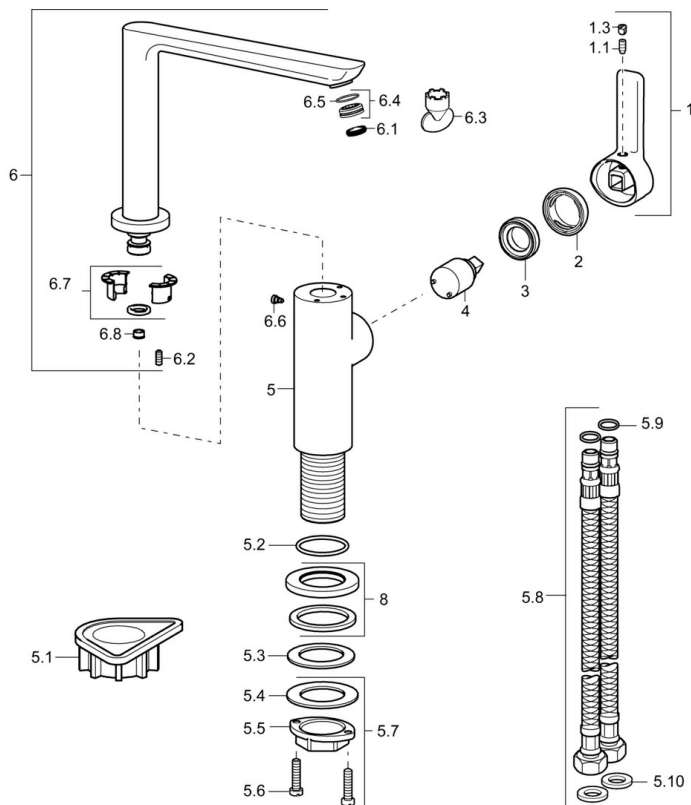
Regulations

EN standard	EN 817
Noise class	I (ISO 3822)

Approvals and Declarations

ABP P-IX 29665/10

Spare parts



SP55282203

	Name	Code
1	Lever, 2.5	59914001
1.1	Screw, M5x8, SW2.5	59904755
1.3	Cover plug	59913762
2	Covering cap	59913957
3	Tightening nut, M32x1, SW24	59913958
4	Cartridge, 2.5	59913914
5.1	Supporting plate	59910008
5.2	O-ring, 35x2.5	59905020
5.3	Gasket, 48x33.5x2	59902283
5.7	Fixing set	59913371
5.8	Flexible pipe, L=550, G3/8-M8x1	59913969
5.9	O-ring, 6x1.4	59913266
5.10	Gasket, 9.5x14.4x2	59912551
6	Spout	59914002
6.1	Aerator, M18x1	59913997
6.2	Fixing screw, M4x8	59913989
6.3	Key for aerator, M18x1	59913998
6.4	Gasket ring	59913996
6.6	Screw, M4x7	59902075
6.7	Sealing kit	59911884
6.8	Flow control handle, 9 L/min Discontinued	59914000
8	Cover flange, d 55 mm	59913963