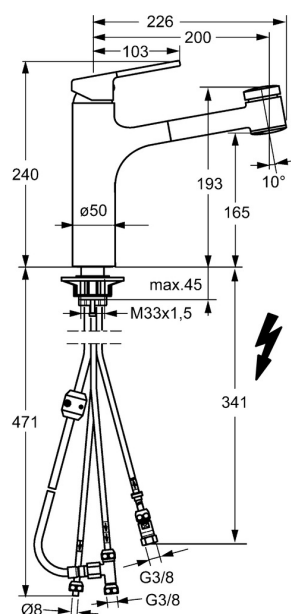


EAN: 4015474261822
static.hansa.com/55191133



- Kitchen
- Single-lever, Low pressure
- Deck mounted
- Chrome
- Swivel spout, Pull-out model
- Laminar stream, Standard aerator
- Hot/Cold symbols, Single operating lever/handle
- Limitation option for maximum temperature and flow-rate, Adjustable hot water stop (included, retrofittable)
- Non-return valve(s), Ø 35 mm ceramic cartridge for flow and temperature control
- Copper inlet pipes
- Surfaces in contact with drinking water contain less than 0.3% lead, Inner body made of DZR brass, Waterways without nickel coating
- protected against back-flow in domestic use (according to DIN EN 1717)
- 2 spray functions



Technical data

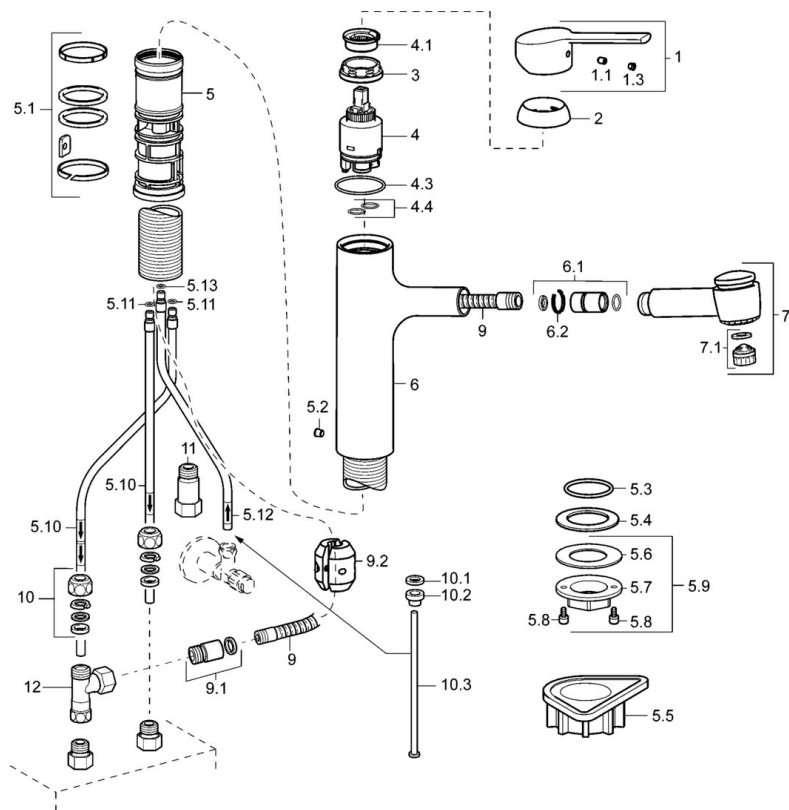
Technical properties

DN-size (nominal dimension)	DN15
Hot water supply	max. +80°C
Working pressure	0.5-5 bar
Connection size	Ø8 mm
Projection	200 mm
Backflow prevention (EN1717)	EB
Material	Brass

Regulations

EN standard **EN 817**

Spare parts



SP55191133

	Name	Code
1	Lever, (2013-)	59913991
1.1	Screw, M5x8, SW2.5	59904755
1.3	Cover plug	59913762
2	Covering cap, 33x3 mm	59912504
3	Tightening nut, M37x1, AF30 Discontinued	59912111
4	Cartridge, 3.5 Classic	59913075
4	Cartridge, 3.5 Eco	59912324
4.1	Temperature adjustment limiter	59912325
4.3	O-ring, d 28.24x2.62 Discontinued	59912590
4.4	O-ring, d 10.10x1.60 Discontinued	59905072
5.1	Sealing kit	59913313
5.2	Screw, M6x0.75 Discontinued	59913314
5.3	O-ring, 35x2.5	59905020
5.4	Gasket, 48x33.5x2	59902283
5.5	Supporting plate	59910008
5.9	Fixing set	59913479
5.10	Pipe, M8x1, L=560	59912806
5.11	O-ring, 6x1.4	59913266
5.12	Coupling pipe, M10x1, L=480 Discontinued	59914042
5.13	O-ring, d 7.65x1.78	59902337
6	Spout Discontinued	59914040
6.1	Connection nipple	59914029
7	Pull-out spout	59914037
7.1	Aerator, M22/M24x1, (-2017)	59914038
7.1	Aerator, M18.5x1	59913489
9	Hose, L=1400	59914032
9.1	Conversion nipple	59914028
9.2	Counterbalance	59914039
10	Fitting nut	59904969
10.1	Sealing kit, 14.9x8.5x1	59902352
10.2	Sealing kit, 10x8	59902272
10.3	Hose	59902151
11	Non-return valve, G3/8xG3/9	59912107
12	T-connector, M14x1 ND	59913480