

EAN: 4057304017469
static.hansa.com/54542207



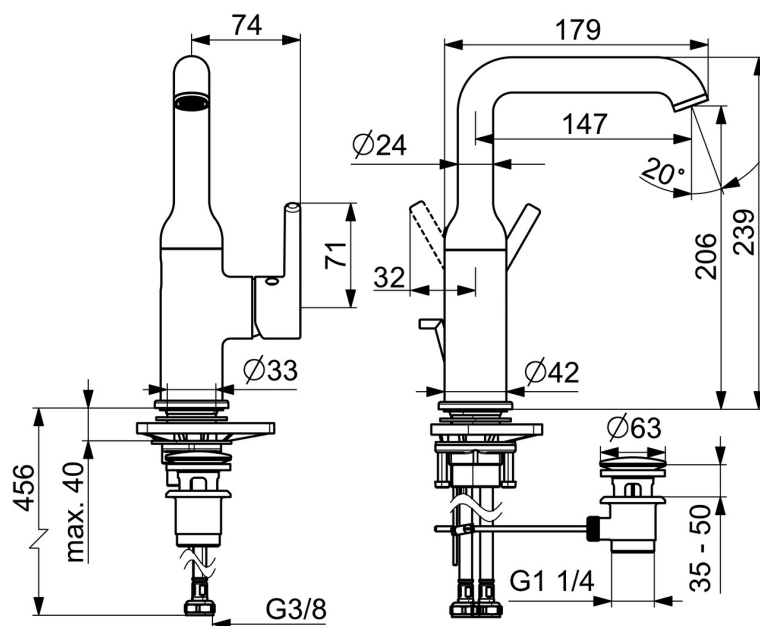
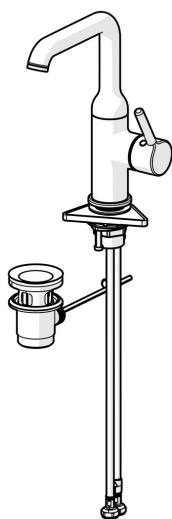
When great design becomes an attraction of its own, you know it will make a difference in your life. Besides bringing beauty to life, this new classic is also designed to bring any modern bathroom to the next level.

The slim side lever and the swivel spout guarantee perfect freedom of movement and comfort for every bathroom routine. Slender design and graceful shapes make this faucet the highlight of any space.

High quality
 Sleek design
 Anti-limescale rubber aerator for easy cleaning
 Pop up waste with draw rod
 Made in Europe

Perfect fit for any bathroom

- Washbasin
- Single-lever, side operated
- Deck mounted
- Chrome
- Swivel spout
- Standard aerator, PCA® - constant flow rate regardless of pressure variations
- Single operating lever/handle, Pin shape, Hot/Cold symbols
- Pop-up waste with draw-rod
- Limitation option for maximum temperature and flow-rate
- Ø 30 mm ceramic cartridge for flow and temperature control
- Flexible inlet pipes
- Inner body made of DZR brass



Technical data

Flow properties

Flow-rate at 3 bar (with flow controller)

6.0 l/min

Technical properties

Hot water supply

max. +70°C

Working pressure

0.5-10 bar

Connection size

G3/8

Projection

147 mm

Backflow prevention (EN1717)

AA

Material

Brass

Regulations

EN standard

EN 817

Noise class

I (ISO 3822)

Approvals and Declarations

Declaration of conformity

DoC

EPD

S-P-06391

Sustainability

EPD module A1 (kg CO2 eq.)

9,52

EPD module A2 (kg CO2 eq.)

0,46

EPD module A3 (kg CO2 eq.)

0,90

EPD module A1-A3 (kg CO2 eq.)

10,88

EPD module A4 (kg CO2 eq.)

0,30

EPD module B7 (kg CO2 eq.)

1854,00

EPD module C2 (kg CO2 eq.)

0,02

EPD module C3 (kg CO2 eq.)

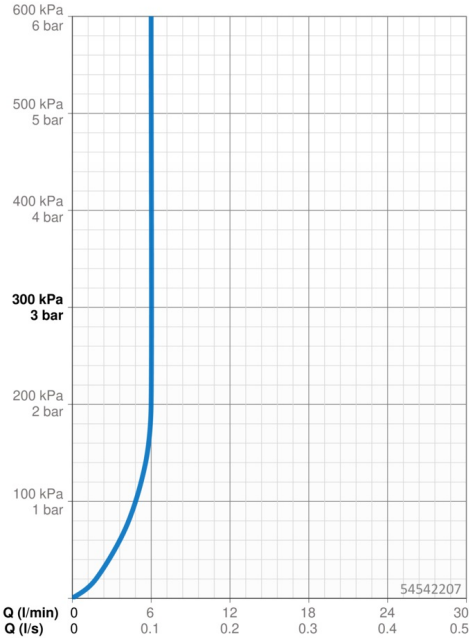
0,02

EPD module C4 (kg CO2 eq.)

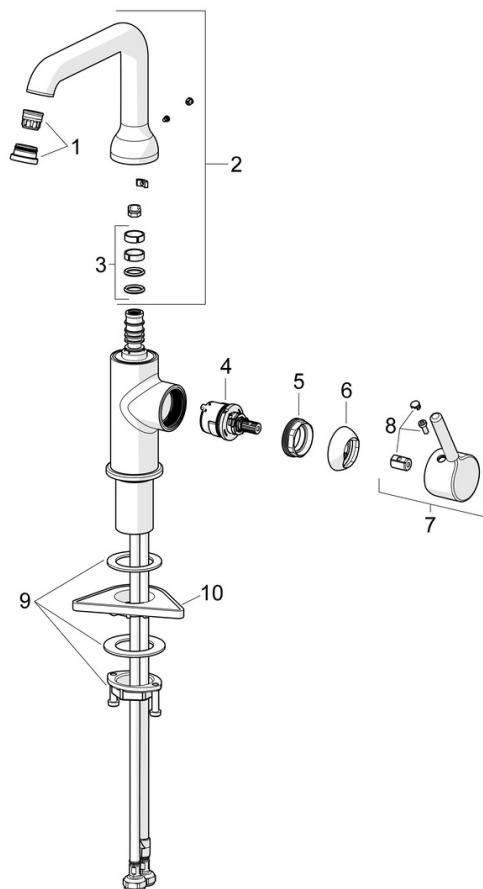
0,08

EPD module D (kg CO2 eq.)

-7,74



Spare parts



SP54552207

	Name	Code
01	Aerator and key, PCA 5.7 l/min	1012273V
02	High spout	1012339V
03	Sealing kit for spout	59914266
04	Cartridge, 3.0	1014428V
05	Tightening nut, M34x1.5	1012133V
06	Covering cap	1012132V
07	Lever	1001749V
08	Symbol plug	1012105V
09	Fixing set	59913479
10	Supporting plate	59910008