

EAN: 4057304017520
static.hansa.com/54442207



When great design becomes an attraction of its own, you know it will make a difference in your life. Besides bringing beauty to life, this new classic is also designed to bring any modern bathroom to the next level.

Elegant designed Rosetta for good installation coverage

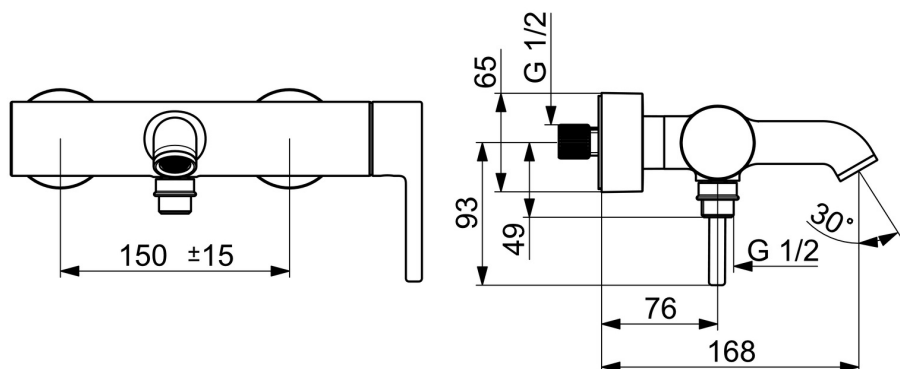
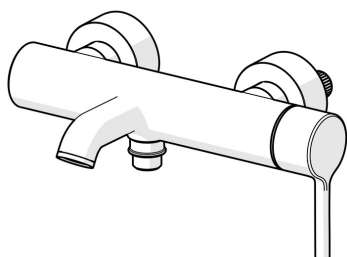
High quality

Sleek design

Made in Europe

Shower and bath faucet - Perfect fit for any bathroom

- Bathtub & Shower
- Single-lever, side operated
- Wall mounted
- Chrome
- Fixed spout
- Standard aerator
- Single operating lever/handle, Pin shape, Hot/Cold symbols
- Pull operated diverter, Automatic reset
- Limitation option for maximum temperature and flow-rate, Adjustable hot water stop (included, retrofittable)
- \varnothing 40 mm ceramic cartridge for flow and temperature control
- Eccentric coupling(s), Cover plate(s)
- Inner body made of DZR brass
- protected against back-flow in domestic use (according to DIN EN 1717)



Technical data

Flow properties

Flow-rate at 3 bar

21.0 / 15.0 l/min

Technical properties

Hot water supply

max. +80°C

Working pressure

0.5-10 bar

Connection size

G3/4

Installation width

CC150± 15 mm

Projection

168 mm

Backflow prevention (EN1717)

EB

Material

Brass

Regulations

EN standard

EN 817

Noise class

II (ISO 3822)

Approvals and Declarations

EPD

S-P-06397

Sustainability

EPD module A1 (kg CO2 eq.)

13,13

EPD module A2 (kg CO2 eq.)

0,61

EPD module A3 (kg CO2 eq.)

1,51

EPD module A1-A3 (kg CO2 eq.)

15,25

EPD module A4 (kg CO2 eq.)

0,54

EPD module B7 (kg CO2 eq.)

2637,50

EPD module C2 (kg CO2 eq.)

0,03

EPD module C3 (kg CO2 eq.)

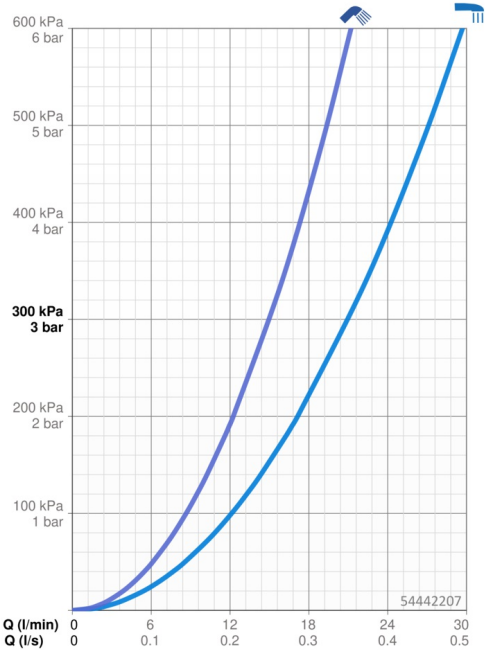
0,03

EPD module C4 (kg CO2 eq.)

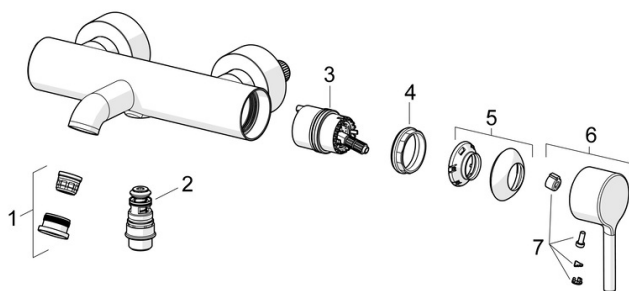
1,08

EPD module D (kg CO2 eq.)

-9,68



Spare parts



SP54442207

	Name	Code
01	Aerator and key, STD B Laminar	1014220V
02	Diverter	59914663
03	Cartridge	59914665
04	Tightening nut, M42x1.5, SW 38	59914128
05	Covering cap	59914649
06	Lever	1014994V
07	Symbol plug	59914573