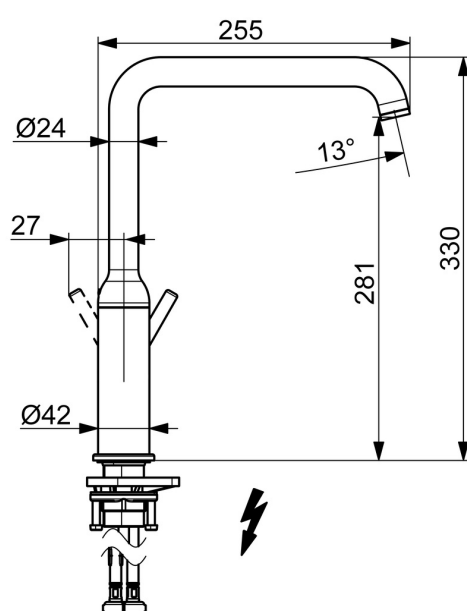
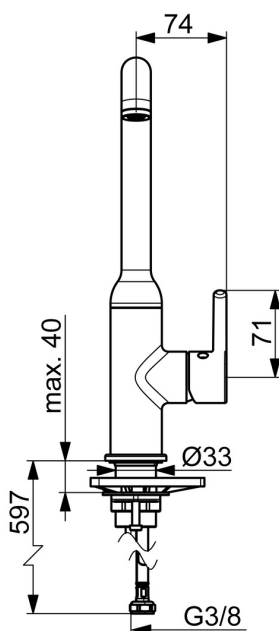


EAN: 4057304019876
static.hansa.com/5422110733



- Kitchen
- Single-lever, side operated, Low pressure
- Deck mounted
- Matt black
- Swivel spout
- Standard aerator, Laminar stream
- Single operating lever/handle, Pin shape, Hot/Cold symbols
- Limitation option for maximum temperature and flow-rate
- Ø 30 mm ceramic cartridge for flow and temperature control
- Flexible inlet pipes
- Inner body made of DZR brass



Technical data

Technical properties

Hot water supply	max. +70°C
Working pressure	0.5-10 bar
Connection size	G3/8
Projection	255 mm
Backflow prevention (EN1717)	AA
Material	Brass

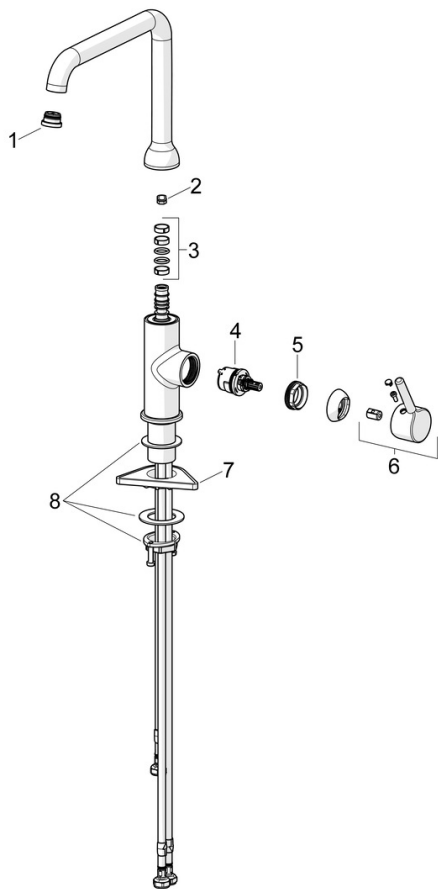
Regulations

EN standard	EN 817
Noise class	I (ISO 3822)

Approvals and Declarations

Declaration of conformity	DoC
---------------------------	-----

Spare parts



SP5422110733

	Name	Code
01	Aerator and key, Cascade SLC TJ A Matt black	1014808V-33
02	Spout overturning stopper, 60° / 0°	59914264
02	Spout overturning stopper, 120° Discontinued	59914429
03	Sealing kit for spout	59914431
04	Cartridge, 3.0	1014428V
05	Tightening nut, M34x1.5	1012133V
06	Lever Matt black	1001749V-33
07	Supporting plate	59910008
08	Fixing set	59913371