

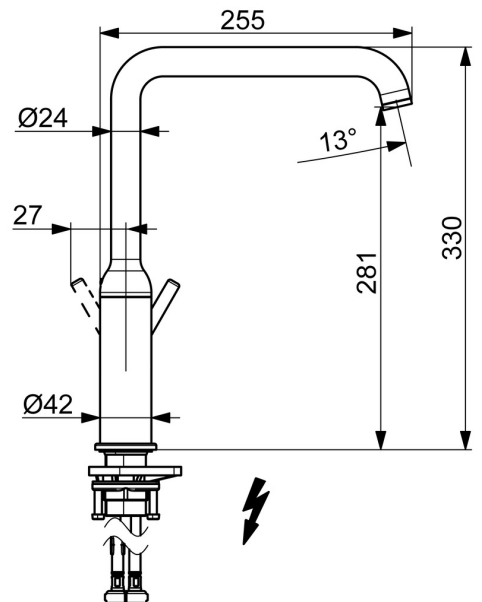
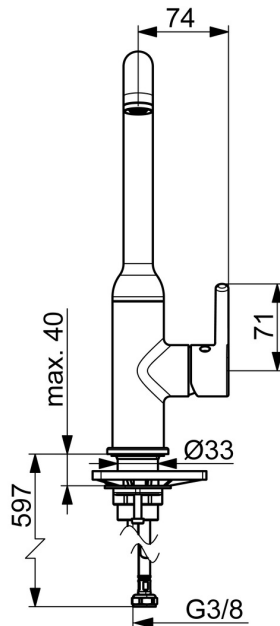
EAN: 4057304019838
static.hansa.com/54221107



When great design becomes an attraction of its own, you know it will make a difference in your life. Besides bringing beauty to life, this new classic is also designed to bring any modern kitchen to the next level. Slender design and graceful shapes make this faucet the highlight of any space.

1. Single-Lever Side Operation: Easily control the water flow and temperature with just one hand, making it a breeze to use while cooking, cleaning, or entertaining guests.
2. Swivel Spout: The swivel spout allows for easy access to all areas of your sink, making it perfect for washing large pots and pans or filling up water bottles.
3. Limitation Option: This faucet comes with a temperature and flow-rate limitation option, ensuring that you and your family are safe from scalding water and conserving water usage.
4. DZR Brass Inner Body: The inner body of this faucet is made of DZR brass, ensuring durability and longevity.
5. Easy Installation: This faucet comes with flexible inlet pipes and only requires one hole for mounting, making installation a breeze.

- Kitchen
- Single-lever, side operated, Low pressure
- Deck mounted
- Chrome
- Swivel spout
- Standard aerator, Laminar stream
- Single operating lever/handle, Pin shape, Hot/Cold symbols
- Limitation option for maximum temperature and flow-rate
- Ø 30 mm ceramic cartridge for flow and temperature control
- Flexible inlet pipes
- Inner body made of DZR brass



Technical data

Technical properties

Hot water supply	max. +70° C
Working pressure	0.5-10 bar
Connection size	G3/8
Projection	255 mm
Backflow prevention (EN1717)	AA
Material	Brass

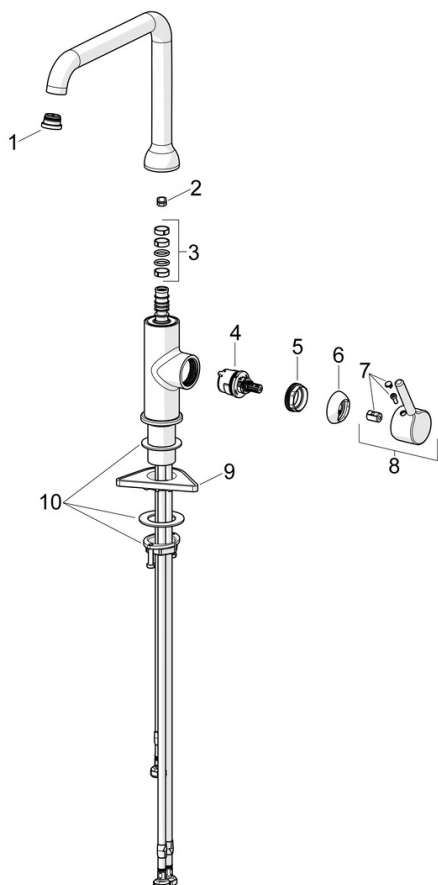
Regulations

EN standard	EN 817
Noise class	I (ISO 3822)

Approvals and Declarations

Declaration of conformity	DoC
---------------------------	-----

Spare parts



SP54221107

	Name	Code
01	Aerator and key, Cascade SLC TJ V	1017751V
02	Spout overturning stopper, 60°/0°	59914264
02	Spout overturning stopper, 120° Discontinued	59914429
03	Sealing kit for spout	59914431
04	Cartridge, 3.0	1014428V
05	Tightening nut, M34x1.5	1012133V
06	Covering cap	1012132V
07	Symbol plug	1012105V
08	Lever	1001749V
09	Supporting plate	59910008
10	Fixing set	59913371