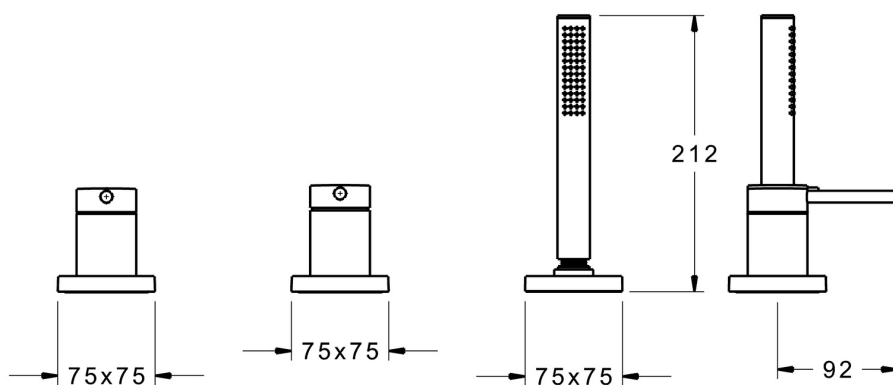
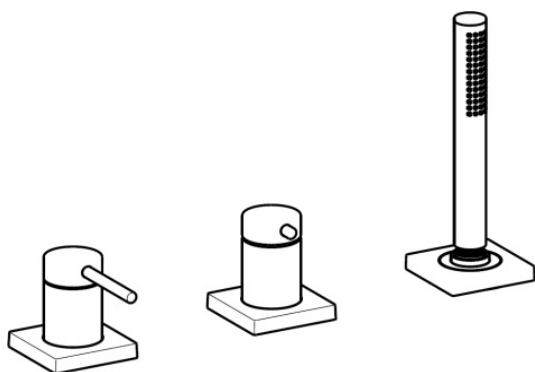


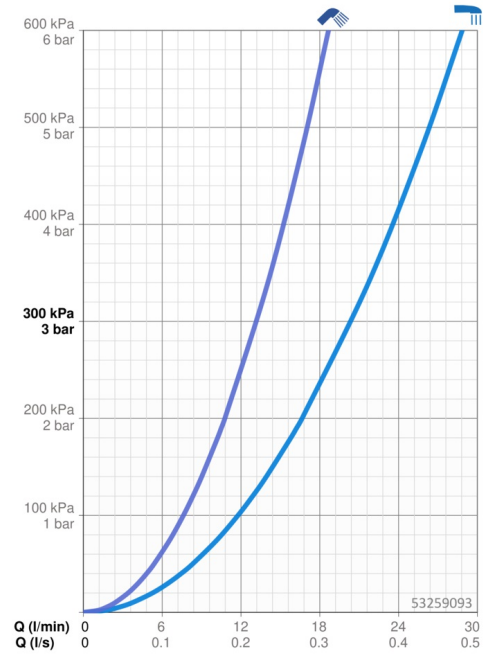
EAN: 4015474277007  
[static.hansa.com/53259093](https://static.hansa.com/53259093)

- Bathtub & Shower
- Trim Kit, Single-lever
- Rim mounted
- Chrome
- Pin shape, Single operating lever/handle, Hot/Cold symbols
- Shower hose (1750 mm)
- Intense - invigorating water stream
- Litter filter(s), Non-return valve(s)
- Square rosette
- 1 spray function

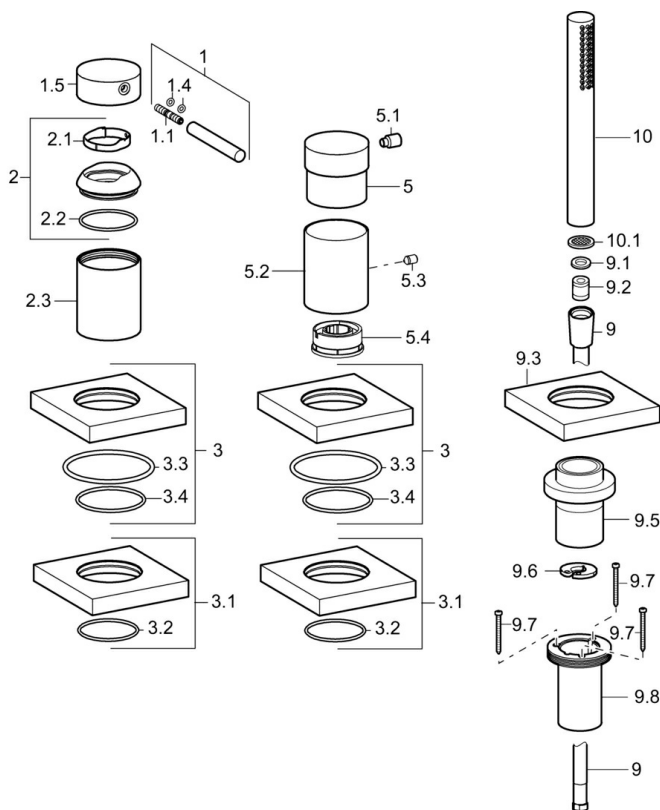


Technical data

Flow properties	
Flow-rate at 3 bar	20.4 / 13.2 l/min
Technical properties	
Hot water supply	max. +80°C
Working pressure	0.5-10 bar
Backflow prevention (EN1717)	EB
Regulations	
EN standard	EN 817, EN 1112, EN 1113



## Spare parts



### SP53259093

	Name	Code
1	Lever, 70 mm	59913331
1.1	Screw, M5x35	59913299
1.4	O-ring, d 3x1.5	59913100
1.5	Cap	59913332
2	Covering cap	59913364
2.1	Bearing ring	59913363
2.2	O-ring, d 38x2	59913212
2.3	Cover flange	59913448
3	Cover flange, 75x75 mm	59914209
3.1	Cover flange, 75x75 mm	59914212
3.3	O-ring, 60x3	59913280
3.4	O-ring, d 40x2	59911507
5	Handle	59913345
5.1	Lever, 9 mm M6	59913348
5.2	Cover sleeve Discontinued	59914210
5.3	Screw, M4x4	59901027
5.4	Flow limiter	59911897
9	Shower hose, L=1750, G1/2-M12x1	59912281
9.1	Gasket ring, d 21x12x2	59912304
9.2	Non-return valve	59905714
9.3	Cover flange, 75x75 mm	59913879
9.5	Holder	59913289
9.6	Disk	59912337
9.7	Screw, M4x45	59912291
9.8	Passing-through bushing	59913288
10	Hand shower	54390100
10.1	Flow limiter	59912777
N.I.	Raising kit, 30 mm, HM 3.5 (-2015)	59913189
N.I.	Raising kit, 30 mm	59913190
N.I.	Extension screw kit, (2015-)	59914337