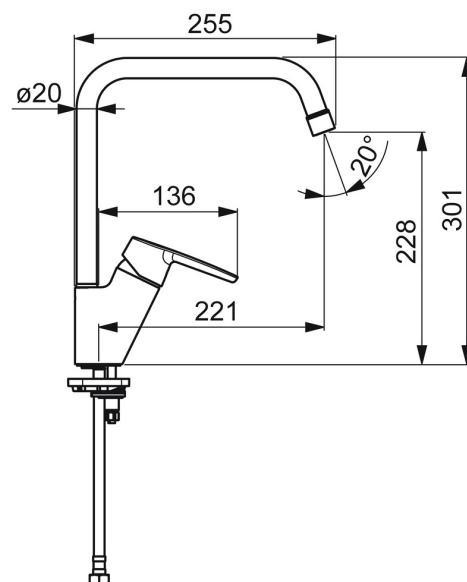
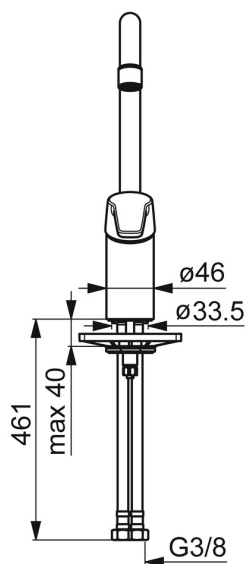
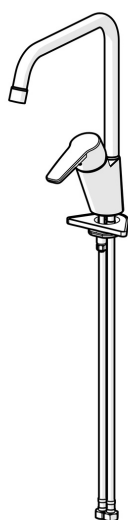


EAN: 4057304018435
static.hansa.com/5270220300066



- ECO Building, Housing
- Single-lever, Cold Start
- Deck mounted
- Chrome
- Swivel spout, Swivel range limiting option
- Standard aerator
- Single operating lever/handle, Hot/Cold symbols
- Limitation option for maximum temperature and flow-rate, Energy saving variation (Cold Start) - cold water in the middle position
- \varnothing 35 mm ceramic eco cartridge for flow and temperature control
- Flexible inlet pipes



Technical data

Flow properties

Eco-flow at 3 bar	4.5 l/min
Flow-rate at 3 bar	6.0 l/min
Flow-rate at 3 bar (with flow controller)	6.0 l/min

Technical properties

DN-size (nominal dimension)	DN15
Hot water supply	max. +70°C
Working pressure	0.5-10 bar
Connection size	G3/8
Projection	221 mm
Backflow prevention (EN1717)	AA
Material	Brass

Regulations

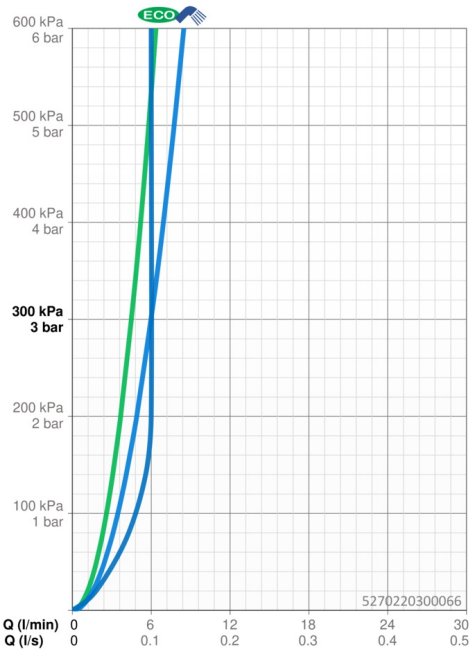
EN standard	EN 817
Noise class	I (ISO 3822)

Approvals and Declarations

Declaration of conformity	DoC
EPD	S-P-06396

Sustainability

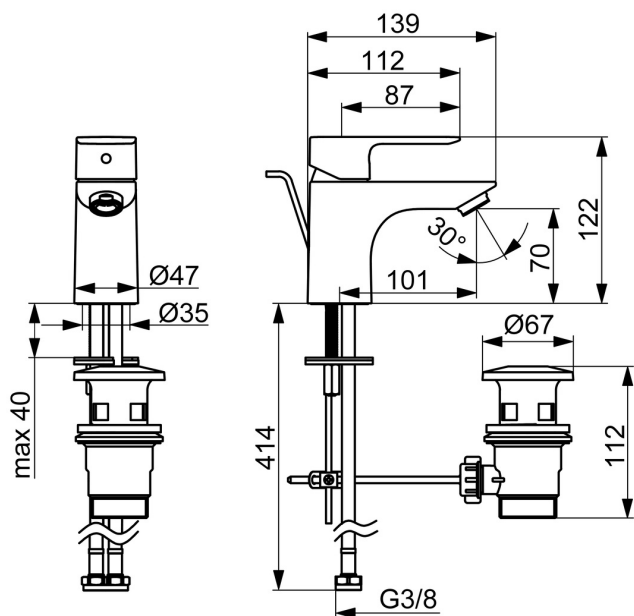
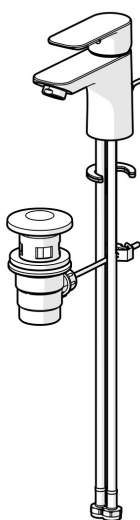
EPD module A1 (kg CO2 eq.)	6,04
EPD module A2 (kg CO2 eq.)	0,29
EPD module A3 (kg CO2 eq.)	2,66
EPD module A1-A3 (kg CO2 eq.)	8,98
EPD module A4 (kg CO2 eq.)	0,18
EPD module B7 (kg CO2 eq.)	1773,00
EPD module C2 (kg CO2 eq.)	0,01
EPD module C3 (kg CO2 eq.)	0,01
EPD module C4 (kg CO2 eq.)	0,27
EPD module D (kg CO2 eq.)	-5,08



EAN: 4057304018985
static.hansa.com/55402203



- Washbasin
- Single-lever
- Deck mounted
- Chrome
- Fixed spout
- PCA® - constant flow rate regardless of pressure variations
- Hot/Cold symbols, Single operating lever/handle
- Pop-up waste with draw-rod
- ø 35 mm ceramic cartridge for flow and temperature control
- Flexible inlet pipes
- Rapid installation system



Technical data

Flow properties

Flow-rate at 3 bar (with flow controller)

4.8 l/min

Technical properties

DN-size (nominal dimension)

DN15

Hot water supply

max. +70°C

Working pressure

0.5-10 bar

Connection size

G3/8

Projection

101 mm

Backflow prevention (EN1717)

AA

Material

Brass

Regulations

EN standard

EN 817

Noise class

I (ISO 3822)

Approvals and Declarations

DVGW

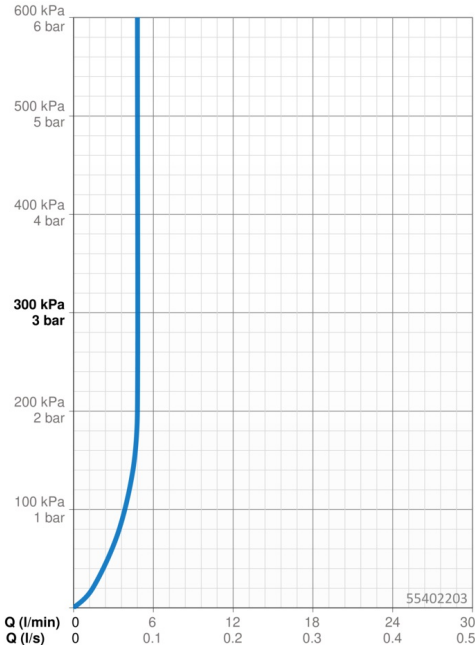
DW-6506D00165

ABP

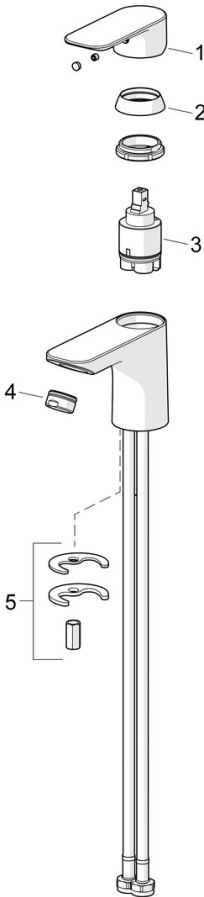
PA-IX 10072/IO

Declaration of conformity

DoC



Spare parts



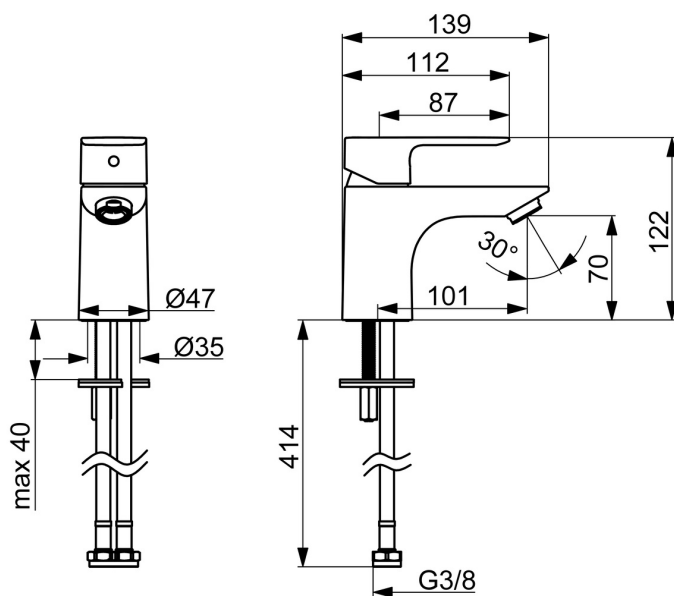
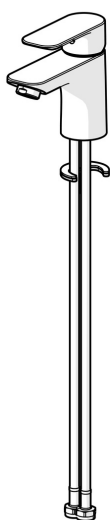
SP55402203

	Name	Code
01	Lever	1017126V
02	Covering cap	1017127V
03	Cartridge, 3.5 Classic	59913075
04	Aerator, M24x1, 6 l/min	59913727
05	Fixing set	1017128V

EAN: 4057304018978
static.hansa.com/55422203



- Washbasin
- Single-lever
- Deck mounted
- Chrome
- Fixed spout
- PCA® - constant flow rate regardless of pressure variations
- Hot/Cold symbols, Single operating lever/handle
- ø 35 mm ceramic cartridge for flow and temperature control
- Flexible inlet pipes
- Rapid installation system
- Without pop-up waste, Without draw-rod opening



Technical data

Flow properties

Flow-rate at 3 bar (with flow controller)	4.8 l/min
---	-----------

Technical properties

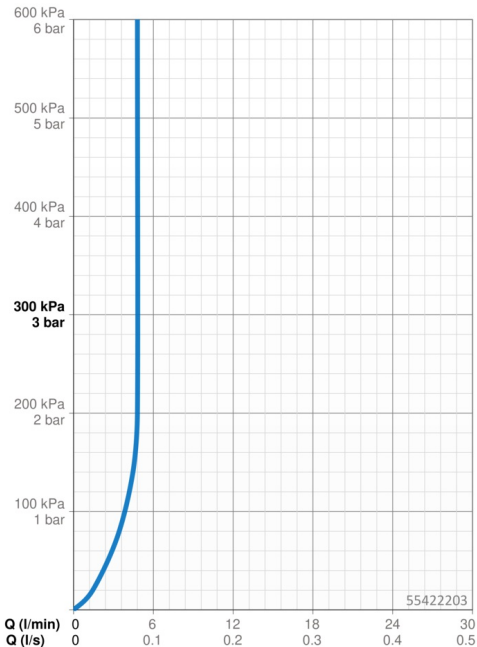
DN-size (nominal dimension)	DN15
Hot water supply	max. +70°C
Working pressure	0.5-10 bar
Connection size	G3/8
Projection	101 mm
Backflow prevention (EN1717)	AA
Material	Brass

Regulations

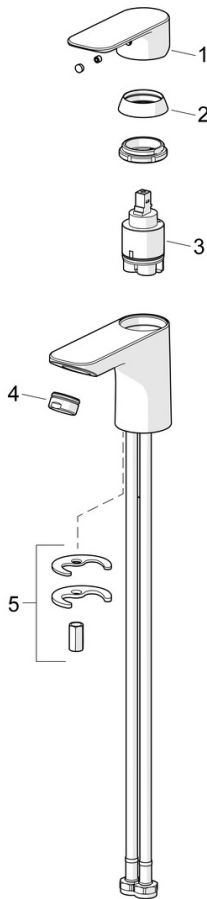
EN standard	EN 817
Noise class	I (ISO 3822)

Approvals and Declarations

DVGW	DW-6506D00165
ABP	PA-IX 10072/IO
Declaration of conformity	DoC



Spare parts



SP55402203

	Name	Code
01	Lever	1017126V
02	Covering cap	1017127V
03	Cartridge, 3.5 Classic	59913075
04	Aerator, M24x1, 6 l/min	59913727
05	Fixing set	1017128V