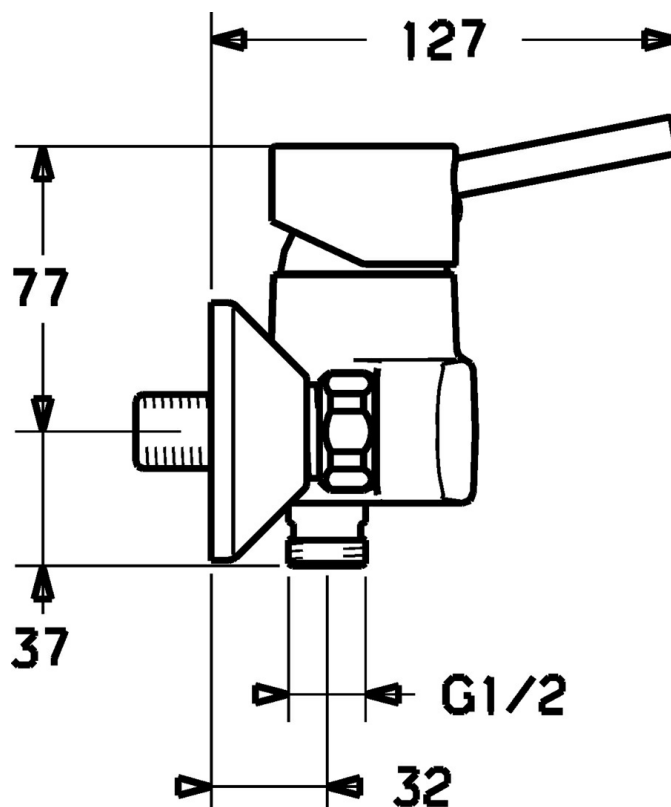
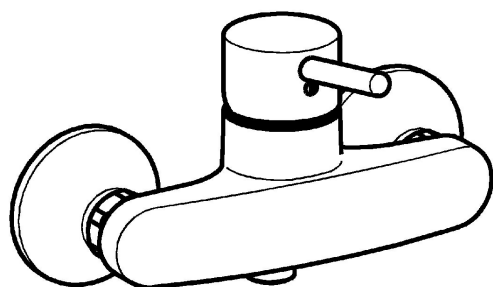


EAN: 4015474094819
static.hansa.com/52450107



- Shower solutions
- Single-lever
- Wall mounted
- Chrome
- Single operating lever/handle, Hot/Cold symbols
- Non-return valve(s)
- Silencer(s)
- protected against back-flow in domestic use (according to DIN EN 1717)



Technical data

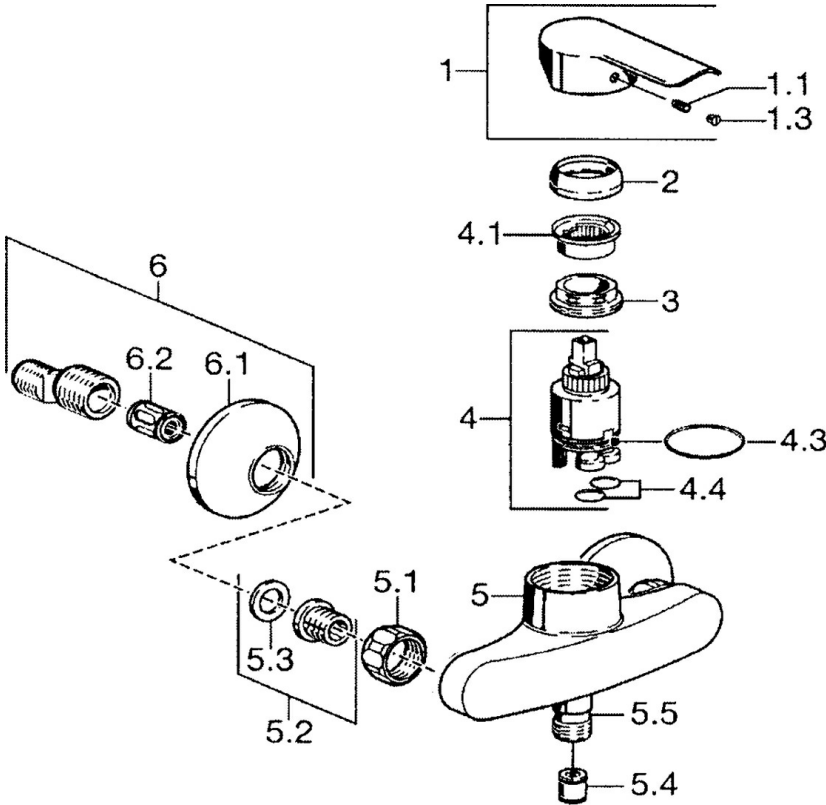
Technical properties

| | |
|------------------------------|------------|
| Hot water supply | max. +80°C |
| Working pressure | 0.5-10 bar |
| Backflow prevention (EN1717) | EB |

Regulations

| | |
|-------------|--------|
| EN standard | EN 817 |
|-------------|--------|

Spare parts



SP52450103

| | Name | Code |
|------|--|----------|
| 1 | Lever | 59914629 |
| 1 | Lever | 59913903 |
| 1.1 | Screw, M5x8, SW2.5 | 59904755 |
| 1.3 | Symbol plug Grey | 59912112 |
| 2 | Covering cap, 33x3 mm | 59912504 |
| 3 | Tightening nut, M37x1, AF30 Discontinued | 59912111 |
| 4 | Cartridge, 3.5 Eco | 59912324 |
| 4.1 | Temperature adjustment limiter | 59912325 |
| 4.4 | O-ring, d 10.10x1.60 Discontinued | 59905072 |
| 5.1 | Connection nut, G3/4, AF30 | 59902230 |
| 5.2 | Seat, G1/2, L, WAF10 | 59904618 |
| 5.3 | Retaining ring, 23.9x15.2x2 | 59902689 |
| 5.4 | Non-return valve | 59905714 |
| 5.5 | Thread nipple, G1/2xM18x1 | 59911384 |
| 6 | Eccentric, G3/4xG1/2 | 59904793 |
| 6.1 | Cover flange | 59904796 |
| 6.2 | Silencer | 59904792 |
| N.I. | Key, SW30/34 | 59912108 |