

EAN: 4015474253773
static.hansa.com/52402277



- Washbasin
- Single-lever
- Deck mounted
- Chrome
- Fixed spout
- PCA® - constant flow rate regardless of pressure variations
- Hot/Cold symbols, Pin shape, Single operating lever/handle
- Pop-up waste with draw-rod
- Limitation option for maximum temperature and flow-rate, Adjustable hot water stop (included, retrofittable)
- ø 35 mm ceramic cartridge for flow and temperature control
- Flexible inlet pipes
- Inner body made of DZR brass, Rapid installation system

Technical data

Flow properties

Flow-rate at 3 bar (with flow controller) **6.0 l/min**

Technical properties

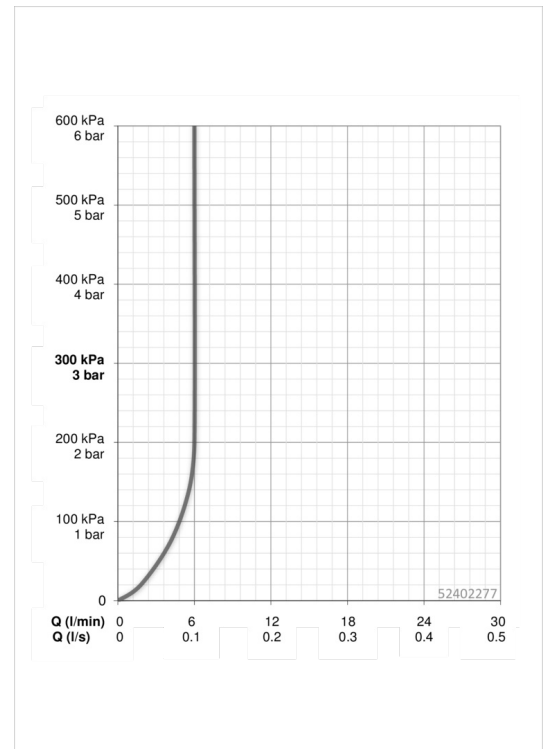
DN-size (nominal dimension) **DN15**
 Hot water supply **max. +80°C**
 Working pressure **0.5-10 bar**
 Connection size **G3/8**
 Projection **102 mm**

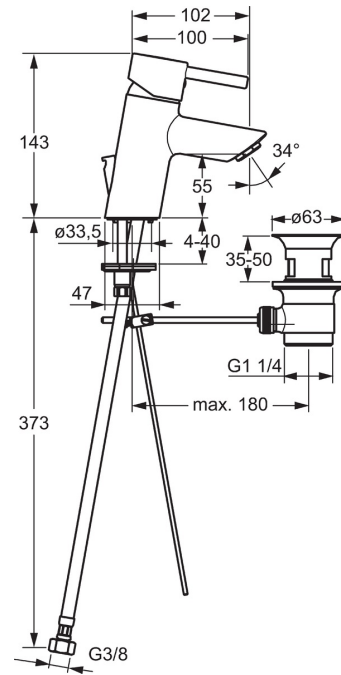
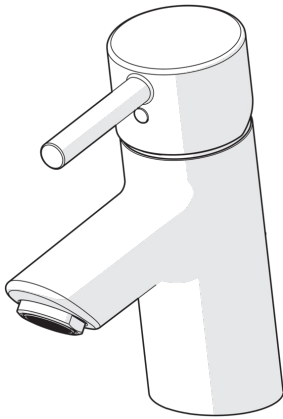
Regulations

EN standard **EN 817**

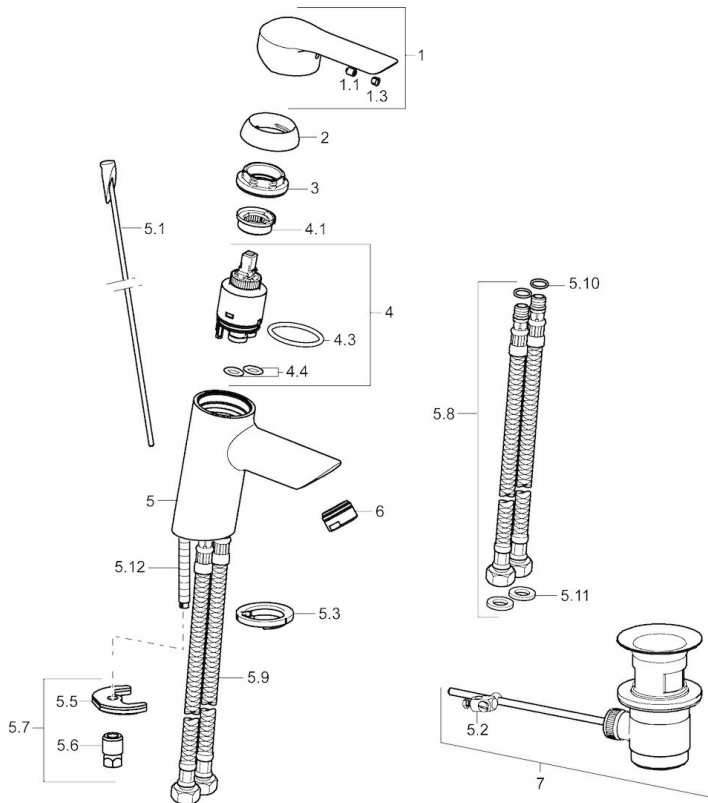
Approvals and Declarations

KIWA **K6116/08**





Spare parts



SP52402273

	Name	Code
1	Lever	59914629
1	Lever	59913840
1.1	Screw, M5x8, SW2.5	59904755
1.3	Symbol plug Grey	59912112
2	Covering cap, 33 x 3 mm	59912504
3	Tightening nut, M40x1, SW30	59913210
4	Cartridge, 3.5 Classic	59913075
4	Cartridge, 3.5 Eco	59912324
4.1	Temperature adjustment limiter	59912325
4.3	O-ring, d 28.24x2.62	59912590
4.4	O-ring, d 10.10x1.60	59905072
5.1	Pop-up operating rod	59913587
5.10	O-ring, d 7.65x1.78	59902337
5.11	Gasket, 9.5x14.4x2	59912551
5.12	Fixing screw, M8x1, L=140	59912474
5.2	Swivel joint	59904624
5.3	Bottom seal	59913653
5.5	Fixing plate	59904765
5.6	Screw, M8x1, SW13	59904766
5.7	Fixing set	59912113
5.8	Flexible pipe	59913213
5.9	Flexible pipe, L=430, G3/8-M10x1	59912515
6	Aerator, M24x1, 6 l/min	59913727
7	Pop-up waste, (2019-)	59914764
7	Pop-up waste	59904620
N.I.	Key, SW 30/34	59912108