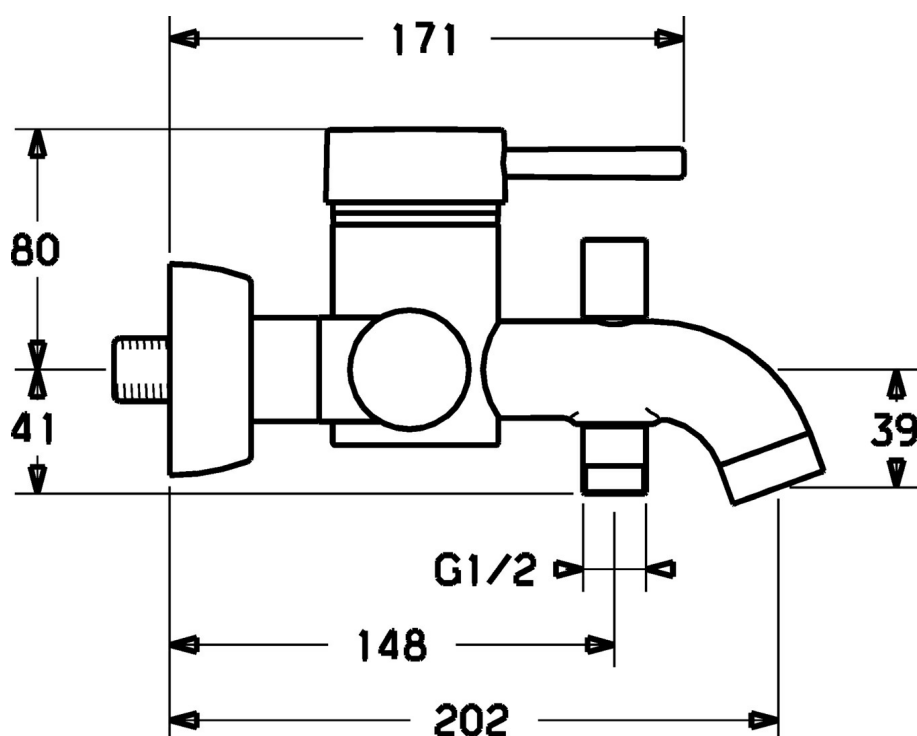


EAN: 4015474083318  
[static.hansa.com/51852101](https://static.hansa.com/51852101)



- Bathtub & Shower
- Single-lever
- Wall mounted
- Chrome
- Non-return valve(s)
- Silencer(s)
- protected against back-flow in domestic use (according to DIN EN 1717)

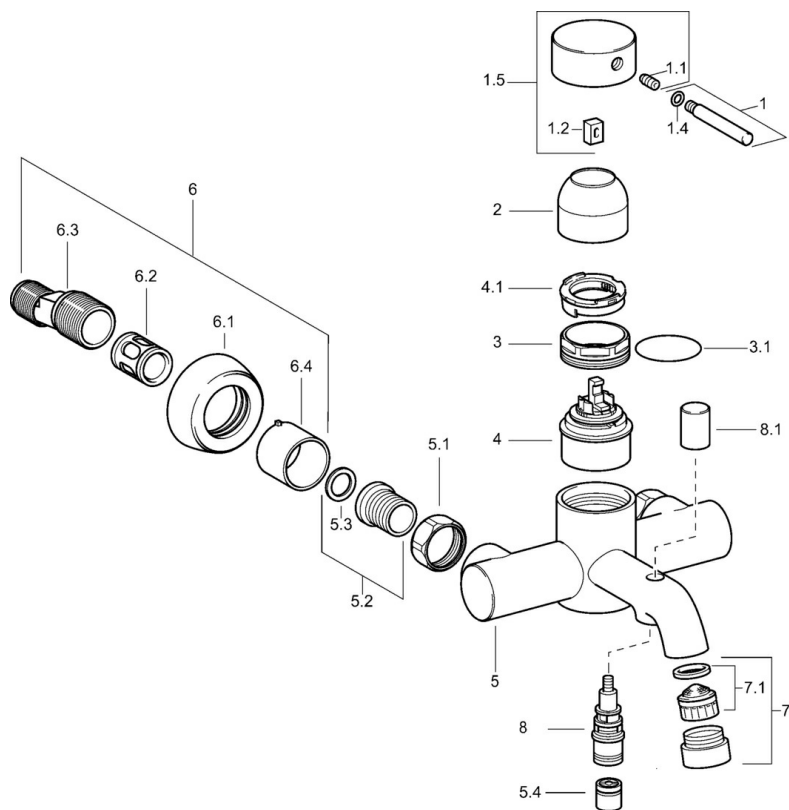


## Technical data

### Technical properties

Hot water supply	max. +80°C
Working pressure	0.5-10 bar
Backflow prevention (EN1717)	EB

## Spare parts



### SP51852101

Name	Code
1 Lever, 60 mm Discontinued	59911882
1.1 Screw, M5x8, SW2.5	59904755
1.2 Bushing	59904778
1.4 O-ring, d 6x1	59912136
1.5 Covering cap Discontinued	59912143
2 Cover Discontinued	59912753
3 Eye screw, M50x1, SW45	59904775
3.1 O-ring, d 43x2.5	59911166
4 Cartridge, 4.8 eco	59904601
4.1 Hot water limiter	59904759
5.1 Connection nut, G3/4, AF30	59902230
5.2 Seat, G1/2, L, WAF10	59904618
5.3 Retaining ring, 23.9x15.2x2	59902689
5.4 Non-return valve	59905714
6.1 Cover flange	59912652
6.2 Silencer	59904792
6.3 Eccentric connector, G3/4xG1/2, DN15	59910254
6.4 Cover sleeve	59912651
7 Fixing part Discontinued	59912704
7.1 Aerator, M28x1 C Discontinued	59902089
8 Diverter	59912706
8.1 Knob Discontinued	59912705