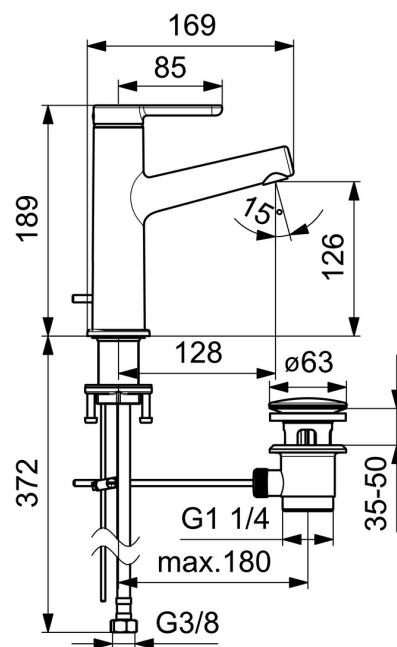
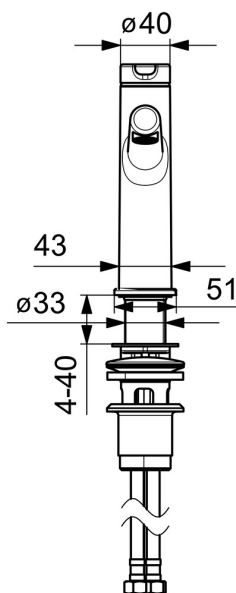
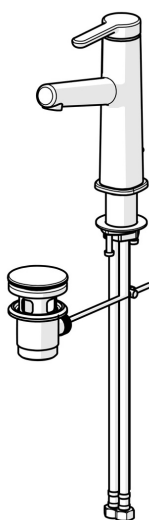


EAN: 4057304006449  
[static.hansa.com/51832283](https://static.hansa.com/51832283)



one-hole single-lever basin mixer, DN 15

- Washbasin
- Single-lever
- Deck mounted
- Chrome
- Fixed spout
- PCA® - constant flow rate regardless of pressure variations, Hidden aerator
- Hot/Cold symbols, Single operating lever/handle
- Pop-up waste with draw-rod
- ø 25 mm ceramic cartridge for flow and temperature control
- Flexible inlet pipes
- Inner body made of DZR brass



Technical data

Flow properties

Flow-rate at 3 bar (with flow controller)	6.0 l/min
Pressure loss with flow (0.1 l/s)	2 bar

Technical properties

DN-size (nominal dimension)	DN15
Hot water supply	max. +70°C
Working pressure	0.5-10 bar
Connection size	G3/8
Projection	128 mm
Backflow prevention (EN1717)	AA
Material	Brass

Regulations

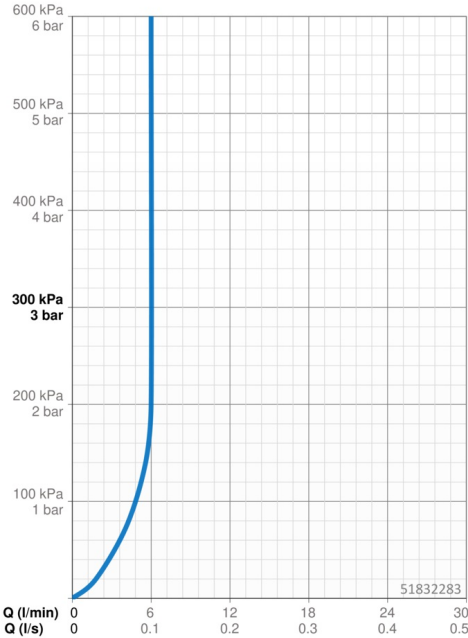
EN standard	EN 817
Noise class	I (ISO 3822)

Approvals and Declarations

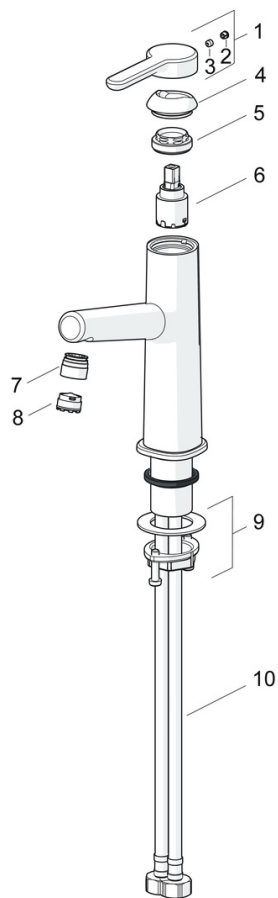
DVGW	DW-6506DL0547
EPD	S-P-06391

Sustainability

EPD module A1 (kg CO2 eq.)	10,61
EPD module A2 (kg CO2 eq.)	0,51
EPD module A3 (kg CO2 eq.)	1,00
EPD module A1-A3 (kg CO2 eq.)	12,13
EPD module A4 (kg CO2 eq.)	0,34
EPD module B7 (kg CO2 eq.)	1854,00
EPD module C2 (kg CO2 eq.)	0,02
EPD module C3 (kg CO2 eq.)	0,02
EPD module C4 (kg CO2 eq.)	0,09
EPD module D (kg CO2 eq.)	-8,62



## Spare parts



### SP51882283

	Name	Code
01	Lever Discontinued	59914637
02	Cover plug	59913762
03	Screw, M5x8, SW2.5	59904755
04	Covering cap	59914638
05	Tightening nut, M32x1, SW24	59913958
06	Cartridge, 2.5	59913914
07	Fitting ring for aerator	59914645
08	Aerator, M18.5x1, TJ	59913366
09	Fixing set	59913371
10	Flexible pipe, L=475, G3/8-M10x1 LH	59914468
10	Flexible pipe, L=470, G1/2-M10x1 LH (518822830037) Discontinued	59914639
N.I.	Pop-up operating rod	59913459
N.I.	Pop-up waste	59911441