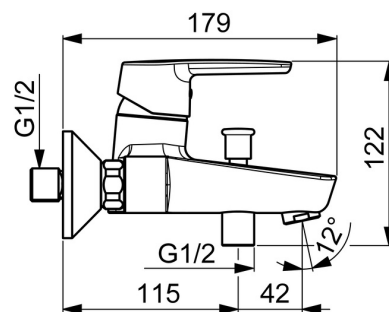
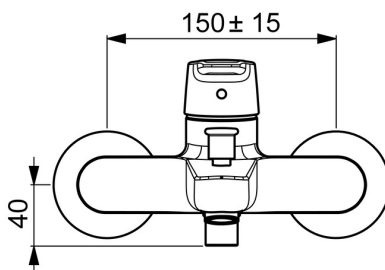
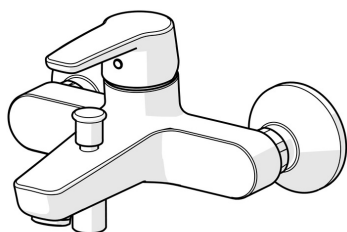


EAN: 4057304002939
static.hansa.com/51442193



- Bathtub & Shower
- Single-lever
- Wall mounted
- Chrome
- Fixed spout
- Standard aerator
- Hot/Cold symbols, Single operating lever/handle
- Pull operated diverter, Automatic reset
- Limitation option for maximum temperature and flow-rate, Adjustable hot water stop (included, retrofittable)
- Non-return valve(s), \varnothing 35 mm ceramic cartridge for flow and temperature control
- Eccentric coupling(s)
- Inner body made of DZR brass



Technical data

Flow properties

Flow-rate at 3 bar

20.4 / 19.2 l/min

Technical properties

DN-size (nominal dimension)

DN15

Hot water supply

max. +80°C

Working pressure

0.5-10 bar

Connection size

G3/4

Installation width

CC150 ± 15 mm

Projection

157 mm

Backflow prevention (EN1717)

EB

Material

Brass

Regulations

EN standard

EN 817

Noise class

I(ISO 3822)

Approvals and Declarations

KIWA

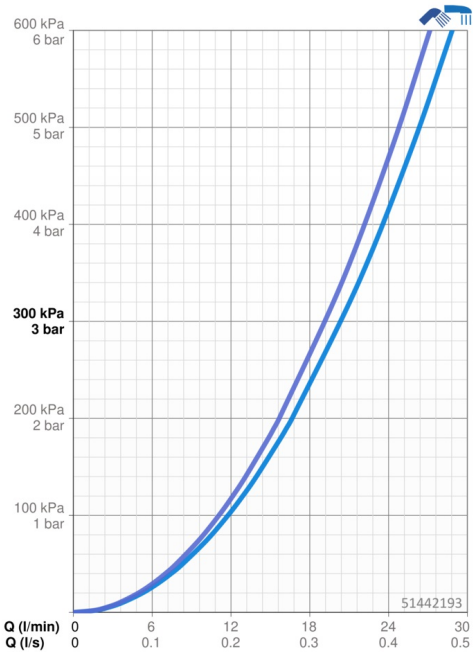
K6116/08

DVGW

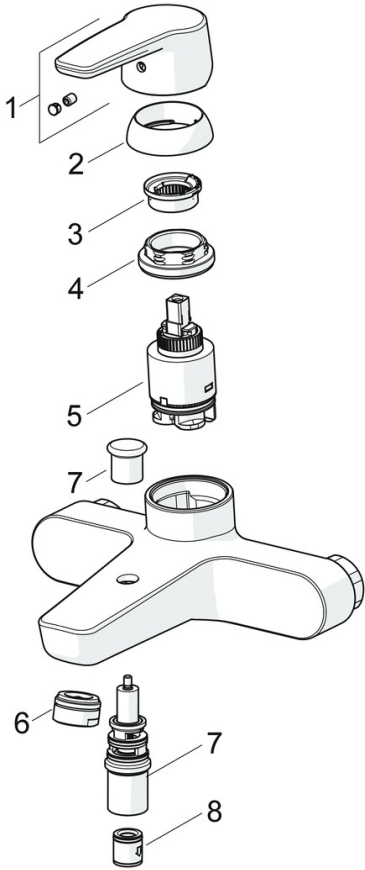
NW-6506BP0361

ABP

PA-IX 38493/IDB



Spare parts



SP51442193

	Name	Code
01	Lever	59914417
02	Covering cap, 33x3 mm	59912504
03	Temperature adjustment limiter	59912325
04	Tightening nut, M40x1	1003409V
05	Cartridge, 3.5 Classic	59913075
06	Aerator, M24x1 D	59911829
07	Diverter	59912706
08	Non-return valve	59905714