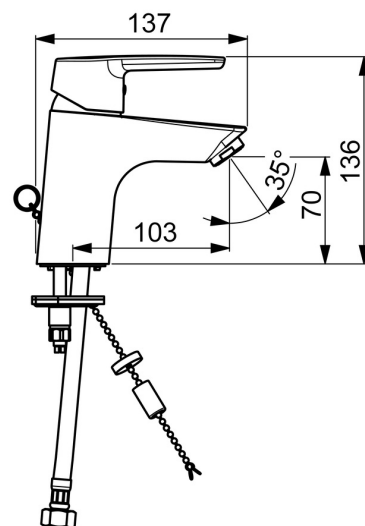
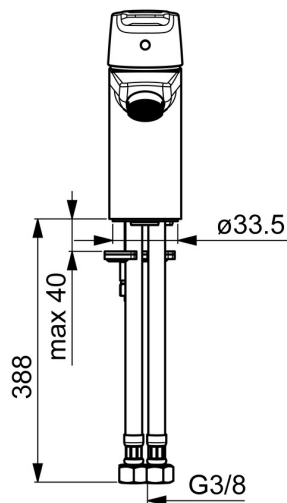
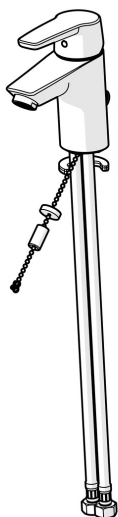


EAN: 4057304002823  
[static.hansa.com/51412293](https://static.hansa.com/51412293)



- Washbasin
- Single-lever
- Deck mounted
- Chrome
- Fixed spout
- PCA® - constant flow rate regardless of pressure variations
- Hot/Cold symbols, Single operating lever/handle
- Chain holder with chain
- Limitation option for maximum temperature and flow-rate, Adjustable hot water stop (included, retrofittable)
- ø 35 mm ceramic cartridge for flow and temperature control
- Flexible inlet pipes
- Inner body made of DZR brass, Rapid installation system
- Without pop-up waste



Technical data

Flow properties

Flow-rate at 3 bar (with flow controller)

6.0 l/min

Technical properties

DN-size (nominal dimension)

DN15

Hot water supply

max. +70°C

Working pressure

0.5-10 bar

Connection size

G3/8

Projection

103 mm

Material

Brass

Regulations

EN standard

EN 817

Noise class

I (ISO3822)

Approvals and Declarations

KIWA

K6116/08

DVGW

NW-6506BP0361

EPD

S-P-06391

Sustainability

EPD module A1 (kg CO2 eq.)

5,62

EPD module A2 (kg CO2 eq.)

0,27

EPD module A3 (kg CO2 eq.)

0,53

EPD module A1-A3 (kg CO2 eq.)

6,42

EPD module A4 (kg CO2 eq.)

0,18

EPD module B7 (kg CO2 eq.)

1854,00

EPD module C2 (kg CO2 eq.)

0,01

EPD module C3 (kg CO2 eq.)

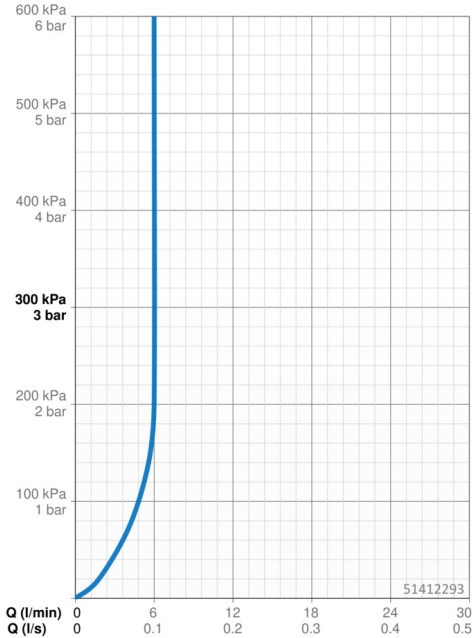
0,01

EPD module C4 (kg CO2 eq.)

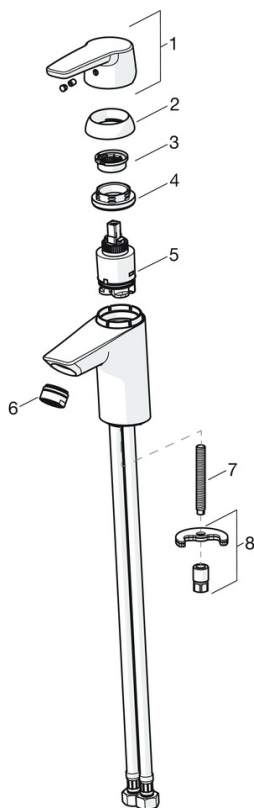
0,05

EPD module D (kg CO2 eq.)

-4,56



## Spare parts



### SP51402293

	Name	Code
01	Lever	59914417
01	Long lever	59914633
02	Covering cap, 33x3 mm	59912504
03	Temperature adjustment limiter	59912325
04	Tightening nut, M40x1	1003409V
05	Cartridge, 3.5 Classic	59913075
06	Aerator, M24x1 A, low pressure	59902692
06	Aerator, M24x1, 6 l/min	59913727
07	Fixing screw, M8x1, L=140	59912474
08	Fixing set	59910749
N.I.	Pop-up waste	59904620
N.I.	Flexible pipe, L=430, G3/8-M10x1	59912515
N.I.	Pop-up operating rod	59914464
N.I.	Pop-up waste, (2019-)	59914764