

EAN: 4015474021662  
[static.hansa.com/51119101](https://static.hansa.com/51119101)



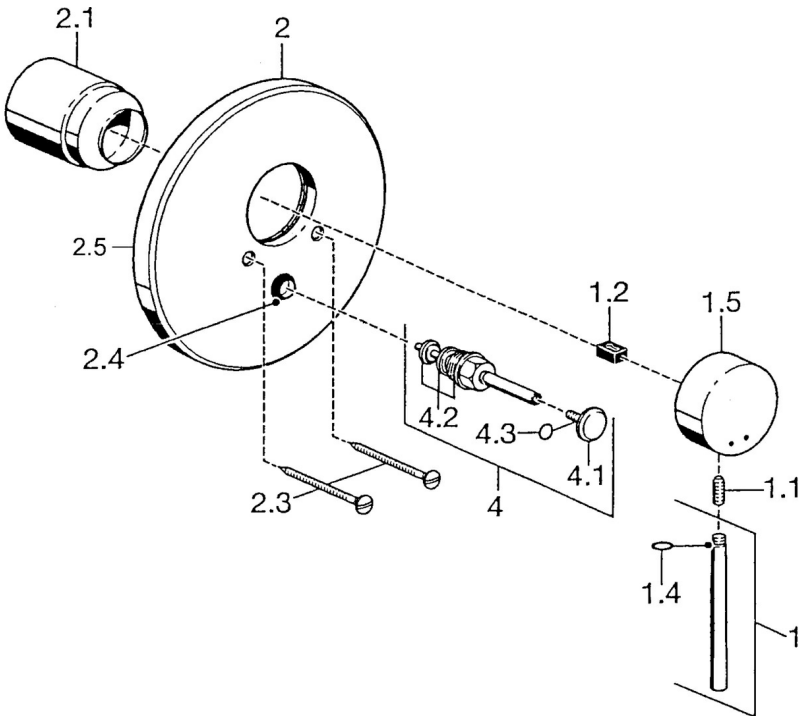
- Bathtub & Shower
  - Trim Kit, Single-lever
  - Concealed wall mounting
- Chrome
  - Round rosette

Technical data

Technical properties

Hot water supply	max. +80°C
Working pressure	0.5-10 bar

Spare parts



SP51119101

	Name	Code
1	Lever, 80 mm Discontinued	59912122
1.1	Screw, M5x8, SW2.5	59904755
1.2	Bushing	59904778
1.4	O-ring, d 6x1	59912136
1.5	Covering cap Discontinued	59912143
2	Cover plate Discontinued	59912125
2.1	Covering cap	59904820
2.3	Screw, M5x65	59904847
2.4	Flow limiting cap	59904846
4	Diverter	59911156
4.2	Sealing kit	59904791
4.3	O-ring, d 4x1	59902331
N.I.	Raising kit, 20 mm	59904983