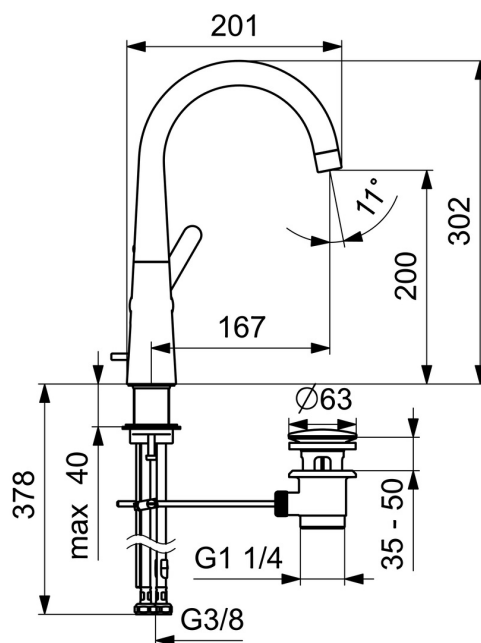
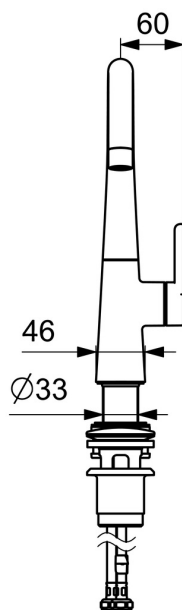
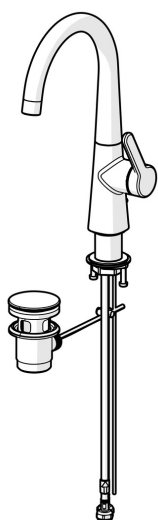


EAN: 4057304015083  
[static.hansa.com/51032293](https://static.hansa.com/51032293)



- Washbasin
- Single-lever, side operated
- Deck mounted
- Chrome
- Swivel spout, Swivel range limiting option
- PCA® - constant flow rate regardless of pressure variations
- Single operating lever/handle, Hot/Cold symbols
- Pop-up waste with draw-rod
- $\varnothing$  25 mm ceramic cartridge for flow and temperature control
- Flexible inlet pipes



Technical data

Flow properties

Flow-rate at 3 bar (with flow controller)

6.0 l/min

Technical properties

DN-size (nominal dimension)

DN15

Hot water supply

max. +70°C

Working pressure

0.5-10 bar

Connection size

G3/8

Projection

167 mm

Backflow prevention (EN1717)

AA

Material

Brass

Regulations

EN standard

EN 817

Noise class

I (ISO 3822)

Approvals and Declarations

DVGW

DW-6506DL0547

EPD

S-P-06391

Sustainability

EPD module A1 (kg CO2 eq.)

11,25

EPD module A2 (kg CO2 eq.)

0,54

EPD module A3 (kg CO2 eq.)

1,06

EPD module A1-A3 (kg CO2 eq.)

12,85

EPD module A4 (kg CO2 eq.)

0,36

EPD module B7 (kg CO2 eq.)

1854,00

EPD module C2 (kg CO2 eq.)

0,02

EPD module C3 (kg CO2 eq.)

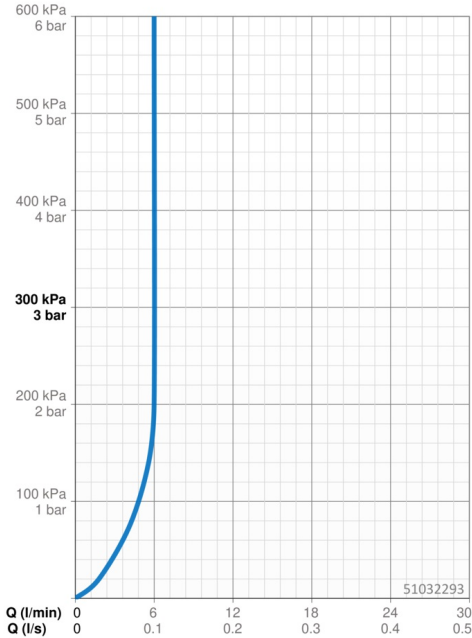
0,03

EPD module C4 (kg CO2 eq.)

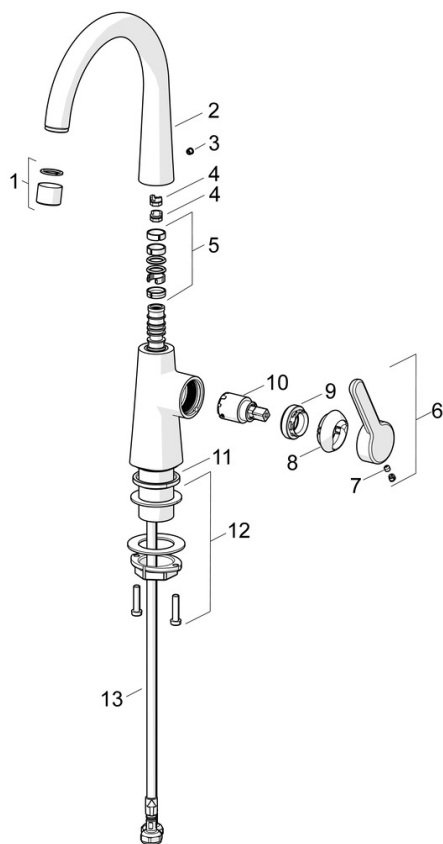
0,10

EPD module D (kg CO2 eq.)

-9,14



## Spare parts



### SP51492293

	Name	Code
01	Aerator, 6 l/min	59914428
02	High spout Discontinued	1007425V
02	High spout	1013626V
03	Cover plug	59913762
04	Spout overturning stopper, 60° /0°	59914264
04	Spout overturning stopper, 120° Discontinued	59914429
05	Sealing kit for spout	59914431
06	Lever Discontinued	59914640
07	Screw, M5x8, SW2.5	59904755
08	Covering cap	59914638
09	Tightening nut, M32x1, SW24	59913958
10	Cartridge, 2.5	59913914
11	Bottom seal	59914650
12	Fixing set	59913371
13	Flexible pipe, L=430, M8x1-G3/8 LH Discontinued	59914466