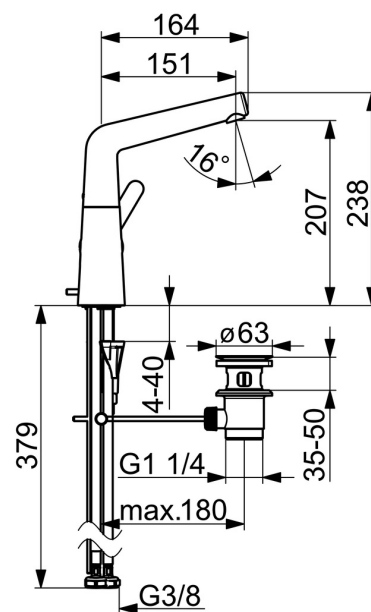
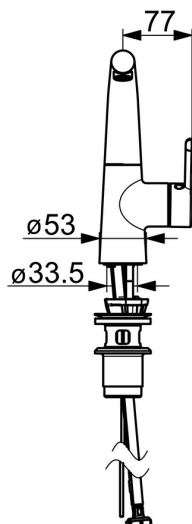
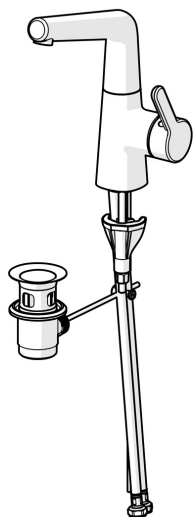


EAN: 4057304006388  
[static.hansa.com/51032283](https://static.hansa.com/51032283)



one-hole single-lever basin mixer, DN 15

- Washbasin
- Single-lever, side operated
- Deck mounted
- Chrome
- Swivel spout, Swivel range limiting option
- PCA® - constant flow rate regardless of pressure variations, Hidden aerator
- Hot/Cold symbols, Single operating lever/handle
- Pop-up waste with draw-rod
- ø 40 mm ceramic cartridge for flow and temperature control
- Flexible inlet pipes
- Inner body made of DZR brass, 3S-installation system for safe and simple mounting



Technical data

Flow properties

Flow-rate at 3 bar (with flow controller)	6.0 l/min
Pressure loss with flow (0.1 l/s)	1 bar

Technical properties

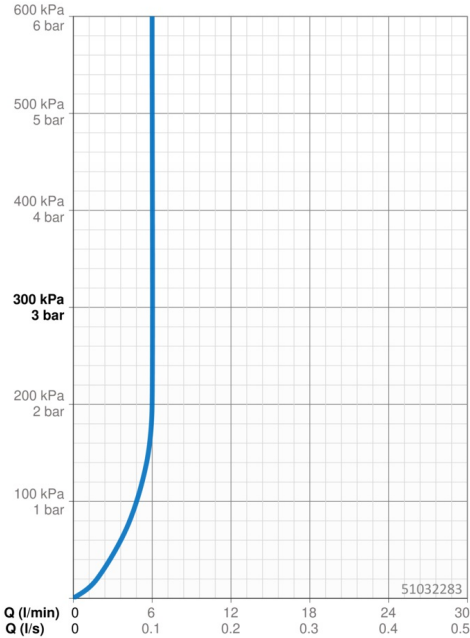
DN-size (nominal dimension)	DN15
Hot water supply	max. +70°C
Working pressure	0.5-10 bar
Connection size	G3/8
Projection	151 mm
Backflow prevention (EN1717)	AA
Material	Brass

Regulations

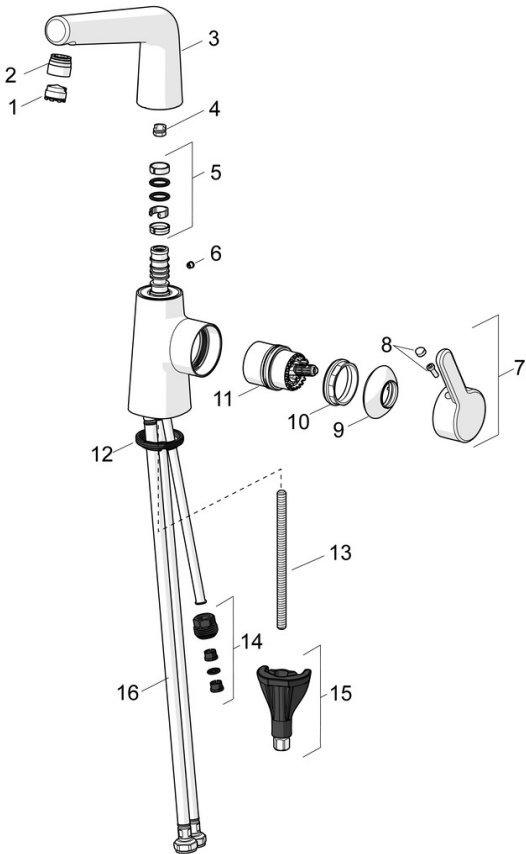
EN standard	EN 817
Noise class	I (ISO 3822)

Approvals and Declarations

DVGW	DW-6506DL0547
------	---------------



Spare parts



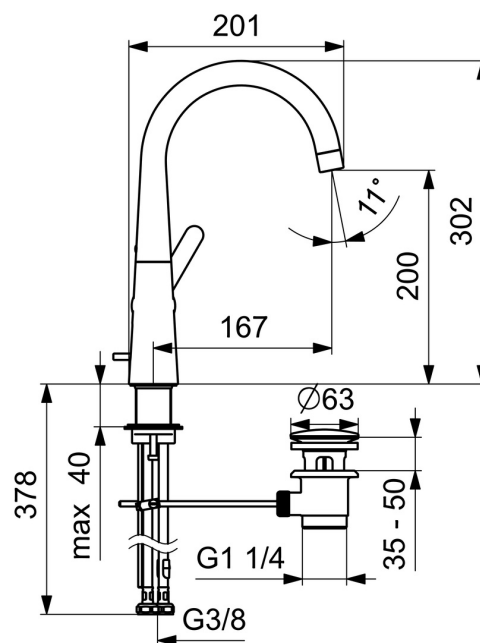
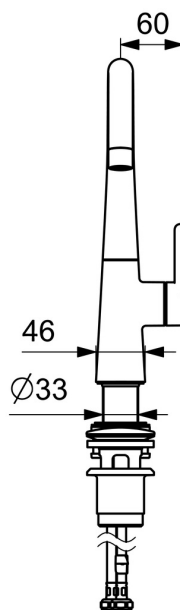
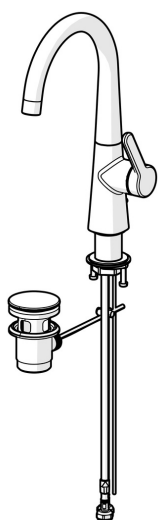
SP51032283

	Name	Code
01	Aerator, M18.5x1, TJ	59913366
02	Fitting ring for aerator	59914645
03	Spout	1013094V
03	Spout Discontinued	59914651
04	Spout overturning stopper, 60° /0°	59914264
04	Spout overturning stopper, 120° Discontinued	59914429
05	Sealing kit	59914263
06	Cover plug	59913762
07	Lever	59914652
08	Symbol plug	59914573
09	Covering cap	59914649
10	Tightening nut, M42x1.5, SW 38	59914128
11	Cartridge	59914665
12	Bottom seal	59914591
13	Fixing screw, M8x1, L=130	59914474
14	Nipple Discontinued	59914133
15	Fixing set	59914475
16	Flexible pipe, L=430, G3/8-M10x1, DN8 LH	59914653
N.I.	Pop-up waste	59911441
N.I.	Pop-up operating rod	59913459

EAN: 4057304015083  
[static.hansa.com/51032293](https://static.hansa.com/51032293)



- Washbasin
- Single-lever, side operated
- Deck mounted
- Chrome
- Swivel spout, Swivel range limiting option
- PCA® - constant flow rate regardless of pressure variations
- Single operating lever/handle, Hot/Cold symbols
- Pop-up waste with draw-rod
- $\varnothing$  25 mm ceramic cartridge for flow and temperature control
- Flexible inlet pipes



Technical data

Flow properties

Flow-rate at 3 bar (with flow controller)	6.0 l/min
---	-----------

Technical properties

DN-size (nominal dimension)	DN15
Hot water supply	max. +70°C
Working pressure	0.5-10 bar
Connection size	G3/8
Projection	167 mm
Backflow prevention (EN1717)	AA
Material	Brass

Regulations

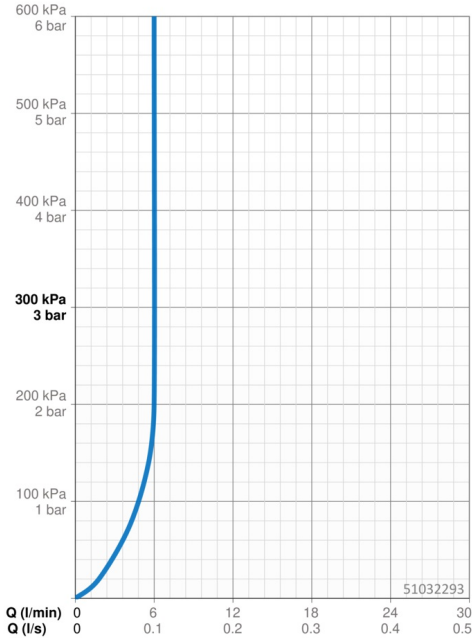
EN standard	EN 817
Noise class	I (ISO 3822)

Approvals and Declarations

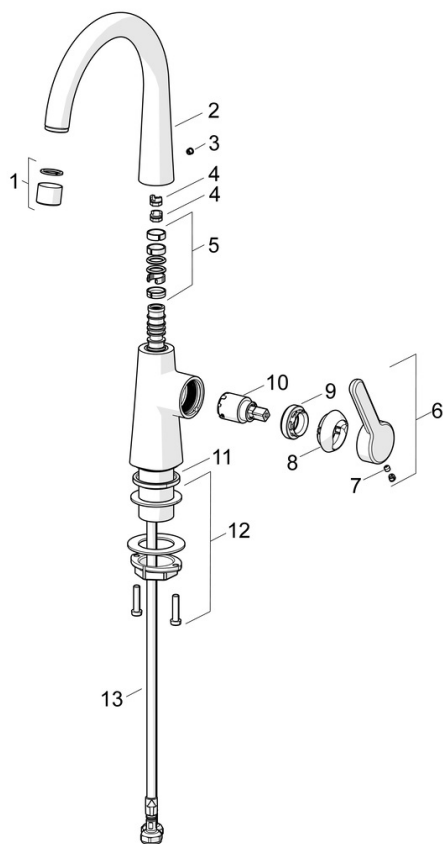
DVGW	DW-6506DL0547
EPD	S-P-06391

Sustainability

EPD module A1 (kg CO2 eq.)	11,25
EPD module A2 (kg CO2 eq.)	0,54
EPD module A3 (kg CO2 eq.)	1,06
EPD module A1-A3 (kg CO2 eq.)	12,85
EPD module A4 (kg CO2 eq.)	0,36
EPD module B7 (kg CO2 eq.)	1854,00
EPD module C2 (kg CO2 eq.)	0,02
EPD module C3 (kg CO2 eq.)	0,03
EPD module C4 (kg CO2 eq.)	0,10
EPD module D (kg CO2 eq.)	-9,14



## Spare parts



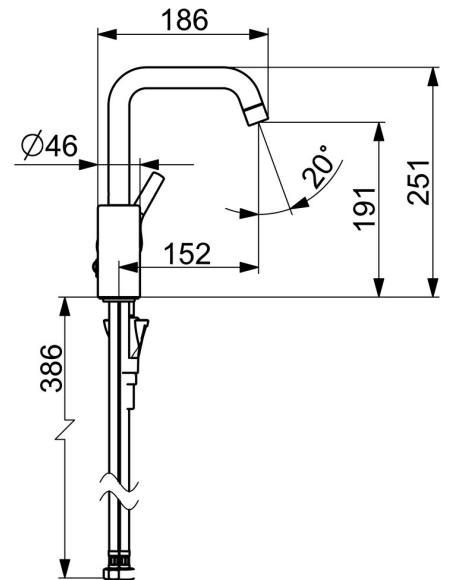
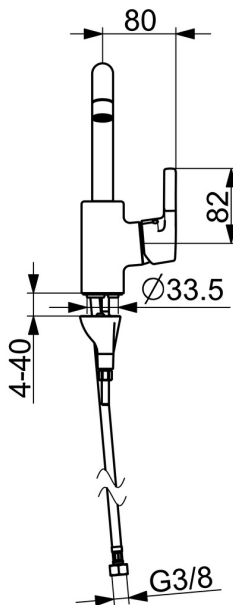
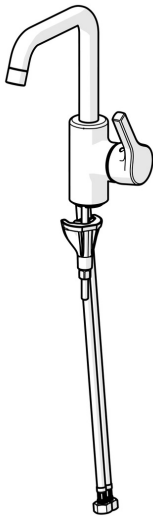
### SP51492293

	Name	Code
01	Aerator, 6 l/min	59914428
02	High spout Discontinued	1007425V
02	High spout	1013626V
03	Cover plug	59913762
04	Spout overturning stopper, 60° / 0°	59914264
04	Spout overturning stopper, 120° Discontinued	59914429
05	Sealing kit for spout	59914431
06	Lever Discontinued	59914640
07	Screw, M5x8, SW2.5	59904755
08	Covering cap	59914638
09	Tightening nut, M32x1, SW24	59913958
10	Cartridge, 2.5	59913914
11	Bottom seal	59914650
12	Fixing set	59913371
13	Flexible pipe, L=430, M8x1-G3/8 LH Discontinued	59914466

EAN: 4057304012037  
[static.hansa.com/56432203](https://static.hansa.com/56432203)



- Washbasin
- Single-lever, side operated
- Deck mounted
- Chrome
- Swivel spout, Swivel range limiting option
- PCA® - constant flow rate regardless of pressure variations
- Hot/Cold symbols, Single operating lever/handle
- Limitation option for maximum temperature and flow-rate, Adjustable hot water stop (included, retrofittable)
- ø 35 mm ceramic cartridge for flow and temperature control
- Flexible inlet pipes
- Inner body made of DZR brass, 3S-installation system for safe and simple mounting
- Without pop-up waste



Technical data

Flow properties

Flow-rate at 3 bar (with flow controller)

6.0 l/min

Technical properties

DN-size (nominal dimension)

DN15

Hot water supply

max. +80°C

Working pressure

0.5-10 bar

Connection size

G3/8

Projection

152 mm

Backflow prevention (EN1717)

AA

Material

Brass

Regulations

EN standard

EN 817

Noise class

I (ISO3822)

Approvals and Declarations

DVGW

DW-6506CS0548

ABP

P-IX 38495/IA

EPD

S-P-06391

Sustainability

EPD module A1 (kg CO2 eq.)

8,71

EPD module A2 (kg CO2 eq.)

0,42

EPD module A3 (kg CO2 eq.)

0,82

EPD module A1-A3 (kg CO2 eq.)

9,95

EPD module A4 (kg CO2 eq.)

0,28

EPD module B7 (kg CO2 eq.)

1854,00

EPD module C2 (kg CO2 eq.)

0,02

EPD module C3 (kg CO2 eq.)

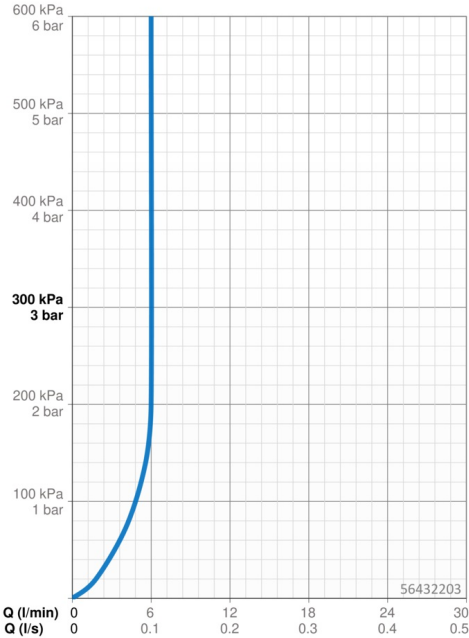
0,02

EPD module C4 (kg CO2 eq.)

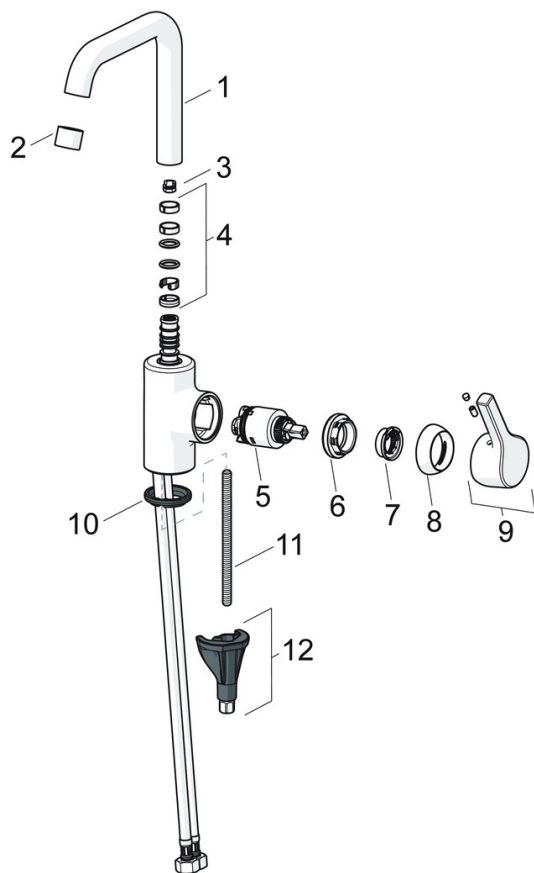
0,07

EPD module D (kg CO2 eq.)

-7,08



## Spare parts



### SP56432203

	Name	Code
01	Spout	59914427
02	Aerator, 6 l/min	59914428
03	Spout overturning stopper, 60° / 0°	59914264
03	Spout overturning stopper, 120° Discontinued	59914429
04	Sealing kit for spout	59914431
05	Cartridge, 3.5 Classic	59913075
06	Tightening nut, M40x1	1003409V
07	Temperature adjustment limiter	59912325
08	Covering cap, 33x3 mm	59912504
09	Lever	59914713
10	Bottom seal	59914591
11	Fixing screw, M8x1, L=130	59914474
12	Fixing set	59914475