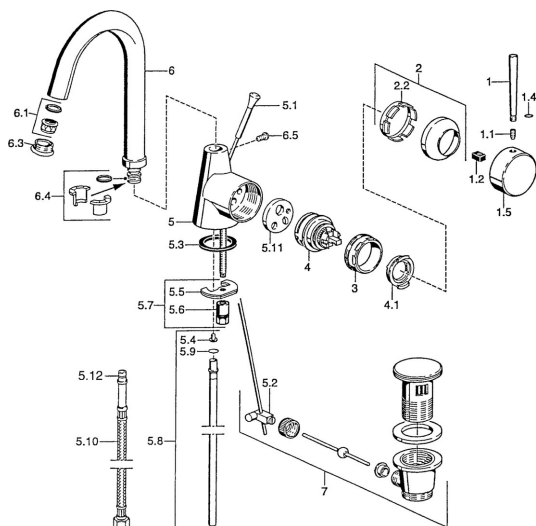


EAN: 4015474005556
static.hansa.com/51032100



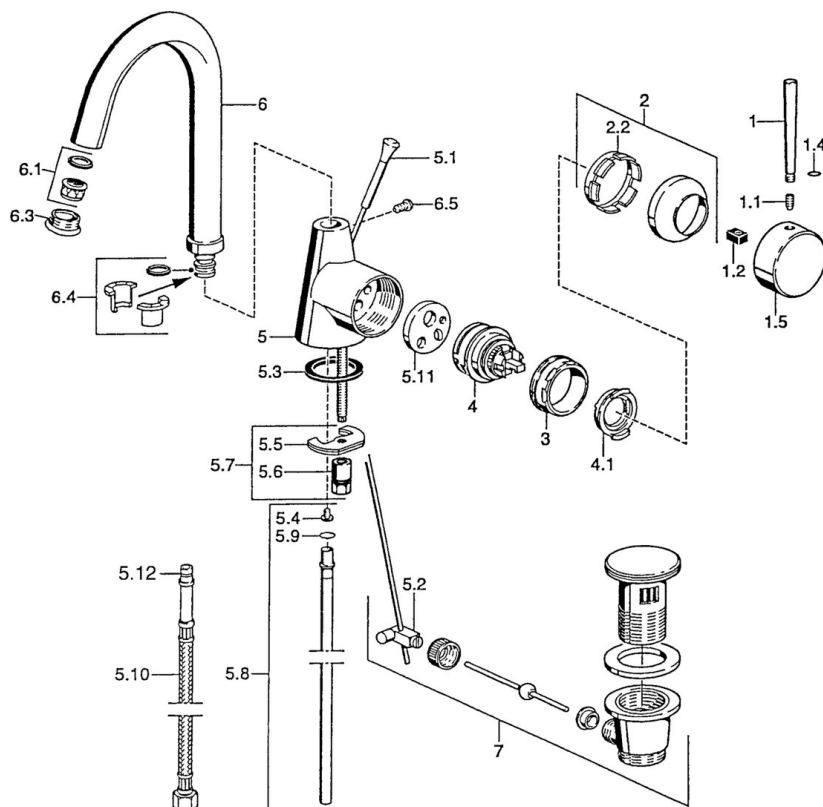
- Washbasin
- Single-lever, side operated
- Deck mounted
- Chrome

Technical data

Technical properties

| | |
|------------------|------------|
| Hot water supply | max. +80°C |
| Working pressure | 0.5-10 bar |
| Material | Brass |

Spare parts



SP51032101

| | Name | Code |
|------|---|----------|
| 1 | Lever, L=60 Blue Discontinued | 59912148 |
| 1 | Lever, 60 mm Discontinued | 59911882 |
| 1 | Lever, 80 mm Discontinued | 59912122 |
| 1.1 | Screw, M5x8, SW2.5 | 59904755 |
| 1.2 | Bushing | 59904778 |
| 1.4 | O-ring, d 6x1 | 59912136 |
| 1.5 | Cap Discontinued | 59911885 |
| 2 | Covering cap | 59906563 |
| 2.2 | Fixing sleeve | 59906695 |
| 3 | Eye screw, M50x1, SW45 | 59904775 |
| 4 | Cartridge, 4.8 eco | 59904601 |
| 4.1 | Hot water limiter | 59904759 |
| 5.1 | Pop-up operating rod Discontinued | 59911887 |
| 5.2 | Swivel joint | 59904624 |
| 5.3 | Gasket, 37x48x3.5 | 59911422 |
| 5.4 | Attachment clamp Discontinued | 59911416 |
| 5.5 | Fixing plate | 59904765 |
| 5.6 | Screw, M8x1, SW13 | 59904766 |
| 5.7 | Fixing set | 59910749 |
| 5.8 | Pipe, d 10 mm, L=413 | 59911423 |
| 5.9 | O-ring, 9x2 | 59905095 |
| 5.10 | Flexible pipe, L=370, G3/8 Discontinued | 59911626 |
| 5.11 | Adapter Discontinued | 59911894 |
| 6 | Spout, L=145 mm Discontinued | 59911879 |
| 6.1 | Aerator, M22/24 A | 59902081 |
| 6.3 | Aerator, M24x1, (-2002) Discontinued | 59912011 |
| 6.3 | Aerator and key, M24x1, (2002-) | 59912225 |
| 6.4 | Sealing kit | 59911884 |
| 6.5 | Screw, M4x7 | 59902075 |
| 7 | Pop-up waste | 59911441 |