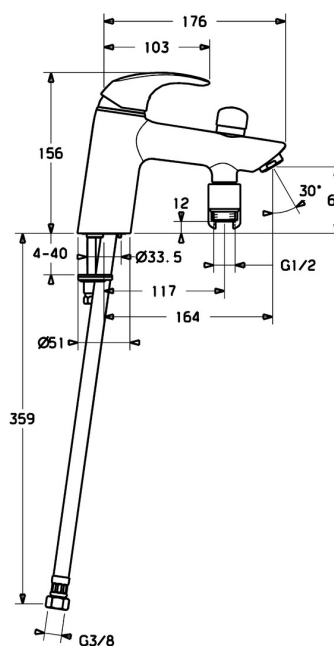
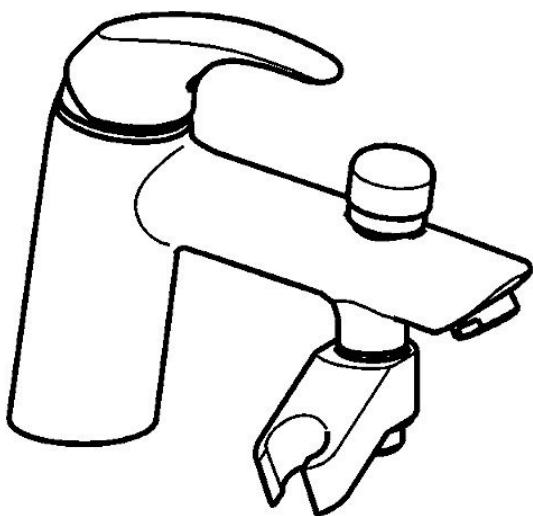


EAN: 4015474238633
static.hansa.com/46372203



- Bathtub & Shower
- Single-lever
- Rim mounted
- Chrome
- Standard aerator
- Hot/Cold symbols, Single operating lever/handle
- Pull operated diverter, Automatic reset
- Limitation option for maximum temperature and flow-rate, Adjustable hot water stop (included, retrofittable)
- Non-return valve(s), \varnothing 35 mm ceramic cartridge for flow and temperature control
- Inner body made of DZR brass, Waterways without nickel coating



Technical data

Flow properties

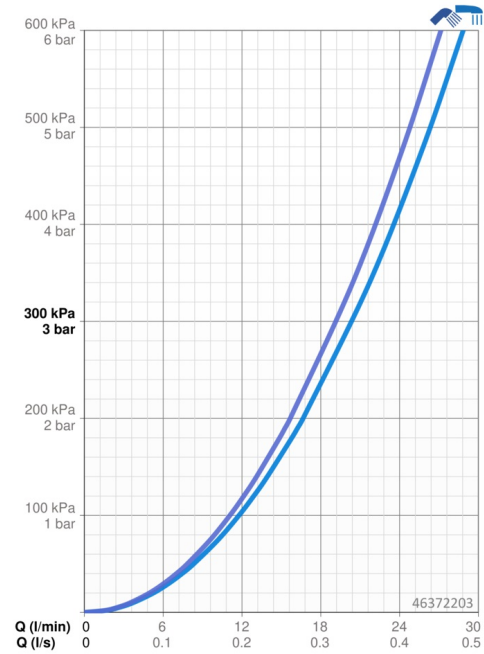
Flow-rate at 3 bar20.4 / 19.2 l/min

Technical properties

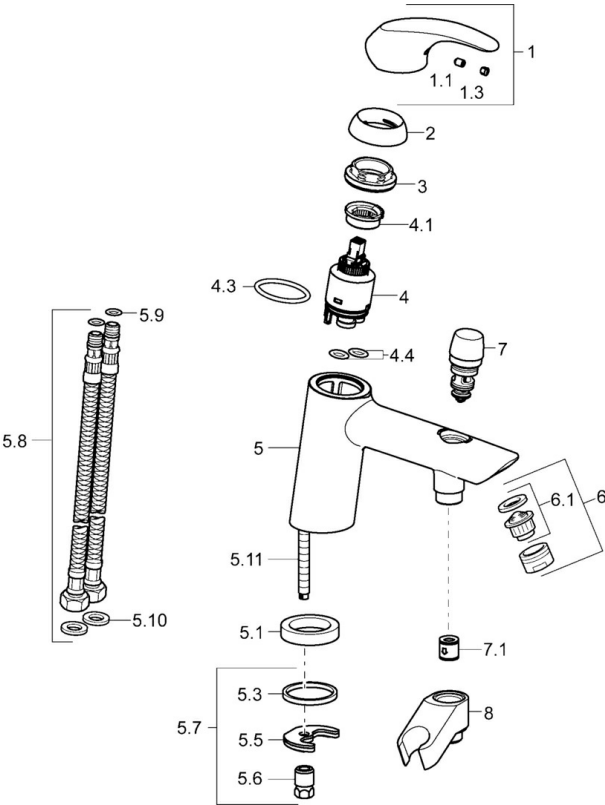
DN-size (nominal dimension)DN15
Hot water supplymax. +80°C
Working pressure0.5-10 bar
Projection164 mm
Backflow prevention (EN1717)EB
MaterialBrass

Regulations

EN standardEN 817



Spare parts



SP46372203

	Name	Code
1	Lever	59913678
1.1	Screw, M5x8, SW2.5	59904755
1.3	Symbol plug Grey	59912112
2	Covering cap, 33x3 mm	59912504
3	Tightening nut, M40x1	1003409V
4	Cartridge, 3.5 Eco	59912324
4	Cartridge, 3.5 Classic	59913075
4.1	Temperature adjustment limiter	59912325
4.3	O-ring, d 28.24x2.62 Discontinued	59912590
4.4	O-ring, d 10.10x1.60 Discontinued	59905072
5.1	Spacer ring Discontinued	59906787
5.3	Gasket, 43x37x3	59912506
5.5	Fixing plate	59904765
5.6	Screw, M8x1, SW13	59904766
5.7	Fixing set	59910749
5.8	Flexible pipe, L=430, G3/8-M10x1	59912515
5.9	O-ring, d 7.65x1.78	59902337
5.10	Gasket, 9.5x14.4x2	59912551
5.11	Fixing screw, M8x1, L=140	59912474
6	Aerator, M24x1 D	59911829
7	Diverter	59912656
7.1	Non-return valve	59905714
8	Holder Discontinued	59912880
N.I.	Key, SW30/34	59912108