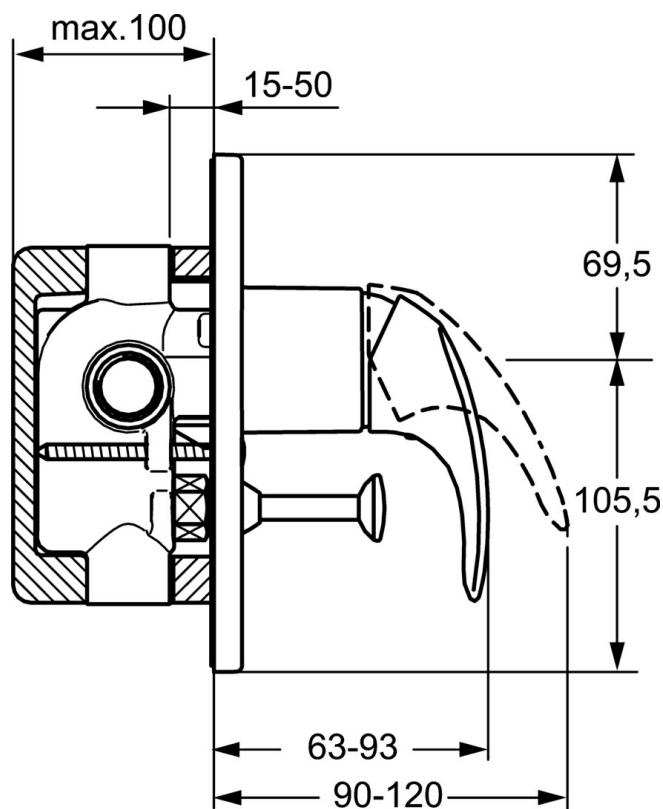
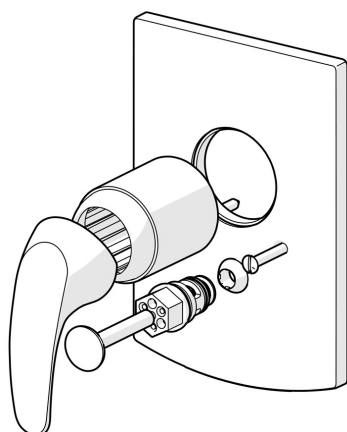


EAN: 4015474252752
static.hansa.com/46167103



- Bathtub & Shower
- Single-lever, Trim Kit
- Concealed wall mounting
- Chrome
- Single operating lever/handle, Hot/Cold symbols
- Pull operated diverter, Automatic reset
- Square rosette



Technical data

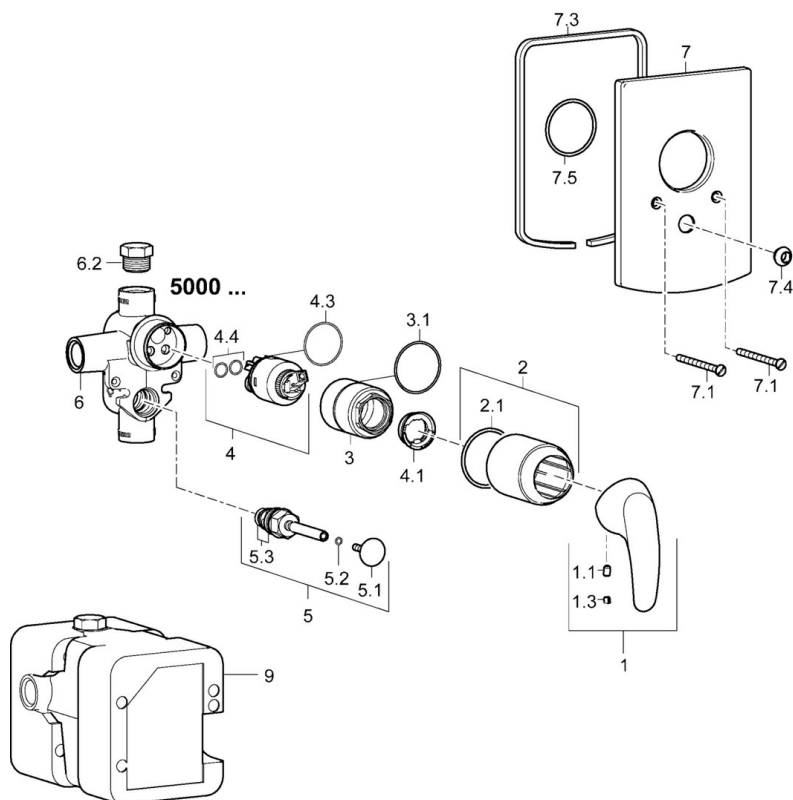
Technical properties

Hot water supply	max. +80°C
Working pressure	0.5-10 bar

Regulations

EN standard	EN 817
-------------	--------

Spare parts



SP46167103

	Name	Code
1	Lever	59913678
1.1	Screw, M5x8, SW2.5	59904755
1.3	Symbol plug Grey	59912112
2	Cover sleeve	59912511
2.1	O-ring, 41x3	59913215
3	Screw sleeve, M38x1	59912115
4	Cartridge, 3.5 Classic	59913075
4	Cartridge, 3.5 Eco	59912324
4.1	Temperature adjustment limiter	59912325
4.3	O-ring, d 28.24x2.62 Discontinued	59912590
4.4	O-ring, d 10.10x1.60 Discontinued	59905072
5	Diverter	59910900
5.2	O-ring, d 4x1	59902331
5.3	Sealing kit	59904791
5.4	Seat	59912229
6.2	Plug, G1/2	59905013
6.3	Plug Discontinued	59905012
6.4	O-ring, d 18x2	59901422
7	Cover flange	59912507
7.1	Screw, M5x65	59904847
7.3	Sealing plates Discontinued	59912121
7.4	Flow limiting cap	59904846
7.5	Gasket, 64.5x47x7 Discontinued	59912509
9	Installation box Discontinued	59904857
N.I.	Raising kit, 20 mm	59912589
N.I.	Key, SW30/34	59912108