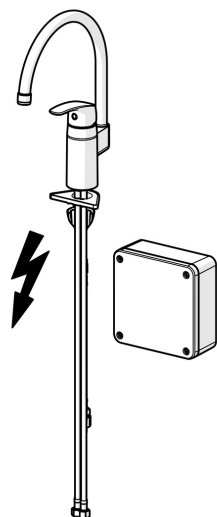


EAN: 4057304014956
static.hansa.com/45302203



- Kitchen
- Single-lever, Low pressure, Bluetooth®
- Deck mounted
- Chrome
- Swivel spout, Swivel range limiting option, Profile construction
- Standard aerator
- Single operating lever/handle, Hot/Cold symbols
- Limitation option for maximum temperature and flow-rate
- ø 40 mm ceramic cartridge for flow and temperature control
- Solenoid valve, External control unit, Power supply
- Flexible inlet pipes
- 3S-installation system for safe and simple mounting, Software settings adjustable via App
- grease without Silicon



Technical data

Flow properties

| | |
|-----------------------------------|------------|
| Eco-flow at 3 bar | 9.0 l/min |
| Flow-rate at 3 bar | 16.2 l/min |
| Pressure loss with flow (0.2 l/s) | 1.7 bar |

Technical properties

| | |
|------------------------------|-------------|
| Hot water supply | max. +70° C |
| Working pressure | 0.5-5 bar |
| Connection size | G3/8 |
| Projection | 178 mm |
| Backflow prevention (EN1717) | AA |
| Material | Brass |

Software settings

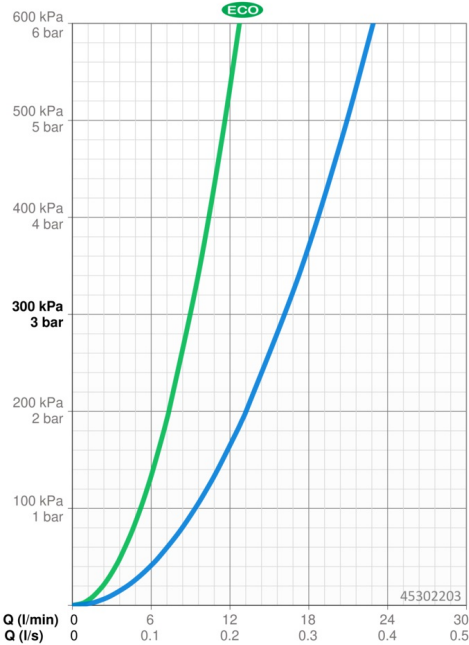
| | |
|------------------------|--------------------|
| Automatic flush | 24 h (off/1-120 h) |
| Automatic flush period | 30 s (1-1800 s) |

Electronic properties

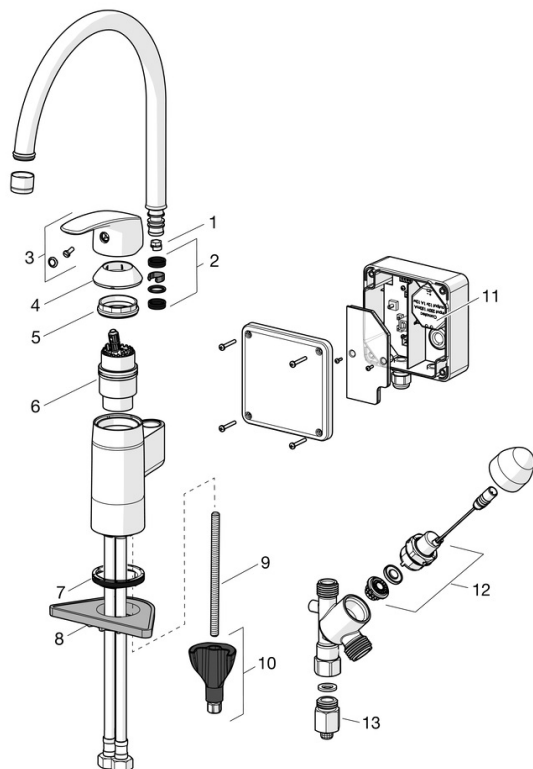
| | |
|-----------------------|---------------|
| Electrical Connection | 230 / 12 V |
| Bluetooth version | 5.x (D060576) |

Regulations

| | |
|------------------|--|
| EU Directives | C € Radio Equipment Directive 2014/53/EU , Low Voltage Directive 2014/35/EU , EMC Directive 2014/30/EU , RoHS Directive 2011/65/EU |
| EN standard | EN 817, ETSI EN 301 489-1 V1.9.2 , ETSI EN 300 328 v2.2.2 , EN 61000-6-1:2007 , EN 61000-6-3:2007+A1:2011+AC:2012 , EN 60335-1:2012+A11+A13+A1+A14+A2+A15:2021, Part 19.11.4 |
| Noise class | I (ISO 3822) |
| Protection class | IP 55 |



Spare parts



SP45302203

| | Name | Code |
|----|--|----------|
| 01 | Spout overturning stopper, 120° Discontinued | 59914429 |
| 01 | Spout overturning stopper, 60° / 0° | 59914264 |
| 02 | Sealing kit for spout | 59914266 |
| 03 | Lever | 59914453 |
| 04 | Covering cap Discontinued | 59914482 |
| 05 | Tightening nut, M42x1.5, SW 38 | 59914128 |
| 06 | Cartridge, low pressure, 4.0 | 59914500 |
| 07 | Bottom seal | 59914591 |
| 08 | Supporting plate | 59910008 |
| 09 | Fixing screw, M8x1, L=130 | 59914474 |
| 10 | Fixing set | 59914475 |
| 11 | Transformer, 230/12 VDC 1A | 64990100 |
| 12 | Solenoid valve complete, 3 V | 59914125 |
| 13 | Flow limiter, 5 L/min | 59914522 |