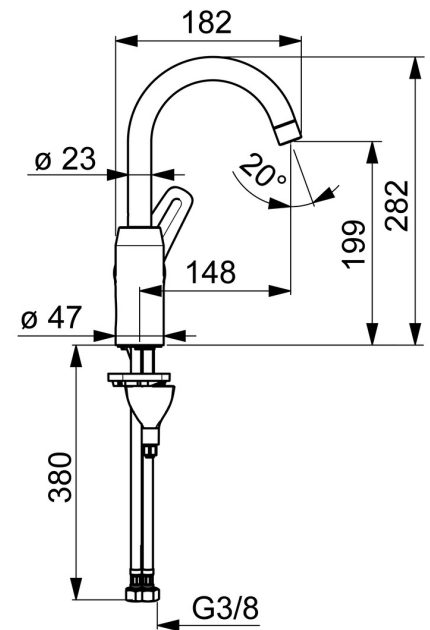
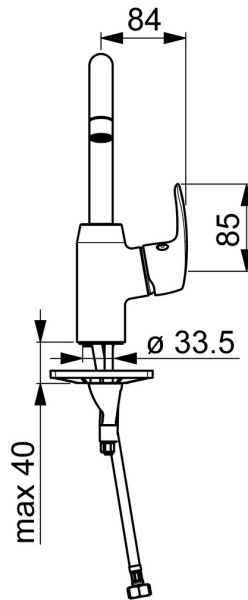
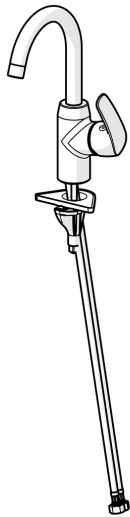


EAN: 4057304003103
static.hansa.com/45092283



- Washbasin
- Single-lever, side operated
- Deck mounted
- Chrome
- Swivel spout, Swivel range limiting option
- Standard aerator
- Hot/Cold symbols, Single operating lever/handle
- Limitation option for maximum temperature and flow-rate, Adjustable hot water stop (included, retrofittable)
- \varnothing 40 mm ceramic cartridge for flow and temperature control
- Flexible inlet pipes
- 3S-installation system for safe and simple mounting, Inner body made of DZR brass
- Without pop-up waste



Technical data

Flow properties

Flow-rate at 3 bar

6.0 l/min

Technical properties

DN-size (nominal dimension)

DN15

Hot water supply

max. +70°C

Working pressure

0.5-10 bar

Connection size

G3/8

Projection

148 mm

Backflow prevention (EN1717)

AA

Material

Brass

Regulations

EN standard

EN 817

Noise class

I (ISO 3822)

Approvals and Declarations

KIWA

K6116/08

DVGW

DW-6506CS0580

ABP

P-IX 29696/IA

Declaration of conformity

DoC

EPD

S-P-06391

Sustainability

EPD module A1 (kg CO2 eq.)

8,31

EPD module A2 (kg CO2 eq.)

0,40

EPD module A3 (kg CO2 eq.)

0,79

EPD module A1-A3 (kg CO2 eq.)

9,50

EPD module A4 (kg CO2 eq.)

0,26

EPD module B7 (kg CO2 eq.)

1854,00

EPD module C2 (kg CO2 eq.)

0,02

EPD module C3 (kg CO2 eq.)

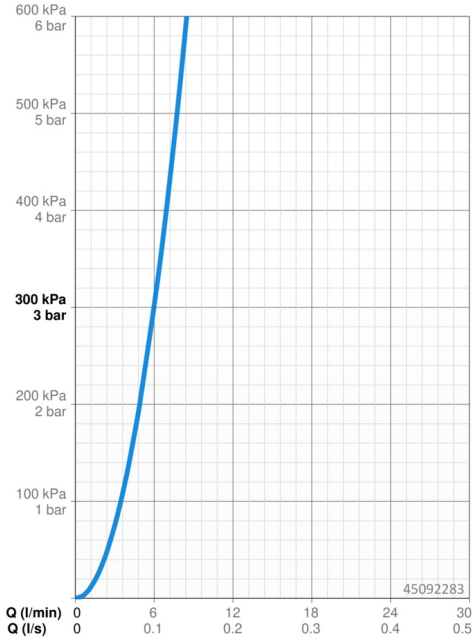
0,02

EPD module C4 (kg CO2 eq.)

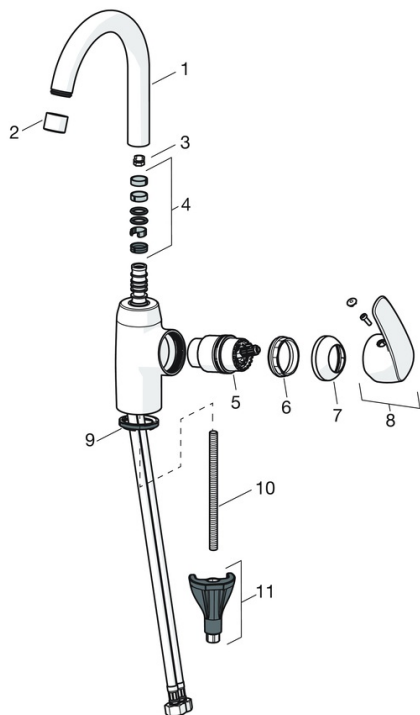
0,07

EPD module D (kg CO2 eq.)

-6,76



Spare parts



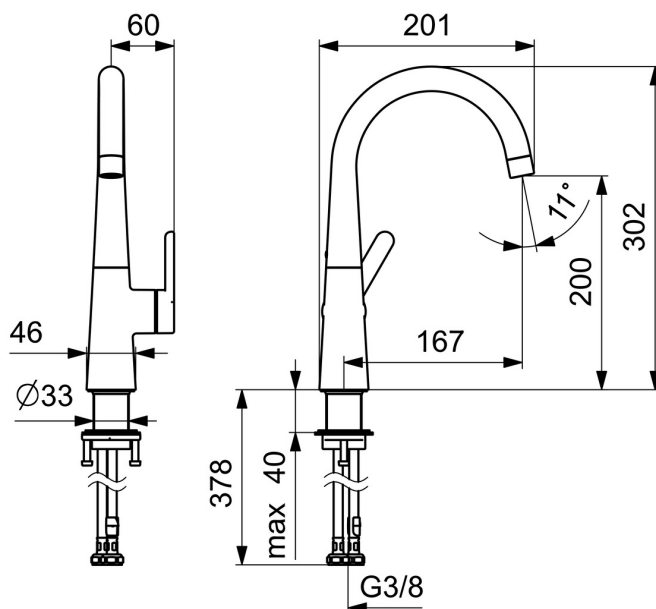
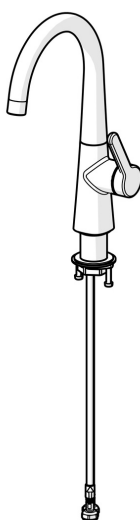
SP45092283

	Name	Code
01	High spout, L=148 Discontinued	59914479
02	Aerator, M22x1 STD CC A	59914436
03	Spout overturning stopper, 60° / 0°	59914264
03	Spout overturning stopper, 120° Discontinued	59914429
04	Sealing kit for spout	59914431
05	Cartridge, 4.0 Classic	59914129
06	Tightening nut, M42x1.5, SW 38	59914128
07	Covering cap Discontinued	59914454
08	Lever Discontinued	59914480
09	Bottom seal	59914591
10	Fixing screw, M8x1, L=130	59914474
11	Fixing set	59914475
N.I.	Pop-up waste, (2019-)	59914764

EAN: 4057304015090
static.hansa.com/51492293



- Washbasin
- Single-lever, side operated
- Deck mounted
- Chrome
- Swivel spout
- PCA® - constant flow rate regardless of pressure variations
- Single operating lever/handle, Hot/Cold symbols
- ø 25 mm ceramic cartridge for flow and temperature control
- Flexible inlet pipes
- Without pop-up waste, Without draw-rod opening



Technical data

Flow properties

Flow-rate at 3 bar (with flow controller)

6.0 l/min

Technical properties

DN-size (nominal dimension)

DN15

Hot water supply

max. +70°C

Working pressure

0.5-10 bar

Connection size

G3/8

Projection

167 mm

Backflow prevention (EN1717)

AA

Material

Brass

Regulations

EN standard

EN 817

Noise class

I (ISO 3822)

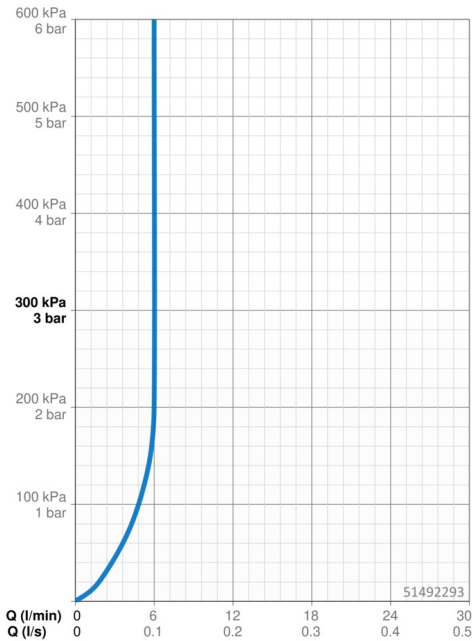
Approvals and Declarations

DVGW

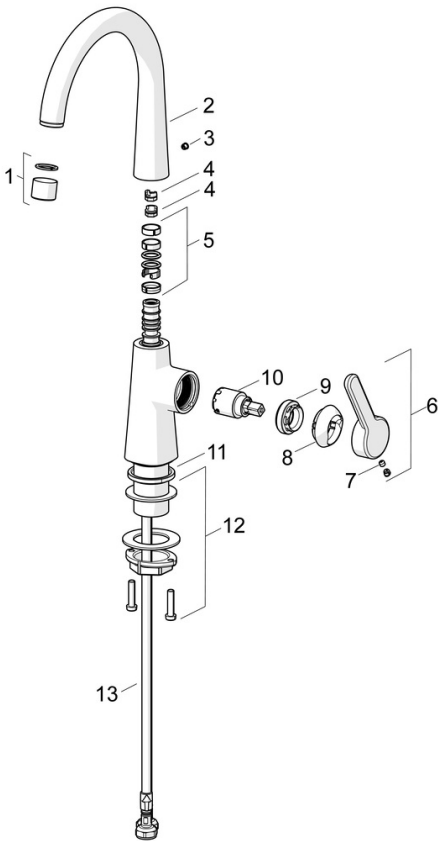
DW-6506DL0547

Declaration of conformity

DoC



Spare parts



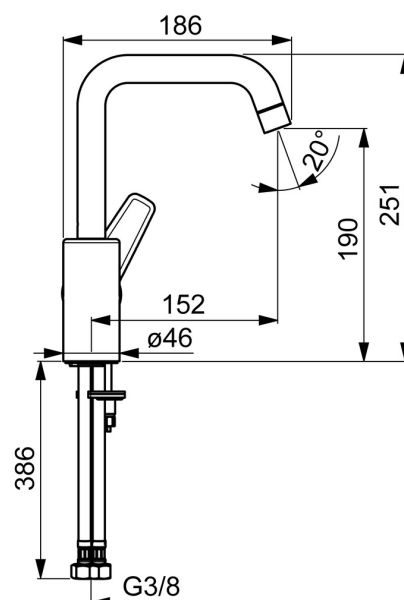
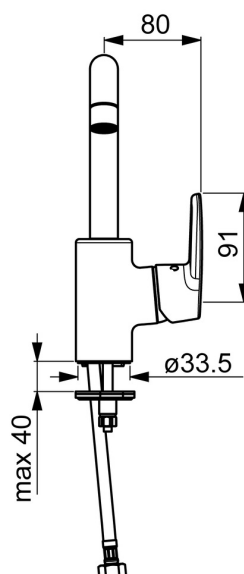
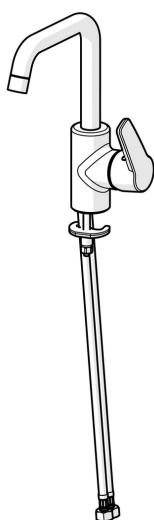
SP51492293

	Name	Code
01	Aerator, 6 l/min	59914428
02	High spout Discontinued	1007425V
02	High spout	1013626V
03	Cover plug	59913762
04	Spout overturning stopper, 60° /0°	59914264
04	Spout overturning stopper, 120° Discontinued	59914429
05	Sealing kit for spout	59914431
06	Lever Discontinued	59914640
07	Screw, M5x8, SW2.5	59904755
08	Covering cap Discontinued	59914638
09	Tightening nut, M32x1, SW24	59913958
10	Cartridge, 2.5	59913914
11	Bottom seal	59914650
12	Fixing set	59913371
13	Flexible pipe, L=430, M8x1-G3/8 LH Discontinued	59914466

EAN: 4057304002960
static.hansa.com/51542293



- Washbasin
- Single-lever, side operated
- Deck mounted
- Chrome
- Swivel spout, Swivel range limiting option
- PCA® - constant flow rate regardless of pressure variations
- Hot/Cold symbols, Single operating lever/handle
- Limitation option for maximum temperature and flow-rate, Adjustable hot water stop (included, retrofittable)
- ø 35 mm ceramic cartridge for flow and temperature control
- Flexible inlet pipes
- Inner body made of DZR brass, Rapid installation system
- Without pop-up waste, Without draw-rod opening



Technical data

Flow properties

Flow-rate at 3 bar (with flow controller)	6.0 l/min
---	-----------

Technical properties

DN-size (nominal dimension)	DN15
Hot water supply	max. +80°C
Working pressure	0.5-10 bar
Connection size	G3/8
Projection	152 mm
Backflow prevention (EN1717)	AA
Material	Brass

Regulations

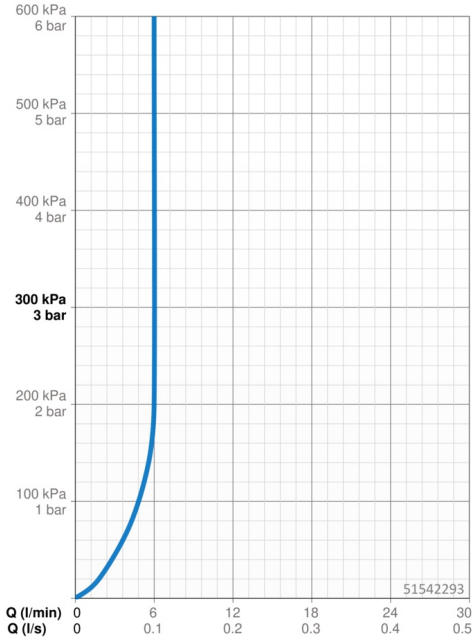
EN standard	EN 817
Noise class	I (ISO3822)

Approvals and Declarations

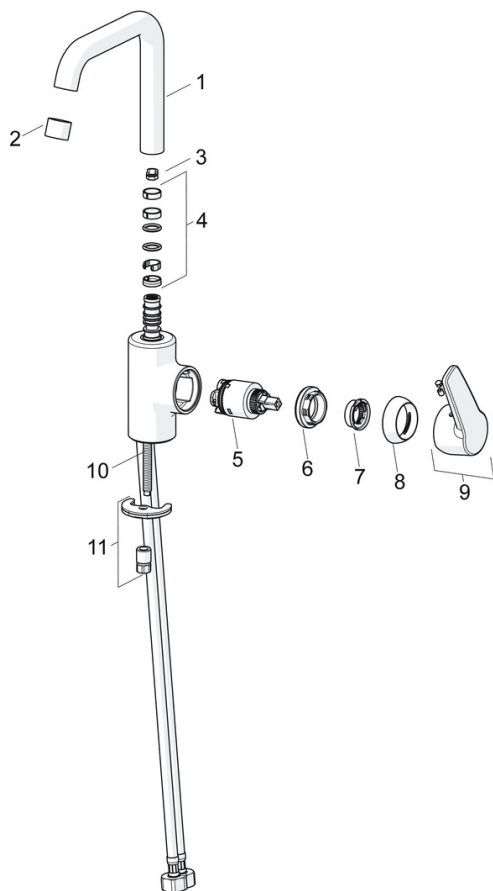
DVGW	NW-6506BP0361
ABP	P-IX 38495/IA
Declaration of conformity	DoC
EPD	S-P-06391

Sustainability

EPD module A1 (kg CO2 eq.)	7,78
EPD module A2 (kg CO2 eq.)	0,37
EPD module A3 (kg CO2 eq.)	0,74
EPD module A1-A3 (kg CO2 eq.)	8,89
EPD module A4 (kg CO2 eq.)	0,25
EPD module B7 (kg CO2 eq.)	1854,00
EPD module C2 (kg CO2 eq.)	0,02
EPD module C3 (kg CO2 eq.)	0,02
EPD module C4 (kg CO2 eq.)	0,07
EPD module D (kg CO2 eq.)	-6,32



Spare parts



SP51542293

	Name	Code
01	Spout	59914427
02	Aerator, 6 l/min	59914428
03	Spout overturning stopper, 60° / 0°	59914264
03	Spout overturning stopper, 120° Discontinued	59914429
04	Sealing kit for spout	59914431
05	Cartridge, 3.5 Classic	59913075
06	Tightening nut, M40x1	1003409V
07	Temperature adjustment limiter	59912325
08	Covering cap, 33x3 mm	59912504
09	Lever Discontinued	59914430
10	Fixing screw, M8x1, L=140	59912474
11	Fixing set	59910749
N.I.	Pop-up waste, (2019-)	59914764