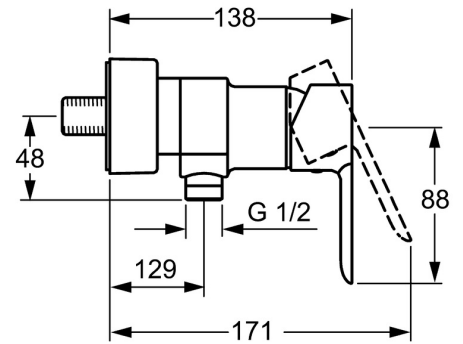
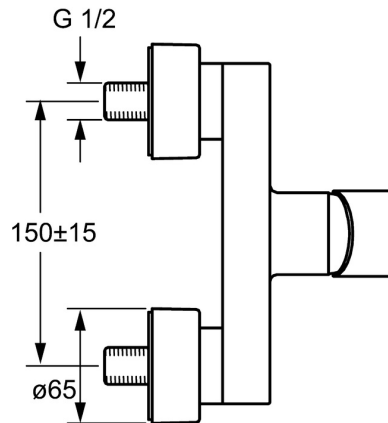
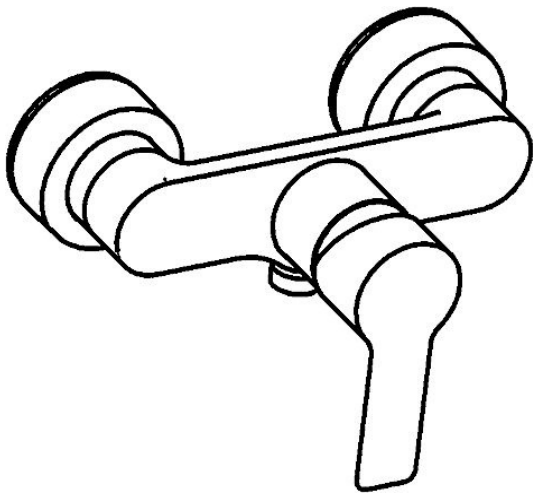


EAN: 4015474249387
static.hansa.com/06670103



- Shower solutions
- Single-lever
- Wall mounted
- Chrome
- Single operating lever/handle, Hot/Cold symbols
- Limitation option for maximum temperature and flow-rate, Adjustable hot water stop (included, retrofittable)
- Non-return valve(s), \varnothing 35 mm ceramic cartridge for flow and temperature control
- Eccentric coupling(s), Cover plate(s), Silencer(s)
- Inner body made of DZR brass
- protected against back-flow in domestic use (according to DIN EN 1717)



Technical data

Flow properties

Flow-rate at 3 bar

21.0 l/min

Technical properties

DN-size (nominal dimension)

DN15

Hot water supply

max. +80°C

Working pressure

0.5-10 bar

Backflow prevention (EN1717)

EB

Regulations

EN standard

EN 817

Noise class

I (ISO 3822)

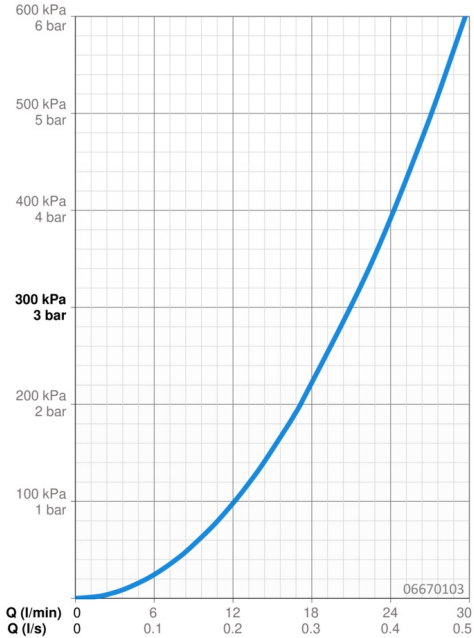
Approvals and Declarations

DVGW

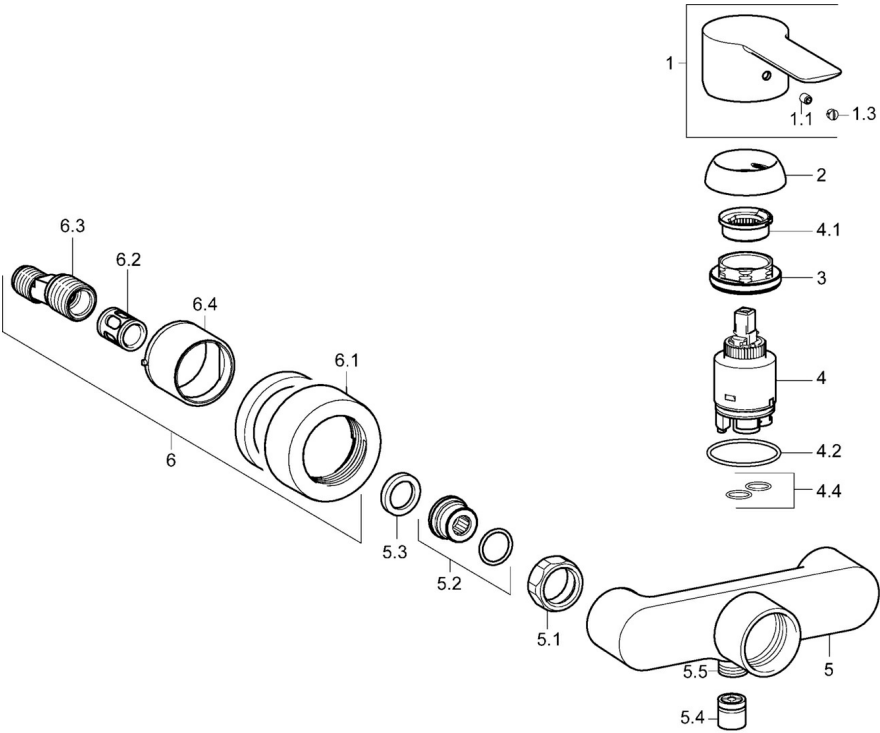
NW-6506CN0315

ABP

PA-IX 38375/IB



Spare parts



SP06670103

| | Name | Code |
|------|--------------------------------------|----------|
| 1 | Lever | 59913650 |
| 1.1 | Screw, M5x8, SW2.5 | 59904755 |
| 1.3 | Symbol plug Grey | 59912112 |
| 2 | Covering cap, 33x3 mm | 59912504 |
| 3 | Tightening nut, M40x1 | 1003409V |
| 4 | Cartridge, 3.5 Eco | 59912324 |
| 4 | Cartridge, 3.5 Classic | 59913075 |
| 4.1 | Temperature adjustment limiter | 59912325 |
| 4.2 | O-ring, d 28.24x2.62 Discontinued | 59912590 |
| 4.4 | O-ring, d 10.10x1.60 Discontinued | 59905072 |
| 5.1 | Connection nut, G3/4, AF30 | 59902230 |
| 5.2 | Connector | 59913400 |
| 5.3 | Retaining ring, 23.9x15.2x2 | 59902689 |
| 5.4 | Non-return valve | 59905714 |
| 5.5 | Thread nipple, G1/2xM18x1 | 59911384 |
| 6.1 | Cover flange | 59913105 |
| 6.2 | Silencer | 59904792 |
| 6.3 | Eccentric connector, G3/4xG1/2, DN15 | 59910254 |
| 6.4 | Cover sleeve | 59913106 |
| N.I. | Key, SW30/34 | 59912108 |