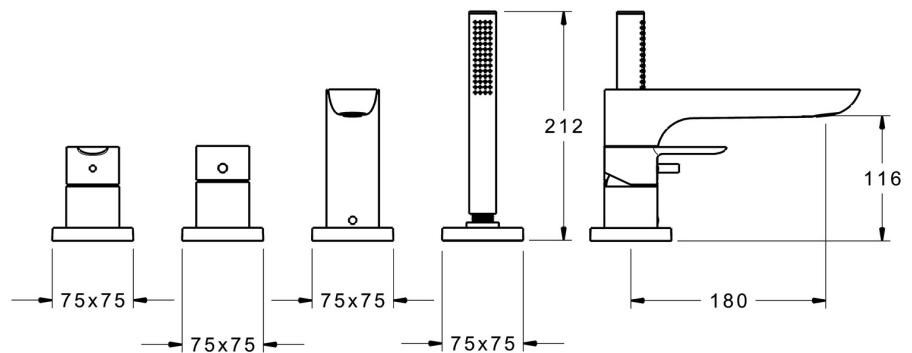
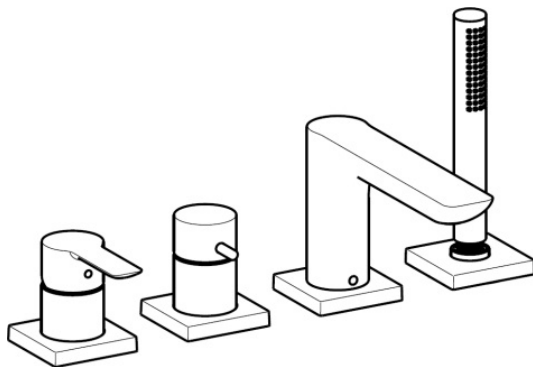


EAN: 4015474277014
static.hansa.com/06442093



- Bathtub & Shower
- Trim Kit, Single-lever
- Rim mounted
- Chrome
- Hidden aerator, Standard aerator
- Single operating lever/handle, Hot/Cold symbols
- Hand shower, Shower hose (1750 mm)
- Intense - invigorating water stream
- Litter filter(s), Non-return valve(s)
- Inner body made of DZR brass
- 1 spray function



Technical data

Flow properties

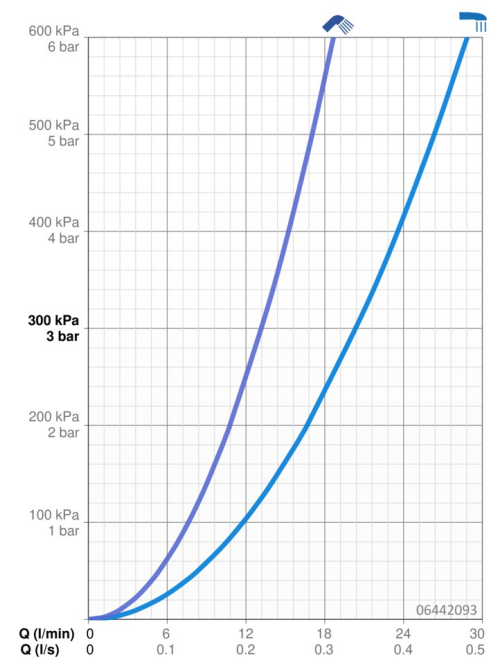
Flow-rate at 3 bar **20.4 / 13.2 l/min**

Technical properties

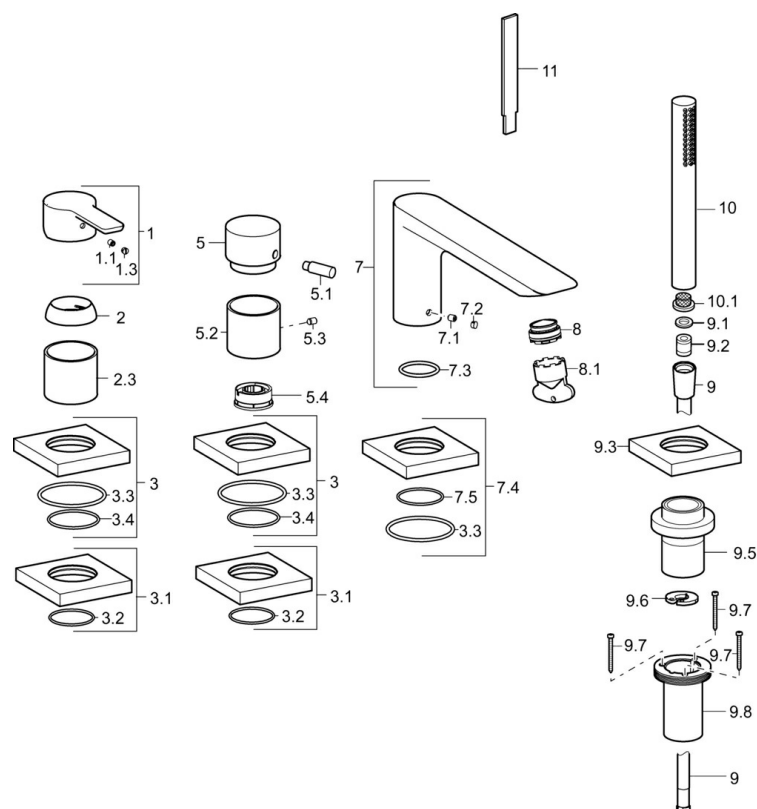
Hot water supply **max. +80°C**
 Working pressure **0.5-10 bar**
 Projection **180 mm**
 Backflow prevention (EN1717) **EB**

Regulations

EN standard **EN 817, EN 1112, EN 1113**



Spare parts



SP06442093

	Name	Code
1	Lever	59913650
1.1	Screw, M5x8, SW2.5	59904755
1.3	Symbol plug Grey	59912112
2	Covering cap, 33x3 mm	59912504
2.3	Cover sleeve	59913275
3	Cover flange, 75x75 mm	59914213
3.1	Cover flange, 75x75 mm	59914214
3.2	O-ring, 49x2	59913279
3.3	O-ring, 60x3	59913280
3.4	O-ring, d 40x2	59911507
5	Diverter knob	59913283
5.1	Pin, M6, 21 mm	59913284
5.2	Cover sleeve	59914215
5.3	Screw, M5x6, SW2.5	59912617
5.4	Flow limiter	59911897
7	Spout, L=180	59913736
7.1	Screw, M6x9.5	59901609
7.2	Cover plug	59911840
7.3	O-ring, d 18x2	59913291
7.4	Cover flange, 75x75 mm	59914211
7.5	O-ring, 41x2 Discontinued	59913281
8	Aerator, M24x1 D, CC	59913720
8.1	Key for aerator, M24x1	59913134
9	Shower hose, L=1750, G1/2-M12x1	59912281
9.1	Gasket ring, d 21x12x2	59912304
9.2	Non-return valve	59905714
9.3	Cover flange, 75x75 mm	59913879
9.5	Holder	59913289
9.6	Disk	59912337
9.7	Screw, M4x45	59912291
9.8	Passing-through bushing	59913288
10	Hand shower	54390100
10.1	Strainer	59906859
11	Tool Discontinued	59912277
N.I.	Raising kit, 30 mm	59913190
N.I.	Raising kit, 30 mm, HM 3.5 (-2015)	59913189
N.I.	Extension screw kit, (2015-)	59914337
N.I.	Hand shower, (-2018) Discontinued	04320200