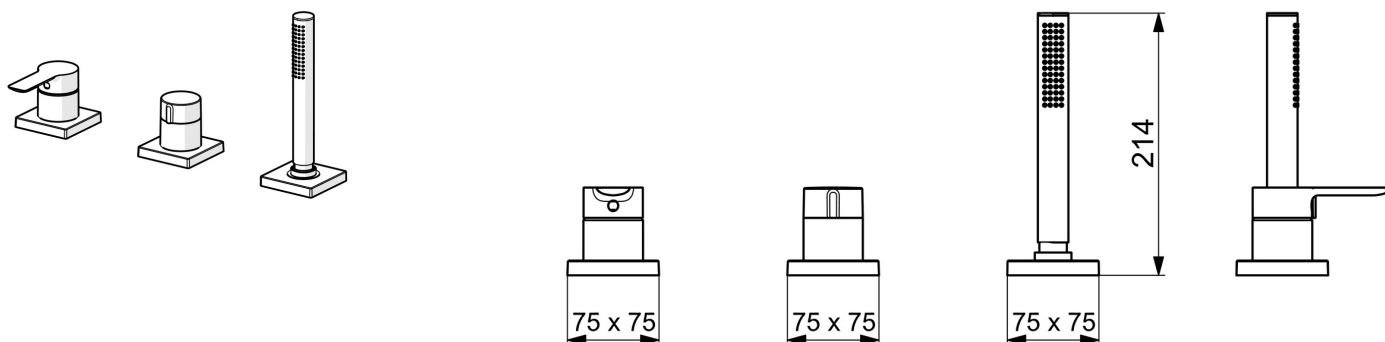


EAN: 4057304014598
static.hansa.com/06439493



- Bathtub & Shower
- Trim Kit, Single-lever
- Rim mounted
- Chrome
- Single operating lever/handle, Hot/Cold symbols
- Hand shower, Shower hose (1750 mm)
- Intense - invigorating water stream
- \varnothing 40 mm ceramic cartridge for flow and temperature control, Non-return valve(s), Litter filter(s)
- Anti-twist hose connector
- Square rosette
- 1 spray function



Technical data

Flow properties

Flow-rate at 3 bar

13.2 l/min

Technical properties

Hot water supply

max. +80°C

Working pressure

0.5-10 bar

Backflow prevention (EN1717)

EB

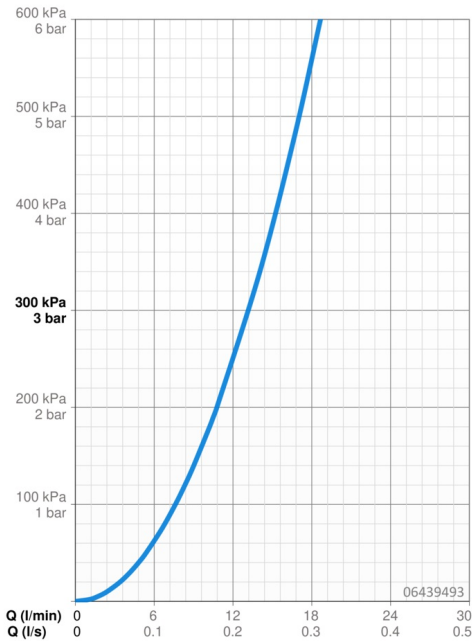
Material

Brass

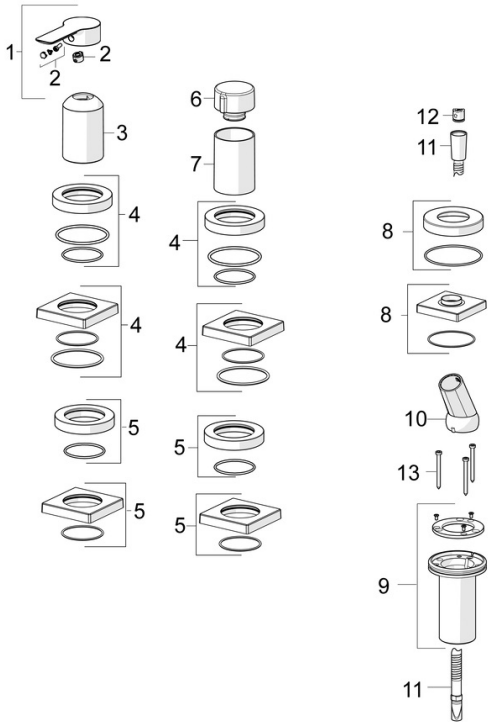
Regulations

EN standard

EN 817, EN 1112, EN 1113



Spare parts



SP06439473

	Name	Code
01	Lever	1004277V
02	Symbol plug	59914573
03	Cover sleeve	59914572
04	Cover plate, d 72 mm, for Compact	59914667
04	Cover flange, 75x75 mm	59914213
05	Cover plate, d 72 mm	59914668
05	Cover flange, 75x75 mm	59914214
06	Flow control handle	59914669
07	Cover sleeve	59914671
08	Cover flange, 75x75 mm	1003885V
08	Cover plate, d 72 mm	59914672
09	Passing-through bushing	59914673
10	Holder	59912282
11	Shower hose, L=1750, G1/2-M12x1	59912281
12	Non-return valve	59905714
13	Screw, M4x45	59912291