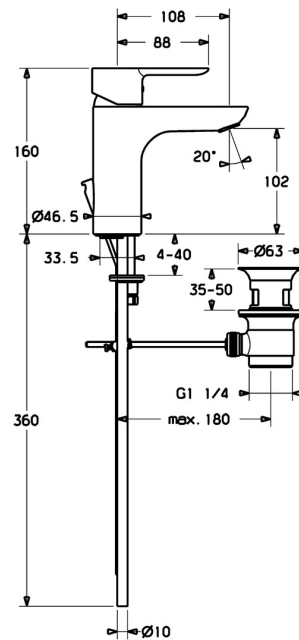
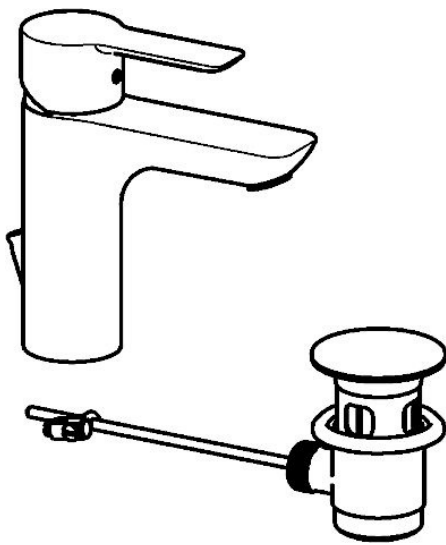


EAN: 4015474251908
static.hansa.com/06092103



- Washbasin
- Single-lever
- Deck mounted
- Chrome
- Fixed spout
- PCA® - constant flow rate regardless of pressure variations, Hidden aerator
- Hot/Cold symbols, Single operating lever/handle
- Pop-up waste with draw-rod
- Limitation option for maximum temperature and flow-rate, Adjustable hot water stop (included, retrofittable)
- Ø 35 mm ceramic cartridge for flow and temperature control
- Copper inlet pipes
- Inner body made of DZR brass, Rapid installation system



Technical data

Flow properties

| | |
|---|-----------|
| Flow-rate at 3 bar (with flow controller) | 6.0 l/min |
|---|-----------|

Technical properties

| | |
|------------------------------|------------|
| DN-size (nominal dimension) | DN15 |
| Hot water supply | max. +80°C |
| Working pressure | 0.5-10 bar |
| Connection size | Ø10 |
| Projection | 108 mm |
| Backflow prevention (EN1717) | AA |
| Material | Brass |

Regulations

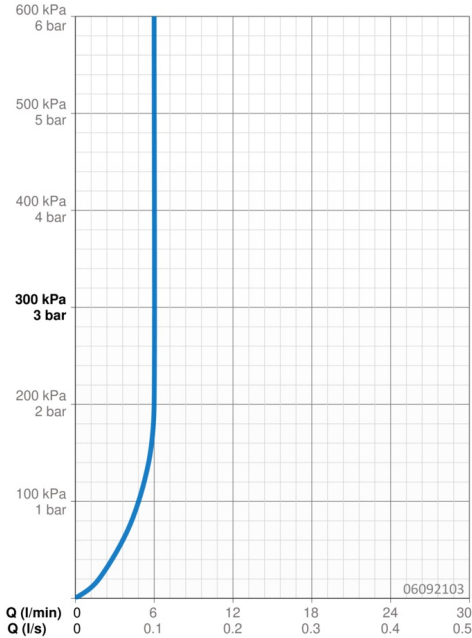
| | |
|-------------|--------------|
| EN standard | EN 817 |
| Noise class | I (ISO 3822) |

Approvals and Declarations

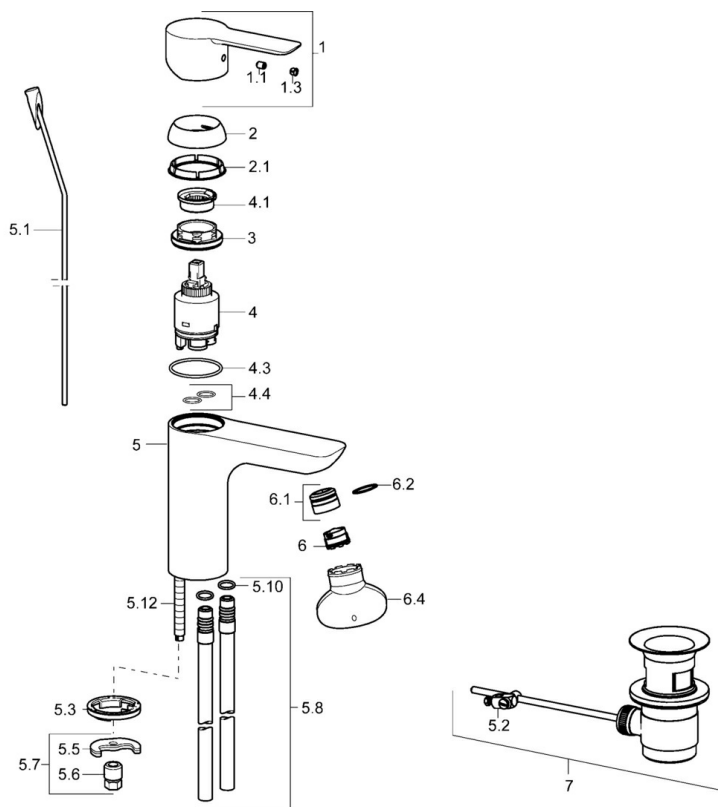
| | |
|------|----------------|
| DVGW | NW-6506CN0315 |
| ABP | PA-IX 38219/IO |
| EPD | S-P-06391 |

Sustainability

| | |
|-------------------------------|---------|
| EPD module A1 (kg CO2 eq.) | 9,31 |
| EPD module A2 (kg CO2 eq.) | 0,45 |
| EPD module A3 (kg CO2 eq.) | 0,88 |
| EPD module A1-A3 (kg CO2 eq.) | 10,64 |
| EPD module A4 (kg CO2 eq.) | 0,29 |
| EPD module B7 (kg CO2 eq.) | 1854,00 |
| EPD module C2 (kg CO2 eq.) | 0,02 |
| EPD module C3 (kg CO2 eq.) | 0,02 |
| EPD module C4 (kg CO2 eq.) | 0,08 |
| EPD module D (kg CO2 eq.) | -7,57 |



Spare parts



SP06092103

| | Name | Code |
|------|-----------------------------------|----------|
| 1 | Lever | 59913650 |
| 1.1 | Screw, M5x8, SW2.5 | 59904755 |
| 1.3 | Symbol plug Grey | 59912112 |
| 2 | Covering cap, 33x3 mm | 59912504 |
| 2.1 | Gasket, 45x35.5x5.4 | 59913651 |
| 3 | Tightening nut, M40x1 | 1003409V |
| 4 | Cartridge, 3.5 Eco | 59912324 |
| 4 | Cartridge, 3.5 Classic | 59913075 |
| 4.1 | Temperature adjustment limiter | 59912325 |
| 4.3 | O-ring, d 28.24x2.62 Discontinued | 59912590 |
| 4.4 | O-ring, d 10.10x1.60 Discontinued | 59905072 |
| 5.1 | Pop-up operating rod | 59913652 |
| 5.2 | Swivel joint | 59904624 |
| 5.3 | Bottom seal | 59914591 |
| 5.5 | Fixing plate | 59904765 |
| 5.6 | Screw, M8x1, SW13 | 59904766 |
| 5.7 | Fixing set | 59910749 |
| 5.8 | Coupling pipe, L=430, M10x1 | 59912550 |
| 5.10 | O-ring, 9x2 | 59905095 |
| 5.12 | Fixing screw, M8x1, L=140 | 59912474 |
| 6 | Aerator, M18.5x1, TJ | 59913366 |
| 6.1 | Fitting ring for aerator | 59913654 |
| 6.4 | Key for aerator, M18.5 | 59913367 |
| 7 | Pop-up waste | 59911441 |
| N.I. | Key, SW30/34 | 59912108 |