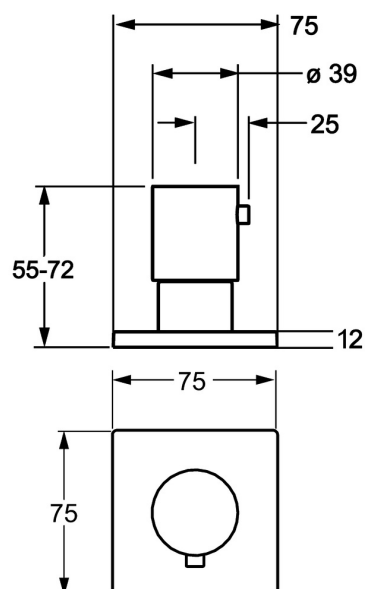
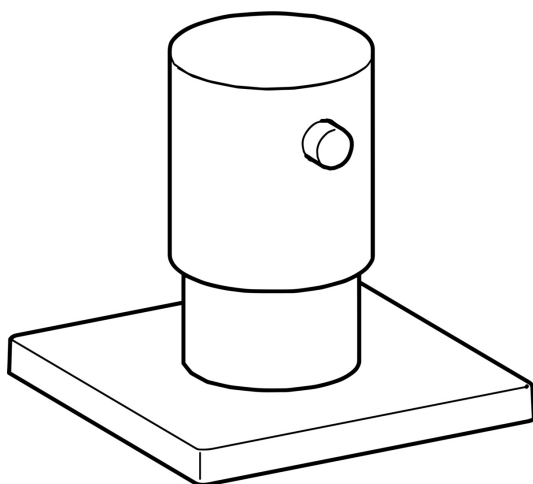


EAN: 4015474173118
static.hansa.com/02289172

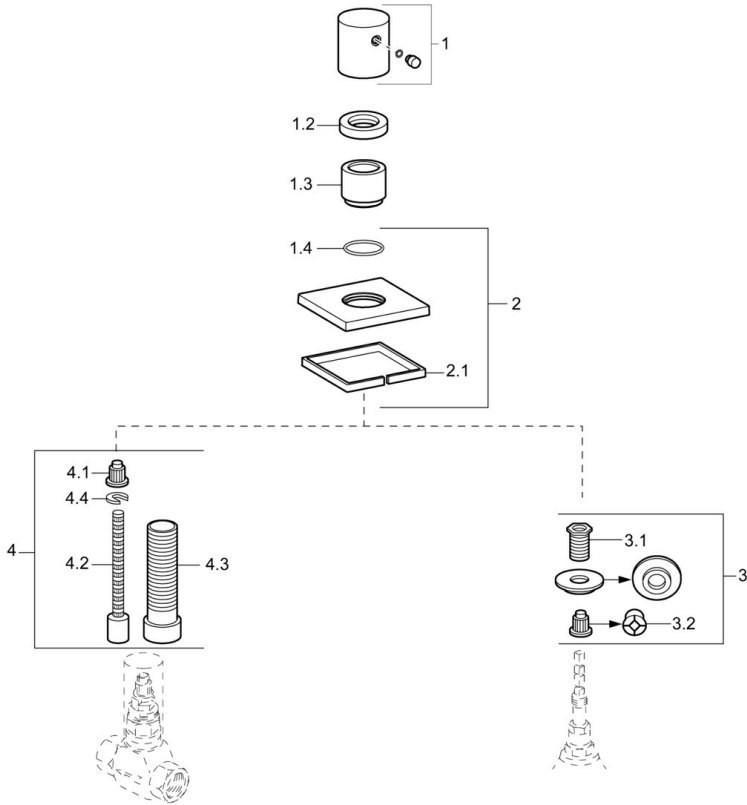


- Accessories
- Trim Kit
- Concealed wall mounting
- Chrome
- Flow control handle
- Square rosette
- suitable for concealed valves with ceramic or spindle head part



Technical data

Spare parts



SP02289172

	Name	Code
1	Handle	59913349
1.2	Tightening nut, d35.5xM24x1	59912023
1.3	Cover sleeve	59913434
1.4	O-ring, d 27x2	59901532
2	Cover flange, 75x75 mm	59913435
3	Adapter	59911033
3.1	Thread nipple, M12x1/M15x1, AF17	59902708
3.2	Adapter Blue	59911052
4	Raising kit, 80 mm	59910424
4.1	Adapter White	59910235
4.2	Inside spindle	59910379
4.3	Threaded sleeve, M24x1.5	59910100
4.4	Ring	59910694