

HANSAMEDICA

WASHBASIN FAUCET

01042176

EAN: 4015474076822



- Health & Care
- Single-lever
- Chrome
- Fixed spout
- Standard aerator
- Long shape, Hot/Cold symbols, Single operating lever/handle
- Chain holder with chain
- Limitation option for maximum temperature and flow-rate, Adjustable hot water stop (included, retrofittable)
- ø 48 mm ceramic eco cartridge for flow and temperature control
- Copper inlet pipes
- Waterways without nickel coating

Technical data

Technical properties

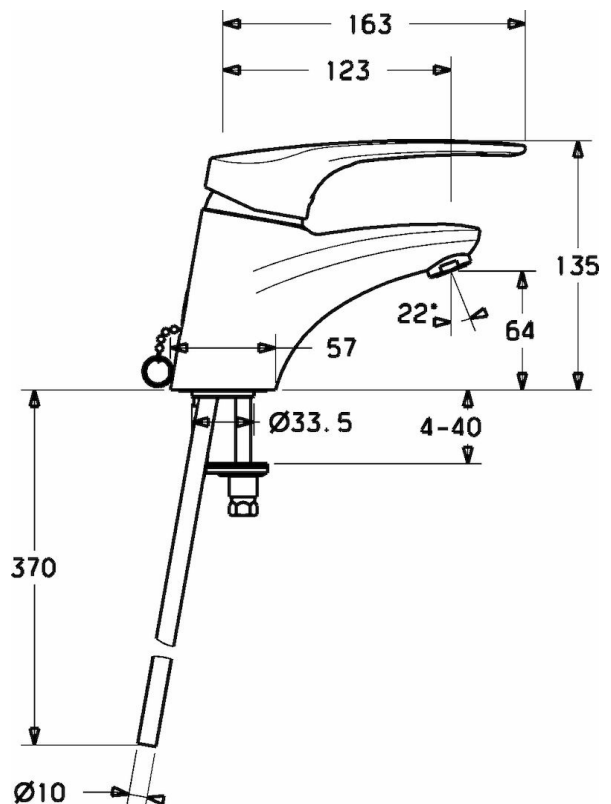
DN-size (nominal dimension)
Hot water supply
Working pressure
Connection size

DN15
max. +90°C
0.5-10 bar
Ø10

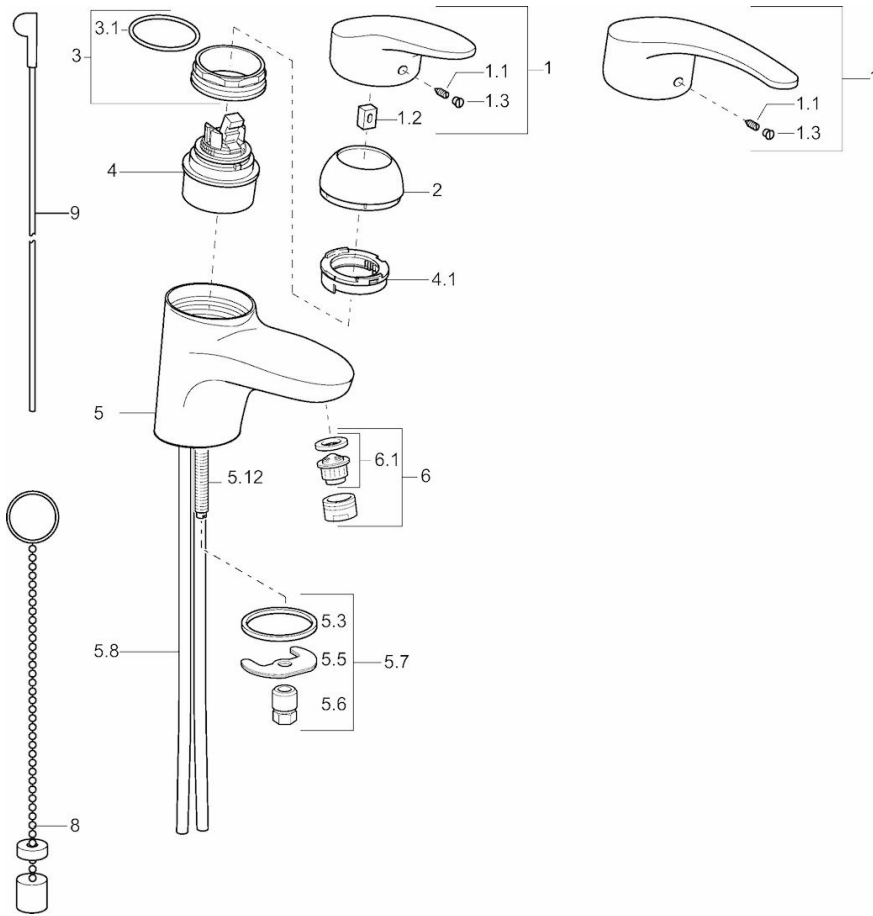
Regulations

EN standard

EN 817



Spare parts



SP01042173

Name	Code
1 Lever, L=87 mm	59914195
1 Lever, 138 mm	01880076
1.1 Screw, M5x8, SW2.5	59904755
1.2 Bushing	59904778
1.3 Symbol plug Grey	59912112
2 Covering cap	59912638
3 Eye screw, M50x1, SW45	59904775
3.1 O-ring, d 43x2.5	59911166
4 Cartridge, 4.8 eco	59904601
4.1 Adjusting ring	59904759
5.12 Fixing screw, M8x1, L=140	59912474
5.3 Gasket, 37x48x3.5	59911422
5.5 Fixing plate	59904765
5.6 Screw, M8x1, SW13	59904766
5.7 Fixing set	59910749
5.8 Installation coupling pair	59911791
6 Aerator, M24 x 1 STD HC A	59902366
6 Aerator, M24x1 (2011-)	59913739
6.1 Aerator, M22/24 A	59902081
8 Washer with chain holder	59902219
9 Pop-up operating rod	59912608
N.I. Installation kit	59913083