

EAN: 4015474564794
static.hansa.com/00968101



- Public
- Single-lever
- Wall mounted
- Chrome
- Fixed spout
- Standard aerator
- Single operating lever/handle
- Ceramic head part for flow control
- One inlet for cold or premixed water
- Flexible length / can be shortened

Technical data

Flow properties

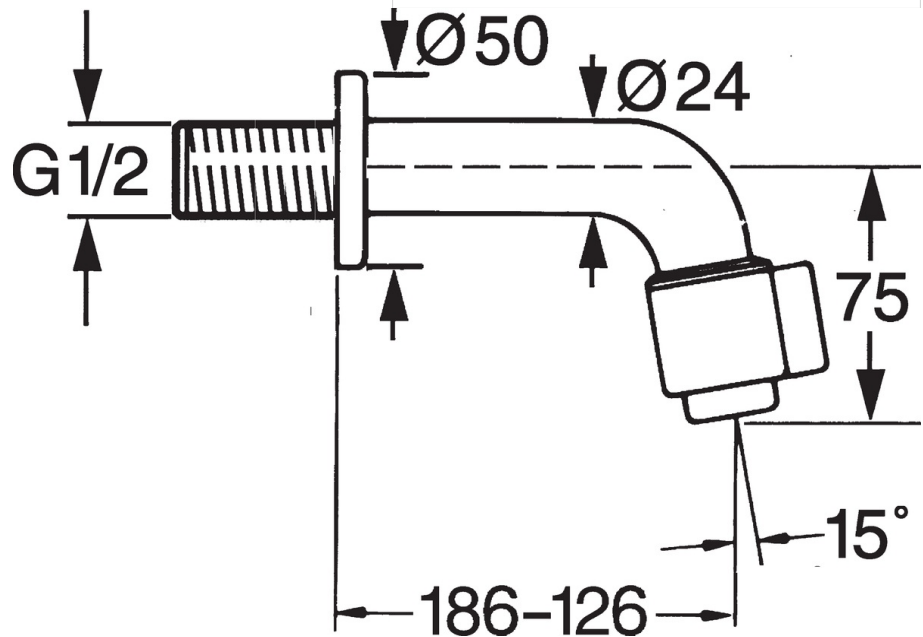
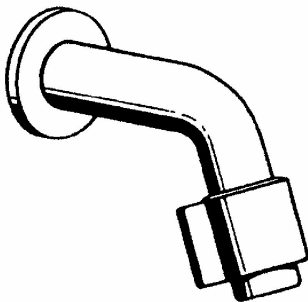
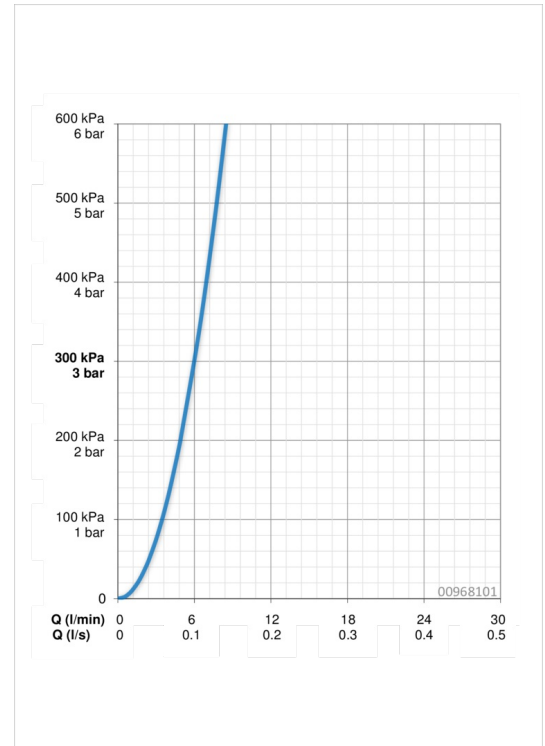
Flow-rate at 3 bar **6.0 l/min**

Technical properties

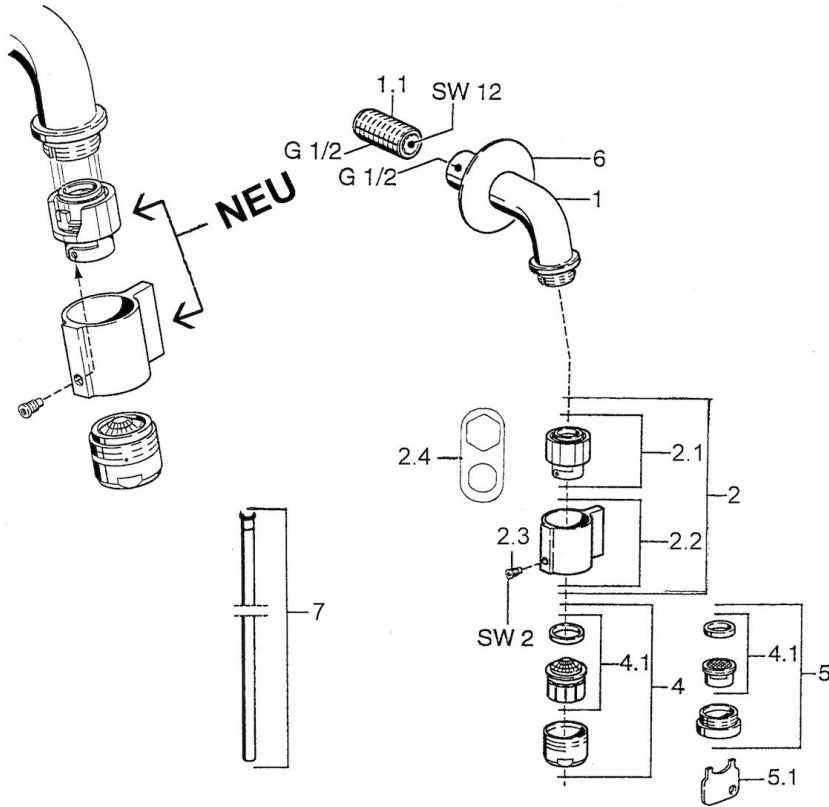
DN-size (nominal dimension) **DN15**
 Hot water supply **max. +90°C**
 Working pressure **0.5-10 bar**
 Connection size **G1/2**
 Projection **186 mm**

Regulations

EN standard **EN 817**



Spare parts



SP00868101

	Name	Code
1.1	Nipple	59905534
2	Headpart	59911780
2	Headpart White	59911775
2.1	Headpart	59911777
2.2	Lever	59911781
2.3	Fixing screw, M4	59911778
2.4	Tool	59912334
4	Aerator, M24x1 A White	59905419
4	Aerator, M24x1 Z	59906826
4.1	Aerator, M22/24, Z	59906830
5	Aerator, M24x1	59905721
5.1	Key for aerator	59905789
6	Covering cap	59905678
7	Coupling pipe	59910629